



LEPS Community News

- From the Principal's desk
- Community News
- Sport News
- Notes sent home
- School Policies— Birthday Celebration
- Attendance Matters
- Uniform Price List
- Dates to remember...

From the Principal's Desk

Dear Parents and Carers,

Welcome back to term 4. Our students have settled in well as we look forward to an exciting term. Over the school break the Cola had all panels replaced and some major works on the drainage system for all the demountables was completed. This term our footpath in front of the administration building will be upgraded and our school grounds are all getting a makeover in our garden beds. We are also looking to put to tender the new playground to replace the playground near the hall. When we are closer to the dates for this to commence we will keep you posted.



Term 4 Events

Our Year 4 to 6 students are going on the school camp and headed to Canberra this term. We also have a whole school concert where all students will be presenting their items they have been preparing. Our PSSA Basketball team plays on Fridays and Mr Diep will be sending messages to our parents and carers to come and watch and support our students. Healthy Harold is also making a visit to assist with student learning. The School Halloween Disco will be held during school time and we will also be celebrating the Diwali the Festival of Lights in our classrooms. There is much more happening this term and we will continue to celebrate our successes with you through our newsletters and teachers will share their teaching and learning fun through the ClassDojo app. We encourage you to stay informed and make contact with us if you have any questions by calling the front office on 9728 1278.

Big Childcare is open to support all our families as you work and manage your busy schedules. We encourage our families to use the facility to support you while you work and need to leave early or you finish late. The service is open from 6:30 am to 8:30 am where the students will have activities to participate in the hall and some food. The staff then walk the students over to the playground when teachers start their duty. In the afternoon the students are collected and taken to the hall for more fun activities and a snack, the service closes at 6 pm. BigChild care is also offering Holiday care. Please remember that you may be eligible for subsidy care, where the cost may be reduced to further support you. Please contact them directly on: 0428 776 507.

Monday 24 October to Friday 28 October	Children's Week
Thursday 27 October	Halloween Disco
Friday 28 October 2022	Teacher's Day
Monday 31 October to Wednesday 2 November	Canberra camp

Father's day morning tea



On Father's day, Mr Al-Saedi and Mrs Huynh prepared some lovely food and hot drinks for our parents who enjoyed sharing some eating time and conversations.

Our community liaisons officers take care of our parents' needs.

Come and join us every second Thursday on even weeks, and you're welcome to come and say hi anytime.



Lansvale East Public School

21 Riverside Rd, Lansvale East NSW 2166

Phone: (02) 9728 1278 Email: lansvalee-p.school@det.nsw.edu.au

Website: <http://www.lansvalee-p.schools.nsw.edu.au/>

LEPS Sports News

Zone Level

Congratulations to the following students representing our school in the Zone Athletics Carnival.

3-4T	4-5T	5-6K	1-3C
Joan Babkobau Manessa El Chafei Maya El Chfei Amelia Abdallah Alyssa Luu Tupou Tupou Daellius Maile Leo Pham	Joshua Phillips Lucinda Silva Sam Van Helaine Nguyen Unique Tu U Laisa Cagiloaloa Savaira Babakobau Stacey Langham-O'leary Reynan Lacra	Genevieve Nguyen Tiana Tu U Jaxon Evans Jaryd Vosota Khaled Abdallah Dajetikai Palelei Siteli Tuulakitau Safiya Gibbons Patrick Vu Ronaldo Sock Zachariah Solomona Riyaz Rafik Lexiiyus Key	Jonathan Giang

Regional Level

Further congratulations to the following Laisa Cagiloaloa who represented the Lansdowne Zone in the Regional Athletics in the 100M, 200M and 800M Races. Dajetikai Palelei and Jaryd Vosota who represented us in the Regional Shotput. Tiana Tu U for representing us in Regional Discus.

State Level

An amazing feat to Dajetikai Palelei who will be representing at state level for Shotput. We wish him the best of luck competing against students from other states!



Dear Parents/Carers,

Swimming lessons for Term 4 have been cancelled due to the shortage of transport, instead we will be having FUTBOLTEC come in on Fridays.

Thank you for your support

Mr Diep.



Outside of School Hours Care

WE ARE YOUR NEW ONSITE OSHC PROVIDER!



A BIG WELCOME

We are so excited to be partnering with Lansvale East Public School starting Wednesday June 1, and we cannot wait to meet you all!

We will be available to care for your child onsite before and after school. Enrol with us today and claim your FREE \$500 voucher via the Service NSW app to use at our service! This could get you approximately 60 FREE sessions with us depending on your circumstances!

For enquiries or expressions of interest, please contact us via phone or email or simply enrol online at bigchildcare.com/enrol

Centre Mobile 0428 776 507
Centre Email lansvaleeast@bigchildcare.com

	Operating Hours	Session Cost
Before School Care	6:30am to 8:30am	\$14.85
After School Care	2:45pm to 6:00pm	\$23.00
Holiday Care	6:30am to 6:00pm	\$50.00+
Staff Development Day	6:30am to 6:00pm	\$50.00

+ additional activity fee applies for excursions
 \$2 casual booking fee applies for non-permanent bookings



Child Care Subsidy (CCS)



Your cost of care may be reduced by up to 85% with CCS.

To find out if you are eligible, scan the QR code or call Services Australia on 13 61 50 between 9am and 5pm (local time) weekdays.



FOLLOW US!



Lansvale East Public School

21 Riverside Rd, Lansvale East NSW 2166

Phone: (02) 9728 1278 Email: lansvalee-p.school@det.nsw.edu.au

Website: <http://www.lansvalee-p.schools.nsw.edu.au/>

UPDATED MENU

Starting Monday 24 October 2022
Term 4 Week 3

SCHOOL (CANTEEN) MENU


MEALS AVAILABLE

MONDAY- Halal chicken tenders **\$5.00**
(with cucumber and carrot sticks)
Choice of fruit and drink

WEDNESDAY- Beef noodle stir fry **\$5.00**
Choice of fruit and drink

FRIDAY- Pasta meal (with or without cheese) **\$5.00**
Choice of fruit and drink

LANSVALE EAST PUBLIC SCHOOL email: lansvale-p.school@det.nsw.edu.au
 Riverside Road LANSVALE NSW 2166 web: www.lansvale-p.school@det.nsw.edu.au
 TEL- 9728 1278 FAX- 97282339



Monday, Wednesday and Friday RECESS ONLY

available for purchase will be

Jelly cups \$1.00
Custard \$1.00
Zoooper Dooper ice blocks \$1.00

Students can bring money directly to canteen and purchase.

All lunch meals will come with your choice of water, apple or orange juice and your choice of either an apple, pear or mandarin.

Please specify when ordering lunch:

Students Name-
Class-
Meal, Choice of drink and fruit

Monday-Chicken tenders with cucumber and carrot sticks
Choice of drink and fruit **\$5.00**

Wednesday-Beef noodle stir fry
Choice of drink and fruit **\$5.00**

Friday-Pasta with or without parmesan cheese
Choice of drink and fruit **\$5.00**

Orders to be handed in to classroom teachers and must be submitted to office by 9.30am.

SPECIAL NOTE- NO STUDENTS ARE TO BRING NOODLES TO CANTEEN OR OFFICE FOR BOILED WATER, THIS MUST BE PREPARED AT HOME READY FOR LUNCH. THIS IS A HEALTH AND SAFETY ISSUE.



Spooky Halloween Disco and Sausage Sizzle

Thursday 13 October 2022



Dear Parent/Caregiver,

On **Thursday 27 October 2022**, Lansvale East Public School is having a Spooky Halloween Disco during school hours. Students are encouraged to come to school in their creative Halloween costumes as they participate in a Spooky Disco. Students are able to order a delicious sausage sizzle meal deal as well as purchase ghostly snow cones during lunch and recess breaks.

Students can order a sausage meal deal for \$5.00. This includes a sausage on a roll and a drink. If students do not wish to purchase a meal deal, they are to bring their own lunch.

To help fundraise for the Year 6 Farewell, our Year 6 students will also be creating a Scary Space Room walk through, linking to their science unit of work. Children wishing to participate in the Scary Space Room will need to bring \$1 on the day.

Please return the below slip with \$5.00 by **Monday 24 October** if you would like your child to receive the meal deal.

Miss A. Droulias and Mr S. Diep
Event Organisers

Ms E.Ortega
Principal

----- (Please detach and return to school) -----

Spooky Halloween Disco Sausage Meal Deal

A sausage on a roll with your choice of sauce and a drink \$5.00

Name: _____ Class: _____

I would like to order _____ (quantity) Sausage Sizzle Meal Deals.

Choice of Sauce (please tick)

- Tomato Sauce
- BBQ Sauce
- No Sauce

Choice of Drink (please tick)

- Orange Juice Popper
- Apple Juice Popper
- Water

Parent / Caregiver
(signature)

Parent / Caregiver
(print name)

Date

PERMISSION NOTE MUST BE RETURNED BY MONDAY 24 OCTOBER 2022

LANSVALE EAST PUBLIC SCHOOL
RIVERSIDE ROAD LANSVALE NSW 2166
TEL: 9728 1278 FAX: 9728 2339
EMAIL: lansvalee-p.school@det.nsw.edu.au WEB: www.lansvalee-p.school@det.nsw.edu.au



Birthdays and Celebrations

Rationale:

Birthdays and celebrations are an important part of a child's life and there are many opportunities to celebrate these.

Lansvale East believes it is important to acknowledge and celebrate special milestones with their school community. Many families like to make a cake to bring to school on the day or invite children from the class to an outside party or get together. This policy provides clarity and consistency and promotes safety and inclusion for all members of our community when celebrating birthdays and other special occasions.

Aims:

- To ensure consistency of practice throughout the school when celebrating birthdays and special occasions.
- To promote healthy and responsible eating and inclusion for all members.
- To work in partnership with families when planning and celebrating birthdays.
- To take into account the variety of cultural, dietary and religious considerations within the class.

Implementation:

Lansvale East Public School's parents, students and staff will adhere to the following guidelines:

- When arriving to school, all parents require to sign in at the front office.
- Only cupcakes are to be brought in as knives are not permitted in classrooms.
- Lansvale East promotes the Department of Education Nutrition in Schools Policy.
- Birthdays are to be celebrated without foods high in fat, salt and sugar e.g no lolly bags, chips, soft drinks or toys. Cupcakes and fruit platters are acceptable.
- Parents/carers are to liaise with teachers beforehand to determine numbers, food allergies (if any), equipment required (serviettes etc) and an appropriate time for the celebration that does not disrupt learning time.
- A list of ingredients must be visible for office staff in order to identify students with allergies.
- Parents and staff should be mindful of families whose religion or beliefs don't celebrate birthdays.
- Parents organising a party outside of school should refrain from giving out invitations during school time, particularly if not all children are invited. It can lead to some children feeling excluded and cause unnecessary upsets. Parents need to discuss options with their child's teacher and distribute invitations after school to the parents or contact them privately.
- Candles are not permitted.
- Parents are to communicate a time with the teacher which does not disturb learning time.
- When departing, all parents require to sign out in the front office.

Evaluation:

This policy will be reviewed with whole staff, students, parents and the community as part of the school's three-year review cycle.

Developed by Ms E. Ortega, Mrs K. Ardle 17.10.2020 Updated: 16/05/2022

Why attendance matters



When your child misses school they miss important opportunities to:



Learn



Make friends



Build skills through fun

Days missed = years lost

A day here and there doesn't seem like much, but...

When your child misses just...

they miss weeks per year

and years over their school life



education.nsw.gov.au



Lansvale East Public School

21 Riverside Rd, Lansvale East NSW 2166

Phone: (02) 9728 1278 Email: lansvalee-p.school@det.nsw.edu.au

Website: <http://www.lansvalee-p.schools.nsw.edu.au/>

School Community Charter

 **Collaborative. Respectful. Communication.**

The following School Community Charter outlines the responsibilities of parents, carers, educators and school staff in NSW public schools to ensure our learning environments are collaborative, supportive and cohesive.

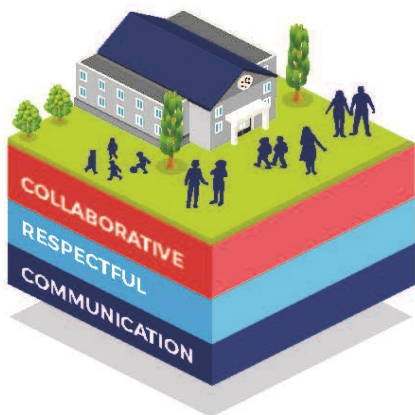
We treat
each other
with
respect

What our schools provide

NSW public schools work to create positive environments for students, staff and the entire school community that support student learning. We strive to ensure that every student is known, valued and cared for.

The best education happens when parents and schools work together.

The School Community Charter aligns with the NSW Department of Education Strategic Plan 2018 – 2022.



Positive environments

It is important that our NSW public schools are positive environments and that parents and carers are kept informed of students' progress and school announcements.

Parents and carers can expect:

- To be welcomed into our schools to work in partnership to promote student learning.
- Communication from school staff will be timely, polite and informative.
- Professional relationships with school staff are based on transparency, honesty and mutual respect.
- To be treated fairly. Tolerance and understanding are promoted as we respect diversity.

We
prioritise
the wellbeing
of all students
and staff

**Unsafe
behaviour**
is not acceptable
in our schools

We work
together
with the
school

Ensuring respectful learning environments for all members of NSW Public Schools communities.

© NSW Department of Education



We create
collaborative
learning
environments

We
all play
our part

We work
in partnership
to promote
student
learning

Communicating with our schools

Our staff will find a time to talk to you when they can give you their full attention. Please remember that while our staff are in class or dealing with other matters, they may not be available to answer your questions immediately.

Our schools and communities will make sure that written communication is appropriate, fair and easy to read. We encourage you to use email and social media appropriately to connect with your school and stay up-to-date with up-coming events in the school community.

Our guide for parents, carers and students provides useful information about the complaints process:

education.nsw.gov.au/about-us/rights-and-accountability/complaints-compliments-and-suggestions/guide-for-parents-carers-and-students

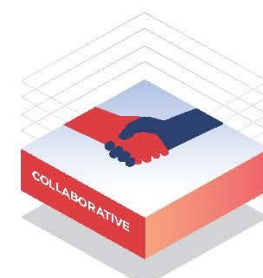
Respectful communication is a right

In all workplaces people have the right to feel respected. Unacceptable and offensive behaviour has no place in our school communities.

To ensure the wellbeing of students, staff and the community in our schools, steps will be taken to address unacceptable behaviour. This may include restricting contact with the school community or, in more serious cases, referral to NSW Police.

Unacceptable behaviour may include but is not limited to:

- Aggressive or intimidating actions, such as violence, threatening gestures or physical proximity.
- Aggressive or intimidating language, including the use of obscenities, making sexist, racist or derogatory comments or using a rude tone.
- Treating members of the school community differently due to aspects such as their religion or disability.
- Inappropriate and time wasting communication.



Collaborative.
Respectful.
Communication.

School Community Charter

education.nsw.gov.au

Lansvale East Public School

21 Riverside Rd, Lansvale East NSW 2166

Phone: (02) 9728 1278 **Email:** lansvalee-p.school@det.nsw.edu.au

Website: <http://www.lansvalee-p.schools.nsw.edu.au/>



UNIFORM ORDER FORM

Please indicate below the size and quantity of the items required and calculate the total.

Payments can be made by any of the following methods:

- Parent Online Payment (POP instructions on the back of this form)
- Correct cash in an envelope

Please send your completed order form to school with your child, alternatively please e-mail the form to

Lansvalee-p.school@det.nsw.edu.au

ITEM	COST	SIZE	QUANTITY	TOTAL
		4 6 8 10 12 14 16 M L		
School Dress	\$45:00			
Skort	\$20:00			
Short Sleeve Polo	\$25:00			
Long Sleeve Polo	\$30:00			
Shorts (Boys)	\$20:00			
Jacket	\$30:00			
Sports Shorts	\$20:00			
Sports Shirt	\$25:00			
Tracksuit	\$70:00			
Tracksuit Jacket	\$40:00			
Tracksuit Pants	\$30:00			
Hat/Cap	\$20:00			
Excursion Bag	\$15:00			
School Bag	\$35:00			
Library Bag	\$25:00			
			TOTAL	\$

Child's Name _____ Class _____ Date _____

Parent/Carer Name _____ Signature _____ Phone _____

Payment Method POP Payment Cash Credit Card

Visa Mastercard Card Number _____ / _____ / _____ / _____

Expiry _____ / _____ CCV _____

LANSVALE EAST PUBLIC SCHOOL
 RIVERSIDE ROAD LANSVALE NSW 2166
 TEL: 9728 1278 FAX: 9728 2339
 EMAIL: lansvalee-p.school@det.nsw.edu.au WEB: www.lansvalee-p.school@det.nsw.edu.au

Lansvale East Public School

21 Riverside Rd, Lansvale East NSW 2166

Phone: (02) 9728 1278 Email: lansvalee-p.school@det.nsw.edu.au

Website: <http://www.lansvalee-p.school@det.nsw.edu.au>



PARENT ONLINE PAYMENTS

Using Westpac QuickWeb

Dear Parents,

Online payments are accessed through the home page of the school's website:

www.lansvalee-p.school@det.nsw.edu.au

The school website will have an option on the menu bar "Make a Payment".

When you click on this you will be taken straight to the Westpac QuickWeb page.

Payers will complete the necessary details, some of which are mandatory before confirming the payment details and completing the payment. A receipt can be printed from the payment page.

The payment screens are:

- Entering payment details
- Entering credit card details
- Confirmation of payment details and
- Online payment receipt

Payments can be made by Visa or MasterCard credit or debit card only. The school does not see any details of your card.

Please ensure you enter the child's correct name, class and details of what you are paying for. These details are necessary so that the payment is credited to the correct child.

All payments made before 6.00pm each day will be received at the school the next day. Payment after 6.00pm will not be received by the school for two days.

LANSVALE EAST PUBLIC SCHOOL
RIVERSIDE ROAD LANSVALE NSW 2166
TEL: 9728 1278 FAX: 9728 2339
EMAIL: lansvalee-p.school@det.nsw.edu.au WEB: www.lansvalee-p.school@det.nsw.edu.au

Lansvale East Public School

21 Riverside Rd, Lansvale East NSW 2166

Phone: (02) 9728 1278 **Email:** lansvalee-p.school@det.nsw.edu.au

Website: <http://www.lansvalee-p.schools.nsw.edu.au/>