



LEPS Community News

- From the Principal's desk
- 1-3C News
- 2-4P News
- 3-4T News
- PBL News
- Notes sent home
- Attendance Matters
- Dates to remember...

From the Principal's Desk

Dear Parents and Carers,

Term 4 has definitely been busy for us all, we have celebrated Halloween, the Year 6 Peddler Stalls, Diwali, Teachers Day and now our year 4 to 6 students head off to camp this week. They will be visiting Canberra, the War Memorial, Parliament House, Reptile Zoo and much more. We look forward to hearing about their adventures in our next newsletter. We wish the staff and students a safe and enjoyable trip.



2023 Enrolments

If your child is of school starting age, children can start Kindergarten at the beginning of the school year if they turn 5, on or before 31 July of that year. By law, all children must be in compulsory schooling by their 6th birthday. Please enrol them by visiting the school website and following the links.

<https://lansvalee-p.schools.nsw.gov.au/>
<https://lansvalee-p.schools.nsw.gov.au/about-our-school/enrolment.html>

Term 4 Updates

Term 4 is a busy time with many things happening for the students, teachers, parents and carers. Please remember to check the School App: ClassDojo, Facebook, the school's website and your child's bag (on Thursdays) for information regarding school events!

The last day of school for students for 2022 is **Friday 16 December, 2022**. Monday 19 and Tuesday 20 December are School Development Days, only staff will be at school for professional learning.

If you are taking leave please remember to complete the leave forms. Contact the front office for more information on 9728 1278.

Have a great week.

Monday 31 October to Wednesday 2 November	Years 4-6 Overnight Canberra Camp
Thursday 3 November	Whole School Assembly
Thursday 3 November	Kindergarten Orientation
Thursday 3 November	Grandparents Day

ENGLISH

We followed our own procedures and made fairy bread. We had so much fun and it was delicious!



MATHS

Ordering objects from heaviest to lightest.



Practising spelling in Sound Waves!



We love it when Lenny and Sade come to visit us!





2-4P

GREAT LEARNING!



Be Respectful Be Responsible Be Resilient

Students using Google maps to find the place they live



Students are writing words beginning, middle or ending with the focus phoneme 'i'



Students demonstrating great use of IT skills to make their own 'ice creams'

Students had fun making objects related to the focus grapheme 'i'



Students are engaged in finding the weight of different objects





3-4T Classroom News



Being Responsible, Respectful and Resilient Learners



In 3-4T, we are working on incorporating the PBL rules of being responsible, respectful and resilient across all learning areas and on the playground.

In Geography, we are learning about the Earth's Environment and ways we can take care of our environment.



In English, we are learning about informative writing. We are looking at different types of informative texts and working towards creating our own.



In Mathematics, we are learning about collecting data and putting our data into graphs.





PBL NEWS

Be Respectful, Be Responsible, Be Resilient

2-4P



Students being great learners

PBL FOCUS

The PBL focus for Week 2 is "Classroom Rules" and the focus for Week 3 is "Playground Rules".

Reminders for students at home

- Have reduced hours of screen time
- Engage in physical activities like cycling, running, jumping on the trampoline
- Wash your hands with soap after using the toilet
- Use toilet paper sparingly
- Help tidy up around the house

Reflections

PBL Reflections are sessions during lunchtime for students who have not followed the school's PBL rules to attend and think about what they can do differently to be better school citizens. Students who are repeatedly sent to Reflection will lose privileges that include not being invited to the Green Event at the end of the school term.

Award Winners



Students receiving merit and bronze awards.

LEPS WELLBEING SCHOOL SUPPORT DOGS

VISITING CLASSROOMS



5-6S class and Lenny
Say cheese!
After a hard work in
class. Well done
everyone!!



Sade listening
attentively while Mr
Diep is reading a book
to **1-3C class**.



Lenny coming to
sing in Morning Circle
in **2-4P Class**.



We have had a visitor at our school
this week.

It may appear friendly but as we are
not certain we ask for students to
please keep their distance.

Please speak to your children about
not approaching the bird and letting it
return back to its home.

Thank you for your support.



Thursday, 20 October 2022

FUTBALTEC – Football program

Dear Parents and Caregivers,

In Term 4 we will be running a Football/Soccer program delivered by qualified coaches from FUTBALTEC.

The lessons will run for 40 minutes each week on Fridays over 9 weeks, **commencing on Friday, 21 October 2022 and conclude on Friday, 9 December 2022**. The lessons will enhance, develop and build skills in goal scoring, possession of the ball, team building, working collaboratively in a team and developing positive sportsmanship.

The total cost of the program is \$46. The school will cover a percentage of the cost to assist families. This will result in the cost of the program being reduced to a subsidised rate of \$20.

You have the choice of paying in instalments of \$5 or \$10 until the full amount is paid, or you may pay full, in a single payment.

These lessons are an important part of the Physical Education, Health and Personal Development syllabus and all students are expected to participate.

Students will need to wear comfortable running shoes for the activity.

Please return this form with first instalment to the office by Friday 28 October 2022.

Mr S. Diep, Miss A. Droulias
Sports Co-ordinators

Ms E. Ortega
Principal



FUTBALTEC – Football program

I give permission for my child _____ of class _____ to participate in the FUTBALTEC program.

I have enclosed \$20.00 to cover the cost of the FUTBALTEC program.

I will pay by instalments of \$ _____, the first instalment due by Friday 28 October 2022, the second instalment due by Thursday 17 November and the final amount owing to be paid

My child has mild/moderate/severe asthma. Online Payment Receipt no: _____

Medical conditions

Parent/Carer (print name)

Parent/Carer (Signature)

Date

PERMISSION NOTE MUST BE RETURNED TO CLASS TEACHERS BY FRIDAY 28 OCTOBER 2022.

LANSVALE EAST PUBLIC SCHOOL
RIVERSIDE ROAD LANSVALE NSW 2166
TEL: 9728 1278 FAX: 9728 2339

EMAIL: lansvalee-p.school@det.nsw.edu.au WEB: www.lansvalee-p.school@det.nsw.edu.au



Thursday, 20 October 2022

Term 4 Extra-Curricular Activities

Dear Parents and Caregivers,

In Term 4 this year, students at Lansvale East Public School will be offered the opportunity to participate in extra-curricular activities. These activities will be run by Teachers, School Learning Support Officers and FUTBOLTEC.

Pick up will only be from the gate at Hollywood Drive.

The cost for all extra-curricular activities is **\$30.00** for the term which works out to be **\$3.75** per week! Activities will take place on Thursdays from 3pm-4pm (weeks 3-10). Spots in these programs are limited and priority will be given to families who return the permission note first. The funds go towards resources for activities.

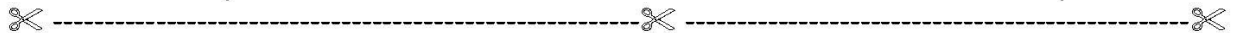
<i>Extra-Curricular Activity</i>	<i>Maximum Student No.</i>	<i>Eligible Students</i>
Art with Ms Kingsnorth	10 (K-2) and 10 (3-6)	Years K-6
Basketball/Sports 3-6 with Mr Diep	15(3-6)	Years 3-6
STEAM (Sphero) with Mr Khoo	10	Years 3-6
FUTBOLTEC (Soccer)	15 students K-2 15 students 3-6	K-6

Please note that siblings or other person(s) who have not registered/paid for these activities **will not be permitted** to participate or wait in/near the activity locations. This is a *Duty of Care* and *Public Liability* issue which must be followed. We thank you for your support.

Regards,

Mr S. Diep
Rel/ Assistant Principal

Ms E. Ortega
Principal



PERMISSION NOTE: EXTRA-CURRICULAR ACTIVITIES

I give permission for my child _____ from class _____ to take part in the following activity: *(circle chosen activity)*

Art	3-6 Sport Basketball	Steam - Sphero	FUTBOLTEC
-----	----------------------	----------------	-----------

How my child will go home: *(please tick one option)*

I will pick up my child at 4pm to walk home

I give permission for my child

I understand that alternative arrangements may be made in the case of adverse weather.

I have read and understood this note and have included **\$30.00** with this permission slip.

Parent/Carer (print name)

Parent/Carer (signature)

Contact Number

Date

Online payment receipt no: _____

LANSVALE EAST PUBLIC SCHOOL
RIVERSIDE ROAD LANSVALE NSW 2166
TEL: 9728 1278 FAX: 9728 2339
EMAIL: lansvalee-p.school@det.nsw.edu.au WEB: www.lansvalee-p.school@det.nsw.edu.au

UPDATED MENU
Starting Monday 24 October 2022
Term 4 Week 3

SCHOOL CANTEEN MENU

MEALS AVAILABLE

MONDAY- Halal chicken tenders **\$5.00**
(with cucumber and carrot sticks)
Choice of fruit and drink


WEDNESDAY- Beef noodle stir fry **\$5.00**
Choice of fruit and drink

FRIDAY- Pasta meal (with or without cheese) **\$5.00**
Choice of fruit and drink

LANSVALE EAST PUBLIC SCHOOL
Riverside Road LANSVALE NSW 2166
TEL- 9728 1278 FAX- 97282339

email: lansvale-p.school@det.nsw.edu.au
web: www.lansvale-p.school@det.nsw.edu.au

Monday, Wednesday and Friday RECESS ONLY



available for purchase will be

Jelly cups \$1.00
Custard \$1.00
Zoooper Dooper ice blocks \$1.00

Students can bring money directly to canteen and purchase.

All lunch meals will come with your choice of water, apple or orange juice and your choice of either an apple, pear or mandarin.

Please specify when ordering lunch:

Students Name-
Class-
Meal, Choice of drink and fruit

Monday-Chicken tenders with cucumber and carrot sticks
Choice of drink and fruit **\$5.00**

Wednesday-Beef noodle stir fry
Choice of drink and fruit **\$5.00**

Friday-Pasta with or without parmesan cheese
Choice of drink and fruit **\$5.00**

Orders to be handed in to classroom teachers and must be submitted to office by 9.30am.

SPECIAL NOTE- NO STUDENTS ARE TO BRING NOODLES TO CANTEEN OR OFFICE FOR BOILED WATER, THIS MUST BE PREPARED AT HOME READY FOR LUNCH. THIS IS A HEALTH AND SAFETY ISSUE.

School Community Charter

 **Collaborative. Respectful. Communication.**

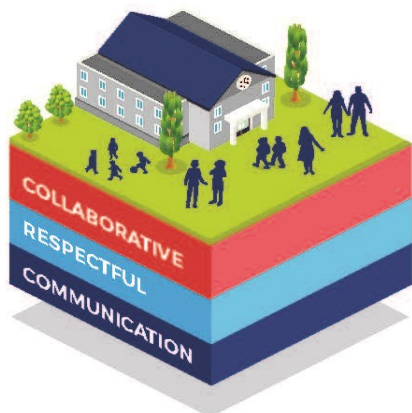
The following School Community Charter outlines the responsibilities of parents, carers, educators and school staff in NSW public schools to ensure our learning environments are collaborative, supportive and cohesive.

What our schools provide

NSW public schools work to create positive environments for students, staff and the entire school community that support student learning. We strive to ensure that every student is known, valued and cared for.

The best education happens when parents and schools work together.

The School Community Charter aligns with the NSW Department of Education Strategic Plan 2018 – 2022.



Positive environments

It is important that our NSW public schools are positive environments and that parents and carers are kept informed of students' progress and school announcements.

Parents and carers can expect:

- To be welcomed into our schools to work in partnership to promote student learning.
- Communication from school staff will be timely, polite and informative.
- Professional relationships with school staff are based on transparency, honesty and mutual respect.
- To be treated fairly. Tolerance and understanding are promoted as we respect diversity.

Ensuring respectful learning environments for all members of NSW Public Schools communities.

We treat each other with **respect**

We **prioritise the wellbeing** of all students and staff

Unsafe behaviour is not acceptable in our schools

We work **together** with the school



We create
collaborative
learning
environments

We
all play
our part

We work
in partnership
to promote
student
learning

Communicating with our schools

Our staff will find a time to talk to you when they can give you their full attention. Please remember that while our staff are in class or dealing with other matters, they may not be available to answer your questions immediately.

Our schools and communities will make sure that written communication is appropriate, fair and easy to read. We encourage you to use email and social media appropriately to connect with your school and stay up-to-date with up-coming events in the school community.

Our guide for parents, carers and students provides useful information about the complaints process:

education.nsw.gov.au/about-us/rights-and-accountability/complaints-compliments-and-suggestions/guide-for-parents-carers-and-students

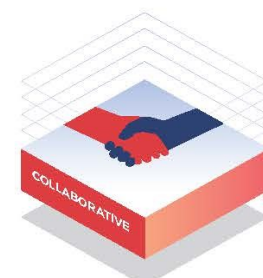
Respectful communication is a right

In all workplaces people have the right to feel respected. Unacceptable and offensive behaviour has no place in our school communities.

To ensure the wellbeing of students, staff and the community in our schools, steps will be taken to address unacceptable behaviour. This may include restricting contact with the school community or, in more serious cases, referral to NSW Police.

Unacceptable behaviour may include but is not limited to:

- Aggressive or intimidating actions, such as violence, threatening gestures or physical proximity.
- Aggressive or intimidating language, including the use of obscenities, making sexist, racist or derogatory comments or using a rude tone.
- Treating members of the school community differently due to aspects such as their religion or disability.
- Inappropriate and time wasting communication.



Collaborative.
Respectful.
Communication.

School Community Charter

education.nsw.gov.au

Lansvale East Public School

21 Riverside Rd, Lansvale East NSW 2166

Phone: (02) 9728 1278 **Email:** lansvalee-p.school@det.nsw.edu.au

Website: <http://www.lansvalee-p.schools.nsw.edu.au/>



UNIFORM ORDER FORM

Please indicate below the size and quantity of the items required and calculate the total.

Payments can be made by any of the following methods:

- Parent Online Payment (POP instructions on the back of this form)
- Correct cash in an envelope

Please send your completed order form to school with your child, alternatively please e-mail the form to

Lansvalee-p.school@det.nsw.edu.au

ITEM	COST	SIZE	QUANTITY	TOTAL
		4 6 8 10 12 14 16 M L		
School Dress	\$45:00			
Skort	\$20:00			
Short Sleeve Polo	\$25:00			
Long Sleeve Polo	\$30:00			
Shorts (Boys)	\$20:00			
Jacket	\$30:00			
Sports Shorts	\$20:00			
Sports Shirt	\$25:00			
Tracksuit	\$70:00			
Tracksuit Jacket	\$40:00			
Tracksuit Pants	\$30:00			
Hat/Cap	\$20:00			
Excursion Bag	\$15:00			
School Bag	\$35:00			
Library Bag	\$25:00			
			TOTAL	\$

Child's Name _____ Class _____ Date _____

Parent/Carer Name _____ Signature _____ Phone _____

Payment Method POP Payment Cash Credit Card

Visa Mastercard Card Number _____ / _____ / _____ / _____

Expiry _____ / _____ CCV _____

LANSVALE EAST PUBLIC SCHOOL
 RIVERSIDE ROAD LANSVALE NSW 2166
 TEL: 9728 1278 FAX: 9728 2339
 EMAIL: lansvalee-p.school@det.nsw.edu.au WEB: www.lansvalee-p.school@det.nsw.edu.au

Lansvale East Public School

21 Riverside Rd, Lansvale East NSW 2166

Phone: (02) 9728 1278 Email: lansvalee-p.school@det.nsw.edu.au

Website: <http://www.lansvalee-p.school@det.nsw.edu.au/>



PARENT ONLINE PAYMENTS

Using Westpac QuickWeb

Dear Parents,

Online payments are accessed through the home page of the school's website:

www.lansvalee-p.school@det.nsw.edu.au

The school website will have an option on the menu bar "Make a Payment".

When you click on this you will be taken straight to the Westpac QuickWeb page.

Payers will complete the necessary details, some of which are mandatory before confirming the payment details and completing the payment. A receipt can be printed from the payment page.

The payment screens are:

- Entering payment details
- Entering credit card details
- Confirmation of payment details and
- Online payment receipt

Payments can be made by Visa or MasterCard credit or debit card only. The school does not see any details of your card.

Please ensure you enter the child's correct name, class and details of what you are paying for. These details are necessary so that the payment is credited to the correct child.

All payments made before 6.00pm each day will be received at the school the next day. Payment after 6.00pm will not be received by the school for two days.

LANSVALE EAST PUBLIC SCHOOL
RIVERSIDE ROAD LANSVALE NSW 2166
TEL: 9728 1278 FAX: 9728 2339
EMAIL: lansvalee-p.school@det.nsw.edu.au WEB: www.lansvalee-p.school@det.nsw.edu.au

Lansvale East Public School

21 Riverside Rd, Lansvale East NSW 2166

Phone: (02) 9728 1278 **Email:** lansvalee-p.school@det.nsw.edu.au

Website: <http://www.lansvalee-p.schools.nsw.edu.au/>