



LEPS Community News

- From the Principal's desk
- K-3A News
- K-1-2DT News
- PBL News
- School Concert - Music through Time 2022
- Health & Wellbeing
- Attendance Matters
- Uniform Price List
- Dates to remember...

From the Principal's Desk

Dear Parents and Carers,

I extend my deepest gratitude to all our families and extended families in attending our 2022 Music through Time Concert. It was an amazing event to see so much support. Our students did an amazing job and with the support of all the staff the show would not have been such a great success. Thank you for your support, we had over 300 in attendance and we were able to raise just over \$3000 for the year 6 Farewell Dinner.

It certainly was a busy week with the concert and the year 6 dinner. This was also a wonderful celebration of our year 6 students in their last year of primary school. Congratulations to all the students and we wish them all the best as they enter into high school. We thank our families that are leaving us this year and wish you all the very best of health and happiness.

On **Tuesday 13 December** we have our annual school presentation day ceremony. Two separate assemblies will be held at the following times:

Time: 9:30am: Year 3-6 classes: 2-4P, 3-4T, 4-5T, 4-5E, 5-6S, 5Z and 5-6K

Time: 12:00pm: K-2 classes attending: K-3A, 1-3C, K-1-2DT

We hope to see all our families attend each of their child's respective presentation day time schedule. If you have any questions please contact the front office on 9728 1278.

As part of our end-of-year celebrations, we have organised a Water Fun Day for students at school on: Thursday 15 December between 12:00pm - 1:00pm. This event will celebrate our student successes during 2022. Students are asked to wear green clothing for the day. Please see the note attached to this newsletter for further information.

Have a great week.



**Tuesday
13
December**

**Presentation
Day**

**Year 3-6
(at 9:30 am)**

**Year K-2
(at 12 pm)**

**Friday
16
December**

**End of
Term 4, 2022**



Water Fun Day

Friday 9 December 2022

Dear Parents and Caregivers,

As part of our end-of-year celebrations, Lansvale East Public School has organised a **Water Fun Day** for students. The Term 4 PBL Green Event will be incorporated into this event. Students are asked to wear green clothing for the day. The Water Fun day at school and will take place on:

Thursday 15 December between 12:00pm - 1:00pm

This event will celebrate our student successes during 2022. Students will participate in water based games and activities that may include slip and slides, target sponge toss, hit the target, water balloons, water obstacle course and water bubble challenge.

There will be no activities where the students will be submerged in water or required to swim. Students will change into their dry clothes before returning home. You may choose for your child to participate in alternate dry activities by ticking the box in the consent form below.

To ensure that all students enjoy the Water Fun Day, the following additional attire will be needed:

Please bring an EXTRA (for the WET activities):

- T-shirt (NO singlets NO inappropriate slogans)
- Shorts or board shorts
- Underwear
- Closed toe shoes

Students should also bring a **hat, towel and a plastic bag for wet items**. Please ensure that all items are **clearly marked with the student name** to prevent lost or misplaced items.

Students will be engaged in activities under the sun, so it is important to make sure that they have **hats and sunscreen**. Parents and carers are asked to please supply sunscreen for their children to apply at school.

If you have any questions please contact the school office on 9728 1278.

Staff members with emergency care and CPR training are accompanying the students. A risk assessment of this activity has been undertaken and all necessary actions have been approved by the Principal

Mrs S. Pinto
PBL Coordinator



----- Please detach and return by: **9:00am Wednesday 14 December 2022** -----



Consent Form - Water Fun Day

Student Name: _____ (Please print) Class: _____

☐ I provide consent for my child to participate in the **Water Fun Day** activities.

☐ I would like my child to participate in alternate dry activities.

My child has the following additional needs (*Please specify*):

Parent/Carer Name (please print): _____ Parent/Caregiver Signature: _____

Mobile contact no.: _____ Date: _____

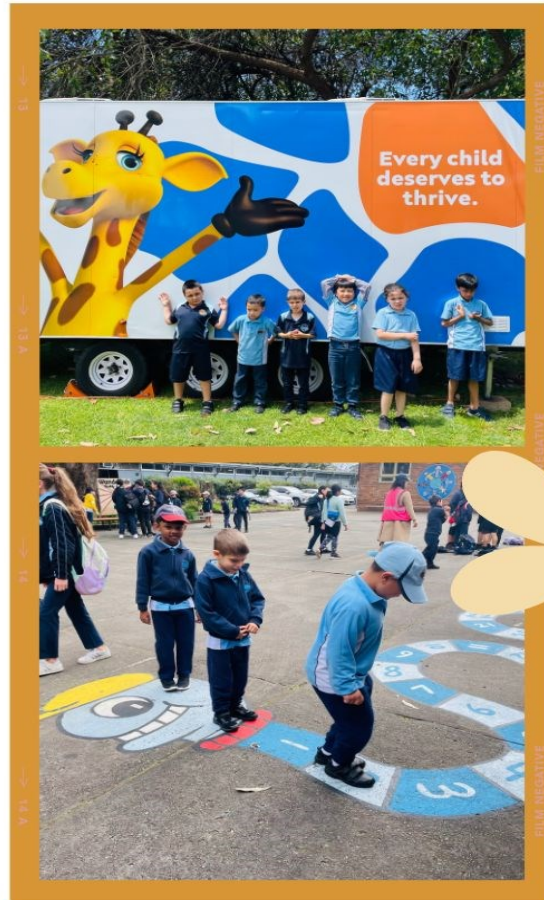
PERMISSION NOTE MUST BE RETURNED BY 9:00am WEDNESDAY 14 DECEMBER 2022

LANSVALE EAST PUBLIC
SCHOOL RIVERSIDE ROAD
LANSVALE NSW 2166
TEL: 9728 1278 FAX: 9728 2339
EMAIL: lansvalee-p.school@det.nsw.edu.au WEB: www.lansvalee-p.school@det.nsw.edu.au

K-3 A

Our Amazing work this Term

This term K-3A have been exploring various learning concepts through the use of hands on learning experiences. We have learnt to tell time to the minute, make new friends using our words, exploring the weekly sound and engaged in CAPA rotations each week focusing on sport, dance and art. We also enjoyed our visit from Healthy Harold.



K-1-2DT DANCES THROUGH TIME

YOU'RE WELCOME

K-1DT & K-3A

K-1DT and K-3A's dance routine was inspired by one of the most well-known songs from the Disney Film 'Moana'. The students worked extremely hard to express the characters' emotions through strong movements and facial expressions.



SHAKE YOUR TAIL FEATHER

2DT & 1-3C

2DT and 1-3C travelled back to the 1960 to celebrate the popularity of pop and rock genre combined. Their routine made references to a number of dance styles/moves including the Boogaloo, The Twist, The fly, The Bird, Monkey, the Mashed Potato, the duck and the Watusi.



Lansvale East Public School

21 Riverside Rd, Lansvale East NSW 2166

Phone: (02) 9728 1278 Email: lansvalee-p.school@det.nsw.edu.au

Website: <http://www.lansvalee-p.schools.nsw.edu.au/>



School Attendance



Please be reminded ...

It is important to arrive on time and attend the full day of school.

A couple of minutes here and there doesn't seem like much, but...

when your child misses just...

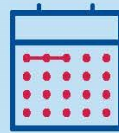
they miss days per year

5 mins
per day

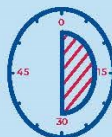


=

3 days



30 mins
per day



=

18 days



Patterns of lateness
can have a serious
impact on your child's
education.

education.nsw.gov.au

... and it is essential to maintain regular attendance at school:

Days missed = years lost

A day here and there doesn't seem like much, but...

When your child misses just...

they miss weeks per year

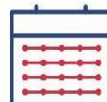
and years over their school life

1 day per **fortnight**



=

4 weeks



=

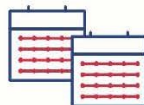
Over **1** year missed

1 day per **week**



=

8 weeks



=

Over **2.5** years missed

education.nsw.gov.au

Upright ♦ Steadfast ♦ True



LEPS PBL Gotcha Awards

The *Positive Behaviour for Learning* (PBL) 'Gotcha Awards' are presented to students who follow the PBL Playground Rules in being **Responsible**, **Respectful** and **Resilient**.

The Gotcha Award Recipients for **Term 4 Week 8, 2022** are:

Award Recipients	For being Responsible	For being Respectful	For being Resilient
	Laisa Cagiloaloe 4-5E Troy Vu 4-5T	Lucas Pham K-1-2DT Jaryd Vosota 5-6K	Alecia Luong 1-3C Aleksej Zabrdac K-3A

PBL Gotcha Award Recipients for Term 4 Week 8, 2022



LEPS WELLBEING SCHOOL SUPPORT DOGS

VISITING CLASSROOMS



After a hard work in class **Safi** and **Genevieve** from **5-6K** are taking Lenny for a nice walk.



Aleksej from **K-3A** having a quality time with **Sade**



Ziggy in training is making new friends in **K-12DT** and **3-4T Class** .



Lenny helping **5-6S** students to listen to the teacher in learning time .



Trung and **Max** are ready to have some fun with **Sade** in sports.



Vision

The vision of the dog is different to that of humans. They can see colour, in particular those within the blue and yellow portion of the light spectrum but are incapable of distinguishing reds and oranges. They see static shapes in less detail than humans but are very sensitive to moving objects and can see a waving hand up to a kilometre away. Dogs are very sensitive to sudden or unusual movement, an asset made use of in guide dogs, retrievers and hunting dogs.

In general dogs have panoramic field of vision is 250-270° but binocular vision varies greatly in different breeds according to how far their eyes are set in the front of their head. It has been shown that their peripheral vision is affected by the shape of their skull. Dogs have much better night vision than humans.

Smell

Smell is the dog's predominant sense, having 44 times more scent receptors than humans. This facilitates the ability for dogs to be trained for a variety of tasks, selecting objects or finding humans.

Hearing

Dogs have highly developed hearing and can hear high notes that the human ear cannot detect. They hear notes of much higher frequency than humans, giving them the ability to detect the calls of many small mammals, such as mice and bats, and allowing them to be successful hunters.

2022 Music through Time



OUR SCHOOL PROGRAMS



NUTRITION NSW

Nutrition NSW (NNSW) is a non profit, non government, community-based organisation and charity aimed to inspire and empower healthy eating for all Australians, and be the leading nutrition advocate in preventative health.

Supported by NSW Health we offer expertise in: Dietetics, Public Health Nutrition, Health Promotion, Education, Science, Medicine and Sports and Recreation. We pride ourselves on delivering the latest scientific evidence-based nutritional research, news and trends and conveying it to the general public.

OUR PROGRAMS

Nutrition
Presentations



Cooking
Demonstrations



Health Displays



Canteen Menu
Assessment



Lunchbox Ideas



Family Nutrition
Consultations



Our programs are delivered qualified Nutrition NSW Dietitian/Nutritionist specifically designed and targeted to your students and/or parents.

Marketing material for promoting the event can be provided, along with Nutrition handouts and resources provided to all participants.

What topics are covered?

Nutrition NSW services tailored messages to the targeted age group. Some topics include:

- Nutrition Guidelines for children & teenagers
- Healthy, practical snack and lunch ideas
- Suitable drinks for children
- Making healthy eating fun and how to handle fussy eating
- Food allergies and intolerances
- Food safety
- The importance of role modelling
- The importance of food when studying



Reclaim the Lunchbox Workshop

Delivered by one of our accredited Dietitians/ Nutritionists with experience in childhood nutrition - this interactive education session offers a an overview of some key nutritional issues and concerns in young children.

The workshop includes a presentation and cooking demonstration of healthy and quick lunchbox recipes.

The Reclaim The Lunchbox Workshop has been delivered to government, private faith and independent private primary schools all over the state.



At Nutrition NSW we're passionate about working with schools and the community to promote healthy nutritious eating to children and teenagers. As research suggests lifestyle, behaviour patterns and eating habits adopted during this age persist throughout adulthood, having a significant influence on health and wellbeing in later life. We acknowledge the importance of including parents and carers in this education process to instill healthy habits from a young age.



Contact us

For more information on any of our School Services or for booking enquiries please contact us.

Nutrition NSW

- ✉ admin@nutritionaustraliansw.org.au
- 📍 Suite 1A, 124 Forest Road Hurstville NSW 2220
- 🌐 nutritionaustralia.org/nsw

Nutrition NSW is the peak body for evidence-based nutrition and preventative health.

Lansvale East Public School

21 Riverside Rd, Lansvale East NSW 2166

Phone: (02) 9728 1278 **Email:** lansvalee-p.school@det.nsw.edu.au

Website: <http://www.lansvalee-p.schools.nsw.edu.au/>

School Community Charter

 **Collaborative. Respectful. Communication.**

The following School Community Charter outlines the responsibilities of parents, carers, educators and school staff in NSW public schools to ensure our learning environments are collaborative, supportive and cohesive.

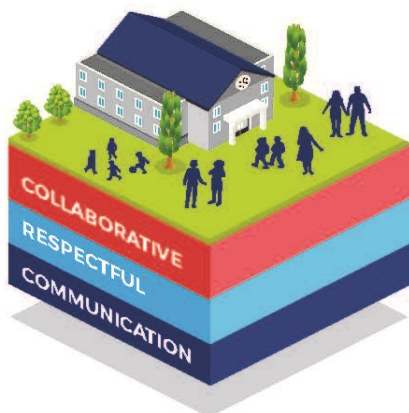
We treat
each other
with
respect

What our schools provide

NSW public schools work to create positive environments for students, staff and the entire school community that support student learning. We strive to ensure that every student is known, valued and cared for.

The best education happens when parents and schools work together.

The School Community Charter aligns with the NSW Department of Education Strategic Plan 2018 – 2022.



Positive environments

It is important that our NSW public schools are positive environments and that parents and carers are kept informed of students' progress and school announcements.

Parents and carers can expect:

- To be welcomed into our schools to work in partnership to promote student learning.
- Communication from school staff will be timely, polite and informative.
- Professional relationships with school staff are based on transparency, honesty and mutual respect.
- To be treated fairly. Tolerance and understanding are promoted as we respect diversity.

We
prioritise
the wellbeing
of all students
and staff

**Unsafe
behaviour**
is not acceptable
in our schools

We work
together
with the
school

Ensuring respectful learning environments for all members of NSW Public Schools communities.

© NSW Department of Education



We create
collaborative
learning
environments

We
all play
our part

We work
in partnership
to promote
student
learning

Communicating with our schools

Our staff will find a time to talk to you when they can give you their full attention. Please remember that while our staff are in class or dealing with other matters, they may not be available to answer your questions immediately.

Our schools and communities will make sure that written communication is appropriate, fair and easy to read. We encourage you to use email and social media appropriately to connect with your school and stay up-to-date with up-coming events in the school community.

Our guide for parents, carers and students provides useful information about the complaints process:

education.nsw.gov.au/about-us/rights-and-accountability/complaints-compliments-and-suggestions/guide-for-parents-carers-and-students

Respectful communication is a right

In all workplaces people have the right to feel respected. Unacceptable and offensive behaviour has no place in our school communities.

To ensure the wellbeing of students, staff and the community in our schools, steps will be taken to address unacceptable behaviour. This may include restricting contact with the school community or, in more serious cases, referral to NSW Police.



Unacceptable behaviour may include but is not limited to:

- Aggressive or intimidating actions, such as violence, threatening gestures or physical proximity.
- Aggressive or intimidating language, including the use of obscenities, making sexist, racist or derogatory comments or using a rude tone.
- Treating members of the school community differently due to aspects such as their religion or disability.
- Inappropriate and time wasting communication.



Collaborative.
Respectful.
Communication.

School Community Charter

education.nsw.gov.au

Lansvale East Public School

21 Riverside Rd, Lansvale East NSW 2166

Phone: (02) 9728 1278 **Email:** lansvalee-p.school@det.nsw.edu.au

Website: <http://www.lansvalee-p.schools.nsw.edu.au/>



UNIFORM ORDER FORM

Please indicate below the size and quantity of the items required and calculate the total.

Payments can be made by any of the following methods:

- Parent Online Payment (POP instructions on the back of this form)
- Correct cash in an envelope

Please send your completed order form to school with your child, alternatively please e-mail the form to

Lansvalee-p.school@det.nsw.edu.au

ITEM	COST	SIZE	QUANTITY	TOTAL
		4 6 8 10 12 14 16 M L		
School Dress	\$45:00			
Skort	\$20:00			
Short Sleeve Polo	\$25:00			
Long Sleeve Polo	\$30:00			
Shorts (Boys)	\$20:00			
Jacket	\$30:00			
Sports Shorts	\$20:00			
Sports Shirt	\$25:00			
Tracksuit	\$70:00			
Tracksuit Jacket	\$40:00			
Tracksuit Pants	\$30:00			
Hat/Cap	\$20:00			
Excursion Bag	\$15:00			
School Bag	\$35:00			
Library Bag	\$25:00			
			TOTAL	\$

Child's Name _____ Class _____ Date _____

Parent/Carer Name _____ Signature _____ Phone _____

Payment Method ☐ POP Payment ☐ Cash ☐ Credit Card

Visa ☐ Mastercard ☐ Card Number _____ / _____ / _____ / _____

Expiry _____ / _____ CCV _____

LANSVALE EAST PUBLIC SCHOOL
RIVERSIDE ROAD LANSVALE NSW 2166
TEL: 9728 1278 FAX: 9728 2339
EMAIL: lansvalee-p.school@det.nsw.edu.au WEB: www.lansvalee-p.school@det.nsw.edu.au

Lansvale East Public School

21 Riverside Rd, Lansvale East NSW 2166

Phone: (02) 9728 1278 Email: lansvalee-p.school@det.nsw.edu.au

Website: <http://www.lansvalee-p.schools.nsw.edu.au/>



PARENT ONLINE PAYMENTS

Using Westpac QuickWeb

Dear Parents,

Online payments are accessed through the home page of the school's website:

www.lansvalee-p.school@det.nsw.edu.au

The school website will have an option on the menu bar "Make a Payment".

When you click on this you will be taken straight to the Westpac QuickWeb page.

Payers will complete the necessary details, some of which are mandatory before confirming the payment details and completing the payment. A receipt can be printed from the payment page.

The payment screens are:

- Entering payment details
- Entering credit card details
- Confirmation of payment details and
- Online payment receipt

Payments can be made by Visa or MasterCard credit or debit card only. The school does not see any details of your card.

Please ensure you enter the child's correct name, class and details of what you are paying for. These details are necessary so that the payment is credited to the correct child.

All payments made before 6.00pm each day will be received at the school the next day. Payment after 6.00pm will not be received by the school for two days.

LANSVALE EAST PUBLIC SCHOOL
RIVERSIDE ROAD LANSVALE NSW 2166
TEL: 9728 1278 FAX: 9728 2339
EMAIL: lansvalee-p.school@det.nsw.edu.au WEB: www.lansvalee-p.school@det.nsw.edu.au

Lansvale East Public School

21 Riverside Rd, Lansvale East NSW 2166

Phone: (02) 9728 1278 **Email:** lansvalee-p.school@det.nsw.edu.au

Website: <http://www.lansvalee-p.schools.nsw.edu.au/>