



LEPS Community News

- From the Principal's desk
- K-1-2DT News
- Message from School Counsellor Mrs Pyke
- Sport News
- Meet the Teacher
- Notes sent home
- Uniform Price List

From the Principal's Desk

Dear Parents and Carers,

A huge thank you to all our staff, students, parents and carers for their amazing support in helping us get through term 1 2022. It has been an incredible term.

Staffing Updates

We would like to wish Mrs Siricki the very best as she commences her maternity Leave. Replacing Mrs Siricki is Mr Chu for 5-6S in Term 2 onwards.

We also farewell Miss Nitto and welcome Miss Thai to 1-3C for Term 2.

Our best wishes to Miss Sood as she moves to her new school for Term 2.

Mr Khoo will be taking on the role of Assistant Principal Curriculum and Instruction at Lansvale East Public School. Replacing Mr Khoo on 5-6K will be Mr Cung.

We thank the panel (Mrs Aberdine: parent and carer representative, Mrs Nguyen: Ethnic Representative, Mr Khoo: Classroom Teacher Representative and Mrs Ardle: Executive Representative) for assisting us in completing the process for permanent positions at Lansvale East Public School, congratulations to:

- Classroom teacher Special Education: Miss Tran.
- School Learning Support Officer: Mr Al-Saedi.

Despite the many staff changes we would like to reassure our families that term 2 will commence with all positions filled and a positive start in moving forward.

I would like to also thank the executive team Mrs Ardle, Mr Khoo and Mrs Siricki over the last three days whilst I had knee surgery and their support in running the school.

With the end of term 1 we would like to wish all our families a safe and restful break over the next two weeks.

If you have any questions please do not hesitate to reach out and send me an email: Erika.kardasis@det.nsw.edu.au
Stay safe and see you all in term 2.



End of Term 1	Friday 8th April
Starting of Term 2	Wednesday 27th April
School Photo Day	Wednesday 27th April
Mother's Day Stall	Thursday 5th May

Term 1 in K-1-2DT!



Every Friday this term, students have been participating in Futboltec and learning basic soccer skills. Students have shown resilience by never giving up no matter how difficult the skills are, and are always trying harder each week. Keep up the great work!

On the 31st of March, the school had our Easter Hat Parade. It was great to see students being creative with their easter hats, as well as having parents join us at the school assembly and lunch. Thank you to the many parents who also joined us for open classrooms!



Easter Hat Parade



The school counsellor, Mrs Pyke, hopes that you all have a safe and enjoyable break

Why not...

Read a book
Play some board games
Do some cooking
Watch a favourite movie
Listen to some music
Dance
Do some craft activities
Get outdoors if the weather permits
Do some yoga
Sing
Relax

If you are struggling to cope and you need some help:

- Kids Helpline: 1800 55 1800
- Lifeline: 13 11 14
- Mental Health Access line: 1800 011 511
- Domestic violence: 1800 737 732 (1800RESPECT)

LEPS Sports News

On the 29 March 2022 Lansvale East Public School sent 4 students, Dajetikai, Khaled, Lexiiyus and Siteli to the Sydney Southwest (SSW) Basketball Championship. 4 games were played for the boys with 1 win and 3 losses, however, each game was very close. 5 games were played by the girls as they made it to the semi-finals against East Hill girls. The girls results were 3 wins and 1 loss and playing the semi-finals game the girls made a great effort but unfortunately lost. Both teams played well with 6 boys in the SSW boys team and 5 girls in the SSW girls team. Overall, it was a successful day and all the students gained valuable experience playing a team sport with other schools in the Lansdowne Zone.

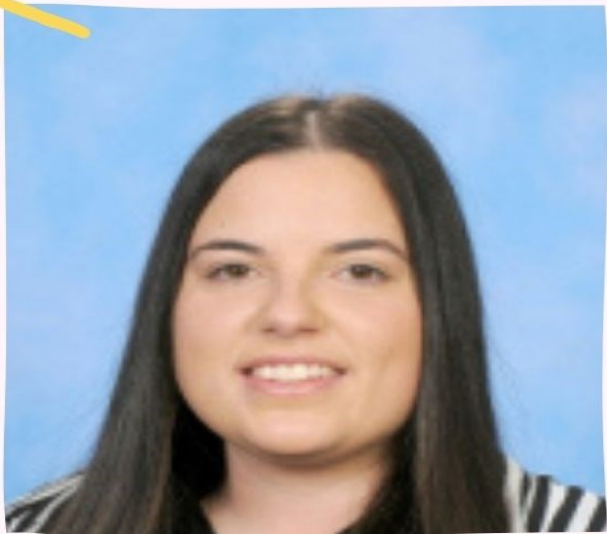


Have a lovely school holiday!

Mr Diep

MEET THE TEACHER

Miss. Droulias



MY FAVOURITES...

Colour: Pink and blue

Book: Pig the Pug

Movie: Despicable Me

Food: Pasta

Hobby: Drawing and spending time with friends and family

This year will be my 4th year teaching at Lansvale East Public School.

It is my 2nd year being a part of the K-2 Team.

EDUCATION...

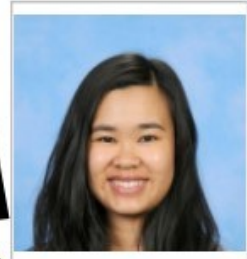
I graduated from the University of Wollongong with a Bachelor of Primary Education, minoring in Health and Physical Education.

FUN FACT...

My family background is Greek. I can read, write and speak the language.

MEET THE TEACHER

Miss Tang



Welcome to K-1-2DT!

DEAR FAMILIES,

I am very excited to meet all the new and existing families this year at LEPS and get to know you all! This year we have a great new open classroom initiative in the K-1-2 team which will support our students both socially and academically.

The K-1-2 teachers are developing great programs for English and Numeracy to develop their literacy skills. We are also utilising three different classrooms this year to create fun and engaging activities in Creative Arts, Science and Technology, History and Geography.

MY FAVORITES:

Book: Don't Let the Pigeon Stay Up Late!

Movie: Wreck it Ralph

Food: Hot chips

Hobby: Cooking, spending time with family

Colour: Purple

ABOUT ME:

My name is Miss Tang and I grew up in South Western Sydney. I graduated from Western Sydney University with a Masters of Teaching Primary. I became a teacher because I enjoy working with children and watching them grow into confident and independent learners. I love teaching science as it provides students with the opportunity to investigate how everything works in our rapidly developing world!

If you would like to speak with me regarding your child, you can reach me via ClassDojo.

Copyright © 2018 Carolyn Hansen



MEET THE TEACHER

Hello, my Name is Miss Dinh and I am a part of the K-1-2DT team.

Here are some facts about me:

This is my 2nd year of teaching at Lansvale East Public School.

I graduated from ACU with a Bachelor of Primary Education.

My favourite foods are pasta and fried chicken.

My hobbies are graphic design and eating with friends and family.



MISS TRAN 4-5T

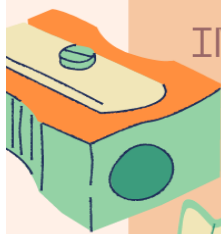


MY FAVOURITES:

BOOK: THE VERY HUNGRY
CATERPILLAR
MOVIE: TANGLED
FOOD: SUSHI
HOBBY: ARTS AND CRAFT
COLOUR: PINK
ANIMAL: DOGS



HI, MY NAME IS
MISS TRAN.
I AM SO EXCITED TO
BE TEACHING YEAR 4
AND 5 THIS YEAR. I
CAN'T WAIT FOR ALL
THE FUN AND
INTERESTING LEARNING
OPPORTUNITIES WE
WILL HAVE THIS
YEAR IN
4-5T.



4-5T IMPORTANT NOTES

LIBRARY: WEDNESDAY WITH
4-5E

SPORTS: FRIDAYS WITH 4-5E

2:45PM: STUDENT PICK UP
TIME

MESSAGE: SEND A MESSAGE
ON CLASS DOJO

PHONE: LEPS PHONE
(02) 9728 1278

Applying for Year 5 entry to an opportunity class in **2023**

Once you complete and submit your application you can change details, send and receive messages through your application dashboard.

Thinking of applying for Year 5 entry to an opportunity class in 2023?

You must apply online at:
<https://education.nsw.gov.au/public-schools/selective-high-schools-and-opportunity-classes/year-5>



Key dates

Application website opens:

Tuesday 26 April 2022

Application website closes:

5pm, Friday 13 May 2022

You must apply before this deadline

Test centre advice sent:

Thursday 14 July 2022

Opportunity Class Placement Test:

Thursday 28 July 2022

Placement outcome information released overnight on:

Friday 7 October 2022

Please read this document carefully before applying.

Parents* monitor the Department's website regularly for updates throughout the application and placement process at:
<https://education.nsw.gov.au/public-schools/selective-high-schools-and-opportunity-classes/year-5>

Please check the Department's website for information before you contact the Team.

The opportunity class placement process for Year 5 entry is administered by the High Performing Students Team*.

Contact Details:

High Performing Students Team, NSW Department of Education

Email: ssu@det.nsw.edu.au

Telephone: 1300 880 367 Telephone Interpreter Service: 131450

Postal Address: GPO Box 33, SYDNEY, NSW 2001

Facebook: <https://www.facebook.com/groups/159342048077050>

Please Note:

*In this document, the High Performing Students Team is referred to as the Team.

**Parent* is defined under the Education Act, 1990, as a 'guardian or other person having custody or care of a child'.

Lansvale East Public School

21 Riverside Rd, Lansvale East NSW 2166

Phone: (02) 9728 1278 Email: lansvalee-p.school@det.nsw.edu.au

Website: <http://www.lansvalee-p.schools.nsw.edu.au/>



Intention to Apply for Year 5 Entry to an Opportunity Class (OC) in 2023

Thursday 7th April 2022

Dear Parent/Carer,

Opportunity classes cater for intellectually gifted and high potential students who may otherwise be without sufficient classmates at their own academic and social level. Students successfully placed will usually have to leave their current school to enrol in a school with an opportunity class for Years 5 and 6.

Testing and assessment

Applications for opportunity class placement are considered on the results of the Opportunity Class Placement Test alone. Students who wish to be considered for opportunity class placement will sit the Opportunity Class Placement Test on **Thursday 28 July 2022**.

How to apply

If you would like to have your child considered for Year 5 opportunity class entry in 2023, you need to apply between **Tuesday 26 April 2022** and **Friday 13 May 2022**. You will need to access the online application at: <https://education.nsw.gov.au/public-schools/selective-high-schools-and-opportunity-classes/year-5>. You must not use the child's email address. Late applications are not usually accepted.

If you do not have internet access, you could apply at a public library. If you have a disability that prevents you from using a computer, you can contact the Team for assistance after **Tuesday 26 April 2022**.

You must submit only **ONE application** for each student.

The cut-off slip below is NOT an application and the school cannot apply on your behalf.

Yours sincerely
Mr T Khoo
Stage 2-3 Assistant Principal

Ms E Ortega
Principal

THIS IS NOT AN APPLICATION FOR ENTRY TO AN OPPORTUNITY CLASS

This is a notice to your primary school only that you intend to apply.

To apply you will need to register your email and then submit an application through the Department's website at:

<https://education.nsw.gov.au/public-schools/selective-high-schools-and-opportunity-classes/year-5>

----- Please detach -----



Intention to Apply for Year 5 Entry to an Opportunity Class (OC) in 2023

If you would like to apply for Opportunity Class Placement Entry in 2023 for your child, please complete the section below, cut along the dotted line and return the completed slip to your child's teacher by:

Wednesday 27 April 2022

Student's name: _____ Class: _____

I intend to apply for opportunity class placement entry in 2023 for my child through the Department's website between 26 April and 13 May 2022.

Signature of Parent/Carer: _____ Date: _____

school photographs are coming up soon



Group presentation format is chosen by your school. Format may vary from options shown.



Perfect for 10x8" Frames



12x17mm



82x127mm



34x135mm



38x63mm



63x87mm



53x74mm



29x41mm



48 Personalised Stickers

Please note: Traditional or Composite group and the presentation format are chosen by your school. Sibling photos, if available, can also be ordered online and must be ordered prior to your photo day. A late fee will apply for photos purchased after ordering has closed.

how to order

order online

Online payment options include Visa, Mastercard and PayPal. Alternatively, you can choose to pay over 10 weeks using LatitudePay.

STEP 1

Go to www.advancedlife.com.au on your computer, phone or tablet.

STEP 2

Enter your school code:

WXB 5JD 8V7

in the 'order and download' box.

This will take you to your school's secure online ordering site.



STEP 3

Click on 'Order Photos' and complete your details and procedures. During this process you can place orders for additional children at your school and sibling photos, if available



cash/envelope ordering

Your school prefers orders to be placed online. However, if you are unable to order online, please complete your order using the order envelope provided.

STEP 1

Complete a separate order envelope for each individual child's package/s ordered. If ordering for more than one child, payment should be enclosed in the envelope of the eldest child and this should be indicated on the envelope of the other child/children (the envelope that does not have cash enclosed).

STEP 2

Enclose exact cash payment in one envelope for the package/s you are ordering. Payment for more than one child should be in the eldest child's envelope and marked at the bottom of the envelope in the space provided.

STEP 3

Return your completed envelope/s, with correct cash payment, to our photographers on the day.

Please note: You must enclose exact correct payment, as change is not available. Credit card payments can only be made online and we no longer accept cheques. There is a separate envelope for sibling photo orders, should your school choose to offer sibling photos.

School photographs will be returned to your school 4-6 weeks after the day of photography

IMPORTANT - "not for publication" students

If you have instructed your school that your child's image is "not for publication" (sometimes called "do not publish" or "not for media release" instructions), the school will ensure that your child is not presented to our photographers on photo day and school photographs will not be available for purchase. If you wish to change your instruction, then you must notify your school, so they change their records and identify your child as able to be photographed for school photography purposes. All students presented to our photographers by your school on photo day will be photographed, their images will appear in school photography packages with their fellow students and these packages will be available to purchase by all families.

Contact us: www.advancedlife.com.au/contact

advancedlife
school photography & print specialists

Lansvale East Public School

21 Riverside Rd, Lansvale East NSW 2166

Phone: (02) 9728 1278 Email: lansvalee-p.school@det.nsw.edu.au

Website: <http://www.lansvalee-p.schools.nsw.edu.au/>



UNIFORM ORDER FORM

Please indicate below the size and quantity of the items required and calculate the total.

Payments can be made by any of the following methods:

- Parent Online Payment (POP instructions on the back of this form)
- Correct cash in an envelope

Please send your completed order form to school with your child, alternatively please e-mail the form to

Lansvalee-p.school@det.nsw.edu.au

ITEM	COST	SIZE							QUANTITY	TOTAL
		4	6	8	10	12	14	16		
School Dress	\$45:00									
Skort	\$20:00									
Short Sleeve Polo	\$25:00									
Long Sleeve Polo	\$30:00									
Shorts (Boys)	\$20:00									
Jacket	\$30:00									
Sports Shorts	\$20:00									
Sports Shirt	\$25:00									
Tracksuit	\$70:00									
Tracksuit Jacket	\$40:00									
Tracksuit Pants	\$30:00									
Hat/Cap	\$20:00									
Excursion Bag	\$15:00									
School Bag	\$35:00									
Library Bag	\$25:00									
									TOTAL	\$

Child's Name _____ Class _____ Date _____

Parent/Carer Name _____ Signature _____ Phone _____

Payment Method POP Payment Cash Credit Card

Visa Mastercard Card Number _____ / _____ / _____ / _____
 Expiry _____ / _____ CCV _____

LANSVALE EAST PUBLIC SCHOOL
 RIVERSIDE ROAD LANSVALE NSW 2166
 TEL: 9728 1278 FAX: 9728 2339
 EMAIL: lansvalee-p.school@det.nsw.edu.au WEB: www.lansvalee-p.school@det.nsw.edu.au



PARENT ONLINE PAYMENTS

Using Westpac QuickWeb

Dear Parents,

Online payments are accessed through the home page of the school's website:

www.lansvalee-p.school@det.nsw.edu.au

The school website will have an option on the menu bar "Make a Payment".

When you click on this you will be taken straight to the Westpac QuickWeb page.

Payers will complete the necessary details, some of which are mandatory before confirming the payment details and completing the payment. A receipt can be printed from the payment page.

The payment screens are:

- Entering payment details
- Entering credit card details
- Confirmation of payment details and
- Online payment receipt

Payments can be made by Visa or MasterCard credit or debit card only. The school does not see any details of your card.

Please ensure you enter the child's correct name, class and details of what you are paying for. These details are necessary so that the payment is credited to the correct child.

All payments made before 6.00pm each day will be received at the school the next day. Payment after 6.00pm will not be received by the school for two days.

LANSVALE EAST PUBLIC SCHOOL
RIVERSIDE ROAD LANSVALE NSW 2166
TEL: 9728 1278 FAX: 9728 2339
EMAIL: lansvalee-p.school@det.nsw.edu.au WEB: www.lansvalee-p.school@det.nsw.edu.au

Lansvale East Public School

21 Riverside Rd, Lansvale East NSW 2166

Phone: (02) 9728 1278 Email: lansvalee-p.school@det.nsw.edu.au

Website: <http://www.lansvalee-p.schools.nsw.edu.au/>

School Community Charter

 **Collaborative. Respectful. Communication.**

The following School Community Charter outlines the responsibilities of parents, carers, educators and school staff in NSW public schools to ensure our learning environments are collaborative, supportive and cohesive.

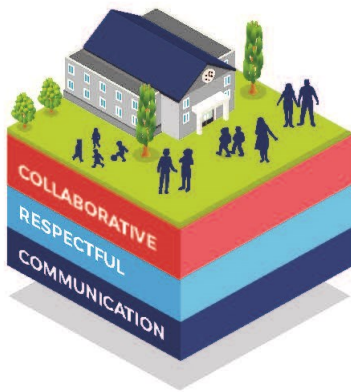
We treat
each other
with
respect

What our schools provide

NSW public schools work to create positive environments for students, staff and the entire school community that support student learning. We strive to ensure that every student is known, valued and cared for.

The best education happens when parents and schools work together.

The School Community Charter aligns with the NSW Department of Education Strategic Plan 2018 – 2022.



Positive environments

It is important that our NSW public schools are positive environments and that parents and carers are kept informed of students' progress and school announcements.

Parents and carers can expect:

- To be welcomed into our schools to work in partnership to promote student learning.
- Communication from school staff will be timely, polite and informative.
- Professional relationships with school staff are based on transparency, honesty and mutual respect.
- To be treated fairly. Tolerance and understanding are promoted as we respect diversity.

We
prioritise
the wellbeing
of all students
and staff

**Unsafe
behaviour**
is not acceptable
in our schools

We work
together
with the
school

Ensuring respectful learning environments for all members of NSW Public Schools communities.

© NSW Department of Education



We create **collaborative** learning environments

We all play **our part**

We work **in partnership** to promote student learning

Communicating with our schools

Our staff will find a time to talk to you when they can give you their full attention. Please remember that while our staff are in class or dealing with other matters, they may not be available to answer your questions immediately.

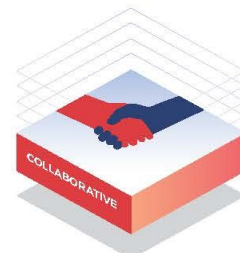
Our schools and communities will make sure that written communication is appropriate, fair and easy to read. We encourage you to use email and social media appropriately to connect with your school and stay up-to-date with up-coming events in the school community.

Our guide for parents, carers and students provides useful information about the complaints process:
education.nsw.gov.au/about-us/rights-and-accountability/complaints-compliments-and-suggestions/guide-for-parents-carers-and-students

Respectful communication is a right

In all workplaces people have the right to feel respected. Unacceptable and offensive behaviour has no place in our school communities.

To ensure the wellbeing of students, staff and the community in our schools, steps will be taken to address unacceptable behaviour. This may include restricting contact with the school community or, in more serious cases, referral to NSW Police.



Unacceptable behaviour may include but is not limited to:

- Aggressive or intimidating actions, such as violence, threatening gestures or physical proximity.
- Aggressive or intimidating language, including the use of obscenities, making sexist, racist or derogatory comments or using a rude tone.
- Treating members of the school community differently due to aspects such as their religion or disability.
- Inappropriate and time wasting communication.



Collaborative.
Respectful.
Communication.

School Community Charter

education.nsw.gov.au

Lansvale East Public School

21 Riverside Rd, Lansvale East NSW 2166

Phone: (02) 9728 1278 **Email:** lansvalee-p.school@det.nsw.edu.au

Website: <http://www.lansvalee-p.schools.nsw.edu.au/>