



# LEPS Community News

- From the Principal's desk
- K-1-2DT News
- 2-4P News
- 3-4T News
- Meet the Teacher
- PBL News
- Message from the School counsellor
- Mrs Pyke
- LEPS Wellbeing
- School support Dogs
- Notes sent home
- Uniform Price List

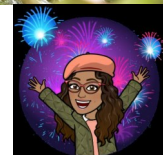
Queen's  
Birthday  
Holiday  
NO SCHOOL

Monday  
13th June

## From the Principal's Desk

Dear Parents and Carers,

Over the last two weeks we have had some work done on the school entry points at Jupiter St and Hollywood Dr. This work is now completed and we hope this will assist the school during heavy rain periods where we have not been able to access the school. Work was also completed in front of the senior classes so that access to these classrooms and the toilets will not be a concern during heavy rain. We have been fortunate to have some amazing weather with no rain and lots of sunshine and this has allowed for the grass to dry up allowing the students to play on Friday. We look forward to more fun play time on the grass in the coming weeks.



## Cold Weather

The colder weather is a good opportunity to ensure your child is set for winter with the correct school uniform. Please send your child to school with a blue school jumper. If it is very cold a blue jacket is allowed to match the school uniform. Make certain that your child's name is on their items for easy identification. It is also a timely reminder that students should not keep layers of clothing on when in the classroom. Our classrooms are heated so students should take their jumper/ jacket off, only to put it back on when leaving the classroom.

## School Attendance

All staff members, are focused on improving student attendance. Children must be at school every day and only staying home for a day or two if they are sick (different guidelines apply if you have COVID). If a child is still not well after one or two days, then this means a visit to the local doctor. Parents and carers need to continue to communicate with their classroom teacher or the school directly if your child is not at school, there are lots of ways to notify the school:

- use the school app - ClassDojo, send a message to the teacher
- phone the school on 9728 1278
- email the school on [lansvalee-p.school@det.nsw.edu.au](mailto:lansvalee-p.school@det.nsw.edu.au)

# Days missed = years lost

A day here and there doesn't seem like much, but...

When your child misses just...

they miss weeks per year

and years over their school life



## Non Attendance Concerns

Research has found that students not attending schools has a variety of effects on students. When students are continuously absent it can increase social isolation, including alienation and lack of engagement with the school community and peers, leading to emotional and behavioural difficulties. Attendance is also an important contributor to a student's academic achievement. There are significant links between a student being absent and academic achievement in school. Students academic success declines with continued absence creating larger gaps for them to try to catch up to their peers. If you are having trouble with getting your child ready for school please let your classroom teacher know so that we can assist.

## School Lateness

Please support your child arriving to school on time. To assist them it is important they have their uniform ready the night before. Students should be getting to bed early and switching off devices 30 minutes before bed time. It also helps to encourage them to read before bed to help them relax. Keep regular sleep and wake times to assist in building a routine. Always send your child to school with lots of hugs and words to build confidence that will assist them to feel happy for the day ahead.

## Attendance and absences

Parents of children from Kindergarten to Year 12 must ensure their children attend school every day. On occasion, your child may need to be absent from school. Justified reasons for student absences may include:

- being sick or having an infectious disease
- having an unavoidable medical appointment
- being required to attend a recognised religious holiday
- exceptional or urgent family circumstances e.g. attending a funeral.

Parents must provide an explanation for absences to the school within 7 days from the first day of any period of absence. Where an explanation has not been received within the 7-day timeframe, the school will record the absence as unjustified on the student's record.

## Early Departures

If your child has to leave early for a medical appointment, please contact the school prior to let us know. Parents and Carers must come to the front office and explain the reason for their child leaving early. This is then recorded on our school system.

Please note that all appointments need to be made after school hours to support your child having a successful day at school and not missing out on their teaching and learning. Please let us know if you have any questions by contacting the front office on 9728 1278.

## School lunches

At Lansvale East Public School we have lunch at 11 am. It is important that children bring healthy eating options to school. We are seeing too many students bring to school soft drinks, noodles every day, cookies or biscuits, that do not fall into healthy eating. The health and wellbeing of students is relevant to their learning and is important. If you are unsure of what to include please contact your child's teacher for suggestions through ClassDojo.

We have the canteen open three days a week to provide support for our families.

**NOW AVAILABLE**

# SCHOOL (CANTEEN) MENU

**MEALS AVAILABLE**

**MONDAY** - freshly made Halal chicken fried rice meal **\$5.00**  
(with carrot, peas and corn) (option no chicken)  
with fruit and drink

**WEDNESDAY**- Chicken noodles OR Toasted cheese sandwich meal **\$4.00**  
with fruit and drink

**FRIDAY**- Fresh made Napoletana sauce penne pasta meal **\$5.00**  
(Choice or grated parmesan cheese on top)  
with fruit and drink



# WHAT'S HAPPENING IN K-1-2DT?



## SOUNDWAVES

In Soundwaves, K-1-2DT have been using the mini whiteboards to practise writing simple sentences by checking for capital letters, finger spaces, and full stops.



## CROSS COUNTRY

The kindergarten's enjoyed their first Cross Country as they cheered on their classmates and received a ribbon for their fantastic efforts!



## MATHEMATICS

K-1-2DT have been exploring length in Mathematics. They are measuring the distance their paper planes flew using footsteps.

TERM 2 WEEK 7



# 2-4P Great Learning!



In 2-4P, students are engaging in fun, interactive and hands-on learning activities. Students have explored a different phoneme and grapheme each week. All our key learning areas have been linked to the focus phoneme or grapheme. This week the focus letter was 'e' and 'ee'.

## English



Students writing about bees.

## Creative Arts/ Science



'E for Earth'

## ICT



## Maths



Students counting, identifying and regrouping numbers using objects.



# 3-4T CLASSROOM NEWS

In 3-4T, we are learning to incorporate our PBL rules of Responsible, Responsible and Resilient learners.

In Science, we are learning about living and non-living things and will be going on an excursion in Week 7 to Mt Annan Botanical Gardens to further support our learning.



## CAPA

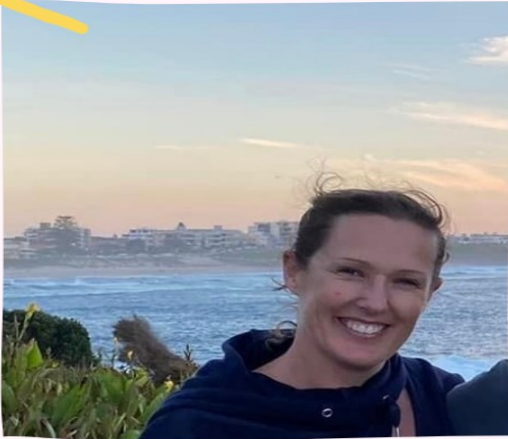
This term, 3-4T and 2-4P have been integrating every Friday to engage in gymnastics, music and sport.

In music, 3-4T and 2-4P have been practicing singing and using body percussions to produce music. Both classes performed 'Fight Song' during Week 6 assembly for Reconciliation Week.



# MEET THE TEACHER

## Mrs Kingsnorth



### About Me

I started this term at Lansvale East Public School and my role is the EAL/D teacher (English as an additional language or dialect). I have 8 years of teaching experience as a classroom teacher, including all KLA's. I am very passionate about literacy and supporting students on their learning journey.

### Education

- Bachelor of Education (Primary)
- I am currently completing a Graduate Certificate in TESOL.



### Favourites

Colour: blue

Book: too many to list! I love children's authors Julia Donaldson and Jeannie Baker.

Family Movie: Big Hero 6

Food: Japanese (Sashimi) and Lebanese vine leaves.

Hobbies: ocean swims, reading, and bushwalking with my dogs.





# PBL NEWS

Be responsible Be respectful Be resilient

## PBL FOCUS

Week 6 & 7

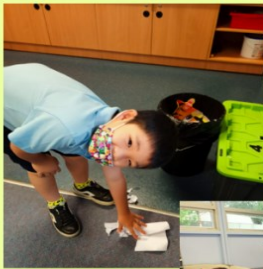
Being responsible in the classroom and respectful on the playground.

For students to understand and demonstrate appropriate and safe behaviour in the classroom and on the playground by following game rules.

Students from 3-4T and K12DT being responsible on the playground.



Students from 2-4P demonstrating the responsible behaviour in the classroom.



## PBL Gotcha awards

Congratulations to Zaynab, Zachariah and Bernard for receiving the GOTCHA awards.





## A GOOD READ



*Sharing books with children can be a rewarding experience for both the child and the adult. It's good to start early but also, it's never too late!*

*You'll help to promote language and literacy development and also have some special time to bond with your child.*

*At just a few months old, babies can look at pictures and listen to your voice when you share a book with them. As they get older they will point and grow to understand the link between objects on the page to the spoken word. Eventually they will learn that the symbols written on the page can be spoken.*

*As they learn to read themselves, continue to read to them. By reading stories that are at their interest level but too hard for them to read you can help to stimulate their imagination, transport them into other people's worlds or help them learn something new. In this relaxed atmosphere they can learn to appreciate the joy that comes from reading.*

*If English isn't your first language, read stories in your own and allow your child to learn more about their culture. Telling them stories is also a great activity to promote language development.*

*If your child will not settle to be read to, they may enjoy songs and rhymes that you can share together.*

*Time is short for many families but finding 15 -20 minutes at bedtime to read a story can be soothing, fun and a great way to encourage an interest in books and reading.*



<https://raisingchildren.net.au/babies/play-learning/literacy-reading-stories/reading-storytelling#:~:text=Reading%20and%20storytelling%20with%20babies%20and%20children%20promotes%20brain%20development,tell%20stories%20from%20your%20culture.>

School counsellor Mrs Sue Pyke



Outside of School Hours Care

## WE ARE YOUR NEW ONSITE OSHC PROVIDER!



### A BIG WELCOME

We are so excited to be partnering with Lansvale East Public School starting Wednesday June 1, and we cannot wait to meet you all!

We will be available to care for your child onsite before and after school. Enrol with us today and claim your FREE \$500 voucher via the Service NSW app to use at our service! This could get you approximately 60 FREE sessions with us depending on your circumstances!

For enquiries or expressions of interest, please contact us via phone or email or simply enrol online at [bigchildcare.com/enrol](http://bigchildcare.com/enrol)

Centre Mobile	0428 776 507
Centre Email	<a href="mailto:lansvaleeast@bigchildcare.com">lansvaleeast@bigchildcare.com</a>

	Operating Hours	Session Cost
Before School Care	6:30am to 8:30am	\$14.85
After School Care	2:45pm to 6:00pm	\$23.00
Holiday Care	6:30am to 6:00pm	\$50.00+
Staff Development Day	6:30am to 6:00pm	\$50.00

+ additional activity fee applies for excursions  
\$2 casual booking fee applies for non-permanent bookings



#### Child Care Subsidy (CCS)



SCAN ME

Your cost of care may be reduced by up to 85% with CCS.

To find out if you are eligible, scan the QR code or call Services Australia on 13 61 50 between 9am and 5pm (local time) weekdays.



FOLLOW US!



Lansvale East Public School

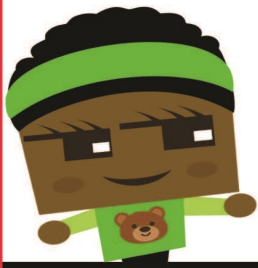
21 Riverside Rd, Lansvale East NSW 2166

Phone: (02) 9728 1278 Email: [lansvalee-p.school@det.nsw.edu.au](mailto:lansvalee-p.school@det.nsw.edu.au)

Website: <http://www.lansvalee-p.schools.nsw.edu.au/>

# big

CHILDCARE



## CLAIM YOUR

# \$500 VOUCHER

**Every family with children at a NSW primary school  
is eligible for a \$500 voucher per child.**

Voucher covers gap fees for before school care, after school care, and holiday care, which will provide approximately 60 free sessions depending on your circumstances.

Families can apply for the vouchers from 28 February to 30 September 2022 via the Service NSW app, online at [service.nsw.gov.au](http://service.nsw.gov.au) or at a local Service NSW centre.



Register your interest  
now for your  
free child care!



Limited spots available. Register now to avoid disappointment!

COURTESY OF



For more info, please visit [www.service.nsw.gov.au/basc-voucher](http://www.service.nsw.gov.au/basc-voucher)

Give yourself some YOU time while the kids have a FUN time!

**Lansvale East Public School**

21 Riverside Rd, Lansvale East NSW 2166

Phone: (02) 9728 1278 Email: [lansvalee-p.school@det.nsw.edu.au](mailto:lansvalee-p.school@det.nsw.edu.au)

Website: <http://www.lansvalee-p.schools.nsw.edu.au/>

# SURVEY RESULTS

## PARENT PICK UP AND DROP OFF TIMES

At Lansvale East Public School, we were wanting to gather feedback from our community regarding the drop off and pick up times for our school.

A survey was sent out via Class Dojo with 3 questions for parents to answer regarding our school parent drop off and pick up times.

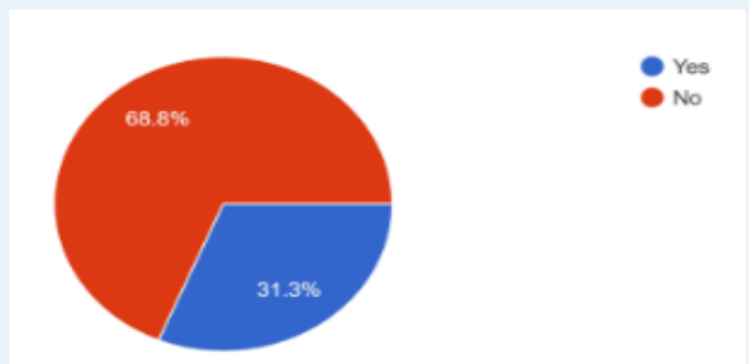
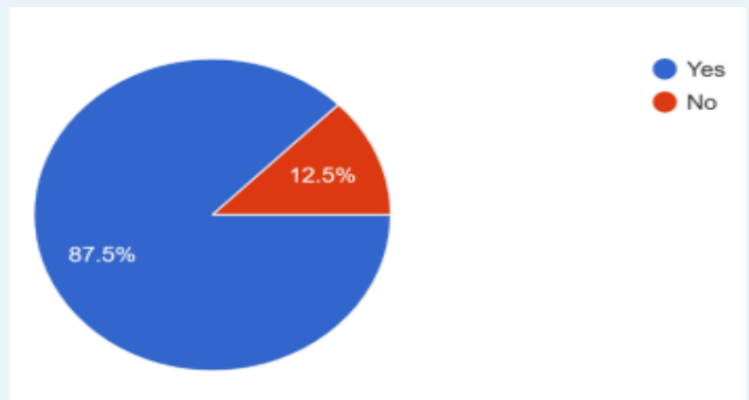
Thank you to all the families who took a moment to complete the short survey. Your feedback is greatly appreciated.

### RESULTS:

The results show that parents are currently happy with the school times.

- 87.5% of responses like our current school starting and finishing time

- 68.8% of responses would not prefer the school times to change to be 8:15am drop off, 8:45am start, 2:45pm finish.





Outside of School Hours Care

**WE ARE YOUR NEW ONSITE OSHC PROVIDER!**

**A BIG WELCOME**

We are so excited to be partnering with Lansvale East Public School starting Wednesday June 1, and we cannot wait to meet you all!

We will be available to care for your child onsite before and after school. Enrol with us today and claim your FREE \$500 voucher via the Service NSW app to use at our service! This could get you approximately 60 FREE sessions with us depending on your circumstances!

For enquiries or expressions of interest, please contact us via phone or email or simply enrol online at [bigchildcare.com/enrol](http://bigchildcare.com/enrol)

Centre Mobile	0428 776 507
Centre Email	<a href="mailto:lansvaleeast@bigchildcare.com">lansvaleeast@bigchildcare.com</a>

	Operating Hours	Session Cost
Before School Care	6:30am to 8:30am	\$14.85
After School Care	2:45pm to 6:00pm	\$23.00
Holiday Care	6:30am to 6:00pm	\$50.00+
Staff Development Day	6:30am to 6:00pm	\$50.00

+ additional activity fee applies for excursions  
\$2 casual booking fee applies for non-permanent bookings

**Child Care Subsidy (CCS)**



Your cost of care may be reduced by up to 85% with CCS.

To find out if you are eligible, scan the QR code or call Services Australia on 13 61 50 between 9am and 5pm (local time) weekdays.



FOLLOW US!



**Lansvale East Public School**

21 Riverside Rd, Lansvale East NSW 2166

Phone: (02) 9728 1278 Email: [lansvalee-p.school@det.nsw.edu.au](mailto:lansvalee-p.school@det.nsw.edu.au)

Website: <http://www.lansvalee-p.schools.nsw.edu.au/>



# WELCOME TO **BIG** CHILDCARE



Claim your  
**FREE**

**\$500**

Via the Service  
NSW app to use at  
Big Childcare!

Outside of School Hours Care

## **WE ARE YOUR NEW ONSITE OSHC PROVIDER!**

We're located in Lansvale East Public School for your convenience.  
Come and say hello to our friendly centre manager before or after school!

### Who are we?

Big Childcare is a trusted OSHC provider. Our directors Ted and Sian Hatzakortzian have served families for over a decade in the industry, delivering a unique and holistic service across Australia.

But we are more than just an OSHC service! At Big Childcare we pride ourselves on ensuring every child's needs are put first, to give them a sense of belonging and safety, whilst of course having loads of fun!

We can't wait to meet your child, get to know them and ensure they have a great time when they are with us!



### What is OSHC?

OSHC stands for Outside School Hours Care which your school has outsourced to us because we have expertise in providing Before School, After School, Curriculum Day and Holiday Care.

We operate in partnership with schools so that you can drop your children off before heading to work or pick them up after you finish, knowing they are well cared for by our team.



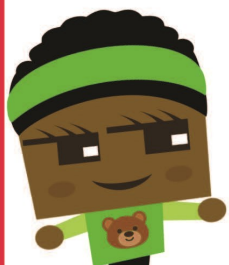
**Lansvale East Public School**

21 Riverside Rd, Lansvale East NSW 2166

Phone: (02) 9728 1278 Email: [lansvalee-p.school@det.nsw.edu.au](mailto:lansvalee-p.school@det.nsw.edu.au)

Website: <http://www.lansvalee-p.schools.nsw.edu.au/>

# big CHILDCARE



## CLAIM YOUR

# \$500 VOUCHER

**Every family with children at a NSW primary school  
is eligible for a \$500 voucher per child.**

Voucher covers gap fees for before school care, after school care, and holiday care, which will provide approximately 60 free sessions depending on your circumstances.

Families can apply for the vouchers from 28 February to 30 September 2022 via the Service NSW app, online at [service.nsw.gov.au](http://service.nsw.gov.au) or at a local Service NSW centre.



Register your interest  
now for your  
free child care!



**Limited spots available. Register now to avoid disappointment!**

COURTESY OF



For more info, please visit [www.service.nsw.gov.au/basc-voucher](http://www.service.nsw.gov.au/basc-voucher)

**Give yourself some YOU time while the kids have a FUN time!**

**Lansvale East Public School**

21 Riverside Rd, Lansvale East NSW 2166

Phone: (02) 9728 1278 Email: [lansvalee-p.school@det.nsw.edu.au](mailto:lansvalee-p.school@det.nsw.edu.au)

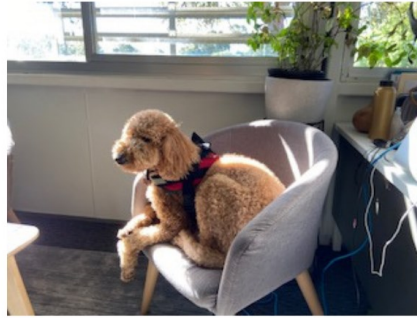
Website: <http://www.lansvalee-p.schools.nsw.edu.au/>

# LEPS WELLBEING SCHOOL SUPPORT DOGS

VISITING CLASSROOMS



Sade visits 3-4T each week to listen to students read.



Sade also enjoys being part of meetings in the office to offer advice.



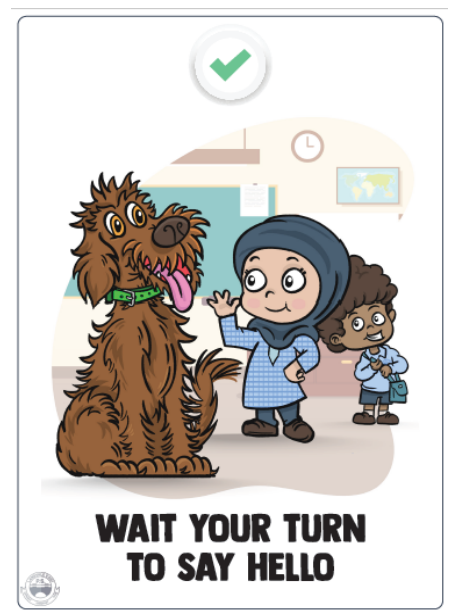
Lenny has been assisting with helping students on the playground.



Lenny visiting 4-5E on Crazy hair day.



## Reminders for students







## PARENT ONLINE PAYMENTS

Using Westpac QuickWeb

Dear Parents,

Online payments are accessed through the home page of the school's website:

[www.lansvalee-p.school@det.nsw.edu.au](http://www.lansvalee-p.school@det.nsw.edu.au)

The school website will have an option on the menu bar "Make a Payment".

When you click on this you will be taken straight to the Westpac QuickWeb page.

Payers will complete the necessary details, some of which are mandatory before confirming the payment details and completing the payment. A receipt can be printed from the payment page.

The payment screens are:

- Entering payment details
- Entering credit card details
- Confirmation of payment details and
- Online payment receipt

Payments can be made by Visa or MasterCard credit or debit card only. The school does not see any details of your card.

Please ensure you enter the child's correct name, class and details of what you are paying for. These details are necessary so that the payment is credited to the correct child.

All payments made before 6.00pm each day will be received at the school the next day. Payment after 6.00pm will not be received by the school for two days.

LANSVALE EAST PUBLIC SCHOOL  
RIVERSIDE ROAD LANSVALE NSW 2166  
TEL: 9728 1278 FAX: 9728 2339  
EMAIL: [lansvalee-p.school@det.nsw.edu.au](mailto:lansvalee-p.school@det.nsw.edu.au) WEB: [www.lansvalee-p.school@det.nsw.edu.au](http://www.lansvalee-p.school@det.nsw.edu.au)

**Lansvale East Public School**

**21 Riverside Rd, Lansvale East NSW 2166**

**Phone:** (02) 9728 1278 **Email:** [lansvalee-p.school@det.nsw.edu.au](mailto:lansvalee-p.school@det.nsw.edu.au)

**Website:** <http://www.lansvalee-p.schools.nsw.edu.au/>



## UNIFORM ORDER FORM

Please indicate below the size and quantity of the items required and calculate the total.

Payments can be made by any of the following methods:

- Parent Online Payment (POP instructions on the back of this form)
- Correct cash in an envelope

Please send your completed order form to school with your child, alternatively please e-mail the form to

[Lansvalee-p.school@det.nsw.edu.au](mailto:Lansvalee-p.school@det.nsw.edu.au)

ITEM	COST	SIZE	QUANTITY	TOTAL
		4 6 8 10 12 14 16 M L		
School Dress	\$45:00			
Skort	\$20:00			
Short Sleeve Polo	\$25:00			
Long Sleeve Polo	\$30:00			
Shorts (Boys)	\$20:00			
Jacket	\$30:00			
Sports Shorts	\$20:00			
Sports Shirt	\$25:00			
Tracksuit	\$70:00			
Tracksuit Jacket	\$40:00			
Tracksuit Pants	\$30:00			
Hat/Cap	\$20:00			
Excursion Bag	\$15:00			
School Bag	\$35:00			
Library Bag	\$25:00			
			<b>TOTAL</b>	<b>\$</b>

Child's Name \_\_\_\_\_ Class \_\_\_\_\_ Date \_\_\_\_\_

Parent/Carer Name \_\_\_\_\_ Signature \_\_\_\_\_ Phone \_\_\_\_\_

Payment Method     POP Payment     Cash     Credit Card

Visa        Mastercard        Card Number \_\_\_\_\_ / \_\_\_\_\_ / \_\_\_\_\_ / \_\_\_\_\_

Expiry \_\_\_\_\_ / \_\_\_\_\_    CCV \_\_\_\_\_

LANSVALE EAST PUBLIC SCHOOL  
 RIVERSIDE ROAD LANSVALE NSW 2166  
 TEL: 9728 1278 FAX: 9728 2339  
 EMAIL: [lansvalee-p.school@det.nsw.edu.au](mailto:lansvalee-p.school@det.nsw.edu.au) WEB: [www.lansvalee-p.school@det.nsw.edu.au](http://www.lansvalee-p.school@det.nsw.edu.au)

**Lansvale East Public School**

**21 Riverside Rd, Lansvale East NSW 2166**

**Phone: (02) 9728 1278 Email: [lansvalee-p.school@det.nsw.edu.au](mailto:lansvalee-p.school@det.nsw.edu.au)**

**Website: <http://www.lansvalee-p.school@det.nsw.edu.au>**



# School Community Charter

 **Collaborative. Respectful. Communication.**

The following School Community Charter outlines the responsibilities of parents, carers, educators and school staff in NSW public schools to ensure our learning environments are collaborative, supportive and cohesive.

We treat each other with **respect**

## What our schools provide

NSW public schools work to create positive environments for students, staff and the entire school community that support student learning. We strive to ensure that every student is known, valued and cared for.

The best education happens when parents and schools work together.

The School Community Charter aligns with the NSW Department of Education Strategic Plan 2018 - 2022.



## Positive environments

It is important that our NSW public schools are positive environments and that parents and carers are kept informed of students' progress and school announcements.

Parents and carers can expect:

- To be welcomed into our schools to work in partnership to promote student learning.
- Communication from school staff will be timely, polite and informative.
- Professional relationships with school staff are based on transparency, honesty and mutual respect.
- To be treated fairly. Tolerance and understanding are promoted as we respect diversity.

We **prioritise** the wellbeing of all students and staff

**Unsafe behaviour** is not acceptable in our schools

We work **together** with the school

**Ensuring respectful learning environments for all members of NSW Public Schools communities.**

© NSW Department of Education

**Lansvale East Public School**

21 Riverside Rd, Lansvale East NSW 2166

Phone: (02) 9728 1278 Email: [lansvalee-p.school@det.nsw.edu.au](mailto:lansvalee-p.school@det.nsw.edu.au)

Website: <http://www.lansvalee-p.schools.nsw.edu.au/>



We create **collaborative** learning environments

We all play **our part**

We work **in partnership** to promote student learning

### Communicating with our schools

Our staff will find a time to talk to you when they can give you their full attention. Please remember that while our staff are in class or dealing with other matters, they may not be available to answer your questions immediately.

Our schools and communities will make sure that written communication is appropriate, fair and easy to read. We encourage you to use email and social media appropriately to connect with your school and stay up-to-date with up-coming events in the school community.

Our guide for parents, carers and students provides useful information about the complaints process: [education.nsw.gov.au/about-us/rights-and-accountability/complaints-compliments-and-suggestions/guide-for-parents-carers-and-students](http://education.nsw.gov.au/about-us/rights-and-accountability/complaints-compliments-and-suggestions/guide-for-parents-carers-and-students)

### Respectful communication is a right

In all workplaces people have the right to feel respected. Unacceptable and offensive behaviour has no place in our school communities.

To ensure the wellbeing of students, staff and the community in our schools, steps will be taken to address unacceptable behaviour. This may include restricting contact with the school community or, in more serious cases, referral to NSW Police.

### Unacceptable behaviour may include but is not limited to:

- Aggressive or intimidating actions, such as violence, threatening gestures or physical proximity.
- Aggressive or intimidating language, including the use of obscenities, making sexist, racist or derogatory comments or using a rude tone.
- Treating members of the school community differently due to aspects such as their religion or disability.
- Inappropriate and time wasting communication.



**Collaborative.  
Respectful.  
Communication.**

### School Community Charter

[education.nsw.gov.au](http://education.nsw.gov.au)

**Lansvale East Public School**

21 Riverside Rd, Lansvale East NSW 2166

Phone: (02) 9728 1278 Email: [lansvalee-p.school@det.nsw.edu.au](mailto:lansvalee-p.school@det.nsw.edu.au)

Website: <http://www.lansvalee-p.schools.nsw.edu.au/>