



LEPS Community News

- From the Principal's desk
- 5-6S News
- 5-6K News
- Attendance Student Awards
- PBL News
- Notes sent home
- Community News
- Uniform Price List

Dates to remember...

International Day of the World's Indigenous People	Tuesday 9 August
International Youth Day	Friday 12 August

From the Principal's Desk

Dear Parents and Carers,

Thank you for celebrating Education Week with us last week. It was wonderful to welcome parents and carers into our open classrooms and Assembly on Thursday. The students and teachers had a week of fun activities; Science Day, Students attended an online virtual classroom with a Paralympian, including students coming to school dressed as a future career they'd like to pursue. We thank our wonderful staff for their organisation of a great week and our amazing students for their participation.



COVID-smart measures

A number of COVID-smart measures that have been developed with NSW Health to minimise transmission and keep schools open. These key measures include:

- strongly encouraging mask-wearing indoors for all students and staff
- rapid antigen testing (RAT) of students and staff who have COVID-19 symptoms or are identified as household/close contacts
- strongly recommending staff and students keep up-to-date with their vaccinations
- maximising natural ventilation
- requiring mask wearing for staff working with students who are at greater risk of serious illness should they contract COVID-19 in schools for specific purpose (SSPs), support units and some mainstream classrooms
- encouraging regular hand washing
- boosting enhanced day cleaning of schools
- assessing risk and applying appropriate safeguards across activities and events

From the Principal's Desk Continued...

Road Safety Around the School Mornings and afternoons

Both the morning and afternoon are extremely busy for both cars and pedestrians around the school grounds. To ensure the students, parents/carers and staff stay safe we need to all comply with road rules as well as watch out for pedestrians.

Please ensure that you park your car correctly.

- Turn off the engine and then assist your child/ren in getting out of the vehicle. Children do not have good peripheral vision and do not fully understand the safety issues around moving vehicles. Our peripheral vision is **our side vision, the ability to see things outside of our direct line of sight**. You use peripheral vision when you see something out of the corner of your eye.
- Ensure your child is sitting on the side of the curb where they will be exiting the car, not on the side of passing traffic.
- Never park on our neighbours driveways.
- Do not double park because you are running late or because you are in a hurry. Safety is priority.

Please click on the link below to read some more information about staying safe when dropping off and picking up students at school.

<https://roadsafety.transport.nsw.gov.au/downloads/keeping-our-kids-safe-around-schools.pdf>

Kindergarten 2023

If you have a child who will turn 5 years old before July 2023, please call the office on 9728 1278 to start the enrolment process. If you know any friends or family who live in the area, please ask them to call the office to start the enrolment process.

Attendance Matters



THIS WEEK IN 5-6S



SCIENCE DAY

Students from 5-6S participated in a science experiment alongside 5-6K. We used clear balloons to watch the reaction between bi-carbonate soda mixed with white vinegar.

Everyone had activated their scientific mind, thinking about what we observed and what we could do better next time we do this experiment.

Some of us found the experiment a bit challenging, but we all enjoyed it very much.



STAYING HEALTHY

Our focus as a class is to maintain a healthy lifestyle and staying active. 5-6S has been taking part in fitness activity within the classroom. Students have begun taking it upon themselves to challenge and improve their health.



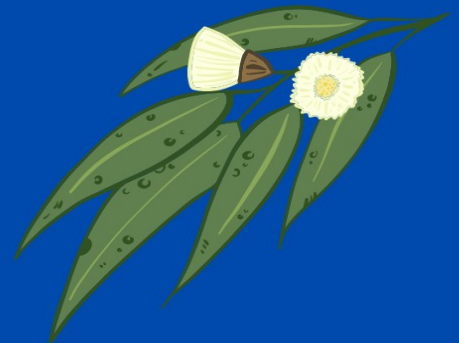
5-6K Class News

NULUNGU DREAMING

5-6K students attended an excursion to learn about Aboriginal history, culture and traditions

We engaged in 3 activities; boomerang throwing, learnt about traditional music and dance.

The highlight of the excursion was their dance to traditional music with face painted with ochre.





LEPS Attendance Awards

The Attendance Awards recognises students and classes with excellent school attendance. It reminds students and the school community that attendance matters.

Students with 100% Attendance in Semester 1, 2022:

- **Kaden Nguyen** (K-1-2DT)
- **Jonathan Giang** (1-3C)
- **Abbas Al Hurz** (4-5E)
- **Reynan Lacra** (4-5E)
- **Rockie Lacra** (5-6K)
- **Lilianne Alnimry** (5-6K)
- **Steven Phommasouk** (5-6S)

Perfect Attendance!



Best Class Attendances for Term 3 Weeks 2-3:

- **Class 2-4P** = 100%
- **Class 4-5E** = 92%



LEPS PBL Gotcha Awards

The *Positive Behaviour for Learning* (PBL) 'Gotcha Awards' are presented to students who follow the PBL Playground Rules in being **Responsible**, **Respectful** and **Resilient**.

The Gotcha Award Recipients for Term 3 Week 3, 2022 are:

Award Recipients	For being Responsible	For being Respectful	For being Resilient
	Scarlett Jimenez (3-4T)	(Dragon Hoang 5-6S)	Hugh Do (3-4T)
	Reynan Lacra (4-5E)	(Selena Bokay K-1-2DT)	Bernard Luu (1-3C)





PBL NEWS

Be Respectful, Be Responsible, Be Resilient

5-6K



Great teamwork!



5-6S



Keep it up!

Fantastic work!



52



Shaina demonstrating being respectful by following teacher instructions.



Reflections

- Students who attend reflection more than 5 times within 1 term for the same behaviour will be unable to attend the whole school green event occurring end of every term.
- However an alternate activity based on the PBL rules/expectations will be organised for those students.

Gotcha!

Student

Teacher

Date

Class Merit



Responsible
Respectful
Resilient

Student

Teacher

Date

PBL Awards

Students who follow school rules will be rewarded regularly through the school merit system.



PBL Update

Thursday 4 August 2022

Dear Parent/Caregiver,

Positive Behaviour for Learning (PBL) provides students and staff at Lansvale East Public School with a set of rules - **'Be Responsible'**, **'Be Respectful'** and **'Be Resilient'**, which underpin a positive and proactive system for defining, teaching and supporting appropriate student behaviours at school. PBL develops a positive, safe and supportive school climate which maximises student learning and growth.

Following a review by the school's PBL Committee, the reflection procedure has been reviewed and updated. Students whose behaviour does not meet the PBL expectations attend PBL reflection during lunchtime where they are encouraged to reflect on their actions with the goal of self-improvement.

Students who follow the PBL expectations will be rewarded and acknowledged through our school merit system, which includes a 'Green Event' where students who comply with the PBL Rules during the term are invited to celebrate. A student who has served **more than 5 reflections** during the school term will not be able to participate in the Green Event, scheduled at the end of the term. An alternative activity will be organised and students will be with an executive or PBL committee member to support positive behaviour for future attendance.

Thank you for your cooperation and your support in reinforcing the school's PBL rules.



Mrs S. Pinto
PBL Coordinator

Ms A. Droulias Ms N Tran
PBL Committee

Mr T Khoo
Assistant Principal C&I

Ms E.Ortega
Principal

LANSVALE EAST PUBLIC SCHOOL
RIVERSIDE ROAD LANSVALE NSW 2166
TEL: 9728 1278 FAX: 9728 2339
EMAIL: lansvalee-p.school@det.nsw.edu.au WEB: www.lansvalee-p.school@det.nsw.edu.au



Autism Advisory & Support Service

The Autism Advisory and Support Service (AASS) provides a range of services to support, advocate, help, educate and guide families who have a family member with Autism as well as the greater community.

Relying heavily on donations and grants, AASS have proudly accomplished the opening of an Autism Community House in Liverpool, Individual and group therapy, School outreach, Professional Development, Support Groups, Social Groups, Parent Workshops and lots more. We understand firsthand, how difficult it can be navigating a diagnosis, services, education and social events for our beautiful children

Ph: 9601 2844

Email: info@aass.org.au

Web: www.aass.org.au

Lansvale East Public School

21 Riverside Rd, Lansvale East NSW 2166

Phone: (02) 9728 1278 Email: lansvalee-p.school@det.nsw.edu.au

Website: <http://www.lansvalee-p.schools.nsw.edu.au/>



Autism Advisory and
Support Service

"Empowering children with autism
and their families through knowledge & support"

Arabic Carers Support Group Carers Week

**Support for parents and carers of children/individual with a diagnosis of
Autism Spectrum Disorder, facilitated by our Arabic Support Worker**

Caring for a child or individual with Autism can be difficult and isolating at times, but it does not need to be. AASS parent and carers support group facilitates people coming together in an inclusive environment. Facilitated by a mother of a child with Autism it allows attendees to talk and share experiences with each other in a non-judgemental and confidential setting.

Time: 10:30am - 12.30pm

Location: Venue to be advised upon RSVP

RSVP: lina@aass.org.au

Please note:

You need to be a member of the club (tba), or become one to enter the premises

Dates for Term 3, 2022

~~Tuesday; 19th July~~

Tuesday; 2nd August

Tuesday; 16th August (NO Carer's GROUP)

Tuesday; 23rd August

Tuesday; 6th September

Tuesday; 20th September

For more information please call (02) 9601 2844

Autism Advisory and Support Service (AASS) has a range of therapists including:
Speech, Music, Art, Occupational Therapist, and Psychologists.

Autism Advisory and Support Service, 88 Memorial Ave, Liverpool NSW 2170 Phone: (02)9601 2844
Fax: (02)9601 1339 Email: info@aass.org.au Web: www.aass.org.au



**Autism Advisory and
Support Service**

**"Empowering children with autism
and their families through knowledge & support"**

Parent/ Carers Support Group Carers Week

**Support for parents and carers of children/individual with a diagnosis of
Autism Spectrum Disorder**

Caring for a child or individual with Autism can be difficult and isolating at times, but it does not need to be. AASS parent and carers support group facilitates people coming together in an inclusive environment. Facilitated by a mother of a child with Autism it allows attendees to talk and share experiences with each other in a non-judgemental and confidential setting.

Time: 10:30am - 12.30pm

Location: Moorebank Sports Club, 230 Heathcote Rd, Hammondville

RSVP: lina@aass.org.au

Please note:

You need to be a member of Moorebank Sports Club or become one to enter the premises

Dates for Term 3, 2022

~~**Tuesday; 12th July, School Holidays No Parent Group**~~

Tuesday; 9th August

Tuesday; 13th September

For more information please call (02) 9601 2844

Autism Advisory and Support Service (AASS) has a range of therapists including:
Speech, Music, Art, Occupational Therapist, and Psychologists.

Autism Advisory and Support Service, 88 Memorial Ave, Liverpool NSW 2170 Phone: (02)9601 2844
Fax: (02)9601 1339 Email: info@aass.org.au Web: www.aass.org.au

Living on the Spectrum



SATURDAY
10TH SEPT 2022
Free Entry
REGISTER HERE

ART WORKSHOP

FACE PAINTING

First Responders

Rides & Games

Ride pass can be purchased on the day

Food Trucks



OPEN MIC TALENT SHOW

For anyone with ASD
Registration required to enter.

email: lisa@aass.org.au to register

To join us as a

- Stall Holder
- Food Vendor
- Sponsor
- Volunteer

Register Here

SPECIAL GUEST APPEARANCES

GWS Giants with AFL Fun & Games

SENSORY ZONES

Including a designated Adults with ASD area

PETTING ZOO



Cathy Freeman Park
Sydney Olympic Park

10am - 4pm

Service Provider Information Stalls



AUTISM ADVISORY & SUPPORT SERVICE - E: INFO@AASS.ORG.AU | CALL 96012844

Lansvale East Public School

21 Riverside Rd, Lansvale East NSW 2166

Phone: (02) 9728 1278 Email: lansvalee-p.school@det.nsw.edu.au

Website: <http://www.lansvalee-p.schools.nsw.edu.au/>



UNIFORM ORDER FORM

Please indicate below the size and quantity of the items required and calculate the total.

Payments can be made by any of the following methods:

- Parent Online Payment (POP instructions on the back of this form)
- Correct cash in an envelope

Please send your completed order form to school with your child, alternatively please e-mail the form to

Lansvalee-p.school@det.nsw.edu.au

ITEM	COST	SIZE	QUANTITY	TOTAL
		4 6 8 10 12 14 16 M L		
School Dress	\$45:00			
Skort	\$20:00			
Short Sleeve Polo	\$25:00			
Long Sleeve Polo	\$30:00			
Shorts (Boys)	\$20:00			
Jacket	\$30:00			
Sports Shorts	\$20:00			
Sports Shirt	\$25:00			
Tracksuit	\$70:00			
Tracksuit Jacket	\$40:00			
Tracksuit Pants	\$30:00			
Hat/Cap	\$20:00			
Excursion Bag	\$15:00			
School Bag	\$35:00			
Library Bag	\$25:00			
			TOTAL	\$

Child's Name _____ Class _____ Date _____

Parent/Carer Name _____ Signature _____ Phone _____

Payment Method ☐ POP Payment ☐ Cash ☐ Credit Card

Visa ☐ Mastercard ☐ Card Number _____ / _____ / _____ / _____

Expiry _____ / _____ CCV _____

LANSVALE EAST PUBLIC SCHOOL
RIVERSIDE ROAD LANSVALE NSW 2166
TEL: 9728 1278 FAX: 9728 2339
EMAIL: lansvalee-p.school@det.nsw.edu.au WEB: www.lansvalee-p.school@det.nsw.edu.au

Lansvale East Public School

21 Riverside Rd, Lansvale East NSW 2166

Phone: (02) 9728 1278 Email: lansvalee-p.school@det.nsw.edu.au

Website: <http://www.lansvalee-p.schools.nsw.edu.au/>



PARENT ONLINE PAYMENTS

Using Westpac QuickWeb

Dear Parents,

Online payments are accessed through the home page of the school's website:

www.lansvalee-p.school@det.nsw.edu.au

The school website will have an option on the menu bar "Make a Payment".

When you click on this you will be taken straight to the Westpac QuickWeb page.

Payers will complete the necessary details, some of which are mandatory before confirming the payment details and completing the payment. A receipt can be printed from the payment page.

The payment screens are:

- Entering payment details
- Entering credit card details
- Confirmation of payment details and
- Online payment receipt

Payments can be made by Visa or MasterCard credit or debit card only. The school does not see any details of your card.

Please ensure you enter the child's correct name, class and details of what you are paying for. These details are necessary so that the payment is credited to the correct child.

All payments made before 6.00pm each day will be received at the school the next day. Payment after 6.00pm will not be received by the school for two days.

LANSVALE EAST PUBLIC SCHOOL
RIVERSIDE ROAD LANSVALE NSW 2166
TEL: 9728 1278 FAX: 9728 2339
EMAIL: lansvalee-p.school@det.nsw.edu.au WEB: www.lansvalee-p.school@det.nsw.edu.au

Lansvale East Public School

21 Riverside Rd, Lansvale East NSW 2166

Phone: (02) 9728 1278 **Email:** lansvalee-p.school@det.nsw.edu.au

Website: <http://www.lansvalee-p.schools.nsw.edu.au/>

School Community Charter

 **Collaborative. Respectful. Communication.**

The following School Community Charter outlines the responsibilities of parents, carers, educators and school staff in NSW public schools to ensure our learning environments are collaborative, supportive and cohesive.

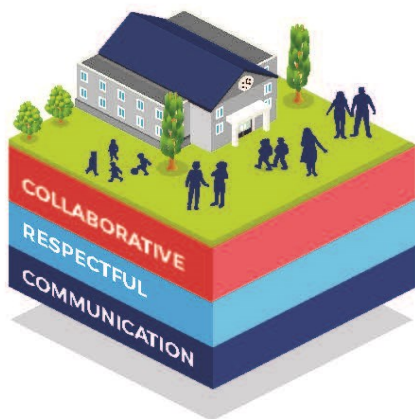
We treat
each other
with
respect

What our schools provide

NSW public schools work to create positive environments for students, staff and the entire school community that support student learning. We strive to ensure that every student is known, valued and cared for.

The best education happens when parents and schools work together.

The School Community Charter aligns with the NSW Department of Education Strategic Plan 2018 – 2022.



Positive environments

It is important that our NSW public schools are positive environments and that parents and carers are kept informed of students' progress and school announcements.

Parents and carers can expect:

- To be welcomed into our schools to work in partnership to promote student learning.
- Communication from school staff will be timely, polite and informative.
- Professional relationships with school staff are based on transparency, honesty and mutual respect.
- To be treated fairly. Tolerance and understanding are promoted as we respect diversity.

We
prioritise
the wellbeing
of all students
and staff

**Unsafe
behaviour**
is not acceptable
in our schools

We work
together
with the
school

Ensuring respectful learning environments for all members of NSW Public Schools communities.

© NSW Department of Education



We create
collaborative
learning
environments

We
all play
our part

We work
in partnership
to promote
student
learning

Communicating with our schools

Our staff will find a time to talk to you when they can give you their full attention. Please remember that while our staff are in class or dealing with other matters, they may not be available to answer your questions immediately.

Our schools and communities will make sure that written communication is appropriate, fair and easy to read. We encourage you to use email and social media appropriately to connect with your school and stay up-to-date with up-coming events in the school community.

Our guide for parents, carers and students provides useful information about the complaints process:

education.nsw.gov.au/about-us/rights-and-accountability/complaints-compliments-and-suggestions/guide-for-parents-carers-and-students

Respectful communication is a right

In all workplaces people have the right to feel respected. Unacceptable and offensive behaviour has no place in our school communities.

To ensure the wellbeing of students, staff and the community in our schools, steps will be taken to address unacceptable behaviour. This may include restricting contact with the school community or, in more serious cases, referral to NSW Police.



Unacceptable behaviour may include but is not limited to:

- Aggressive or intimidating actions, such as violence, threatening gestures or physical proximity.
- Aggressive or intimidating language, including the use of obscenities, making sexist, racist or derogatory comments or using a rude tone.
- Treating members of the school community differently due to aspects such as their religion or disability.
- Inappropriate and time wasting communication.



Collaborative.
Respectful.
Communication.

School Community Charter

education.nsw.gov.au

Lansvale East Public School

21 Riverside Rd, Lansvale East NSW 2166

Phone: (02) 9728 1278 **Email:** lansvalee-p.school@det.nsw.edu.au

Website: <http://www.lansvalee-p.schools.nsw.edu.au/>