



LEPS Community News

- From the Principal's desk
- K-1-2DT News
- 4-5T News
- Notes sent home
- Community News
- Uniform Price List

Book Week	Monday 22 August to Friday 26 August
Athletics Carnival	Wednesday 24 August
Book Parade & Whole School Assembly	Thursday 25 August 9:15am under the Cola

From the Principal's Desk

Dear Parents and Carers,

It is that time of the year that we begin to get excited about the Book Week Parade and looking for a costume from one of our favourite stories. We encourage all students to come dressed in a costume and to be creative with their choice. Remembering that often the best costumes are by exploring the items we have at home that have no expenditure. We also remind students and families with the character chosen to be age appropriate. If students are unsure, ask them to speak with their classroom teacher for ideas. We also welcome toddlers to dress up and join the parade with their sibling on Thursday 25 August under the cola from 9:15 am for an assembly and then the book parade.

Community Liaison Officers

Mr Al-Saedi and Mrs Huynh are here to support our families with any questions you may have, please call on 9728 1278 or request a time at the front office. We also encourage you to join us at the Parent Café this Thursday from 8:30 am in the hall for an opportunity to speak to other parents, grab a cuppa and have a yarn.

Kindergarten 2023

If you have a child who will turn 5 years old before July 2023, please call the office on 9728 1278 to start the enrolment process. If you know any friends or family who live in the area, please ask them to call the office to start the enrolment process.

Before and After School Care—Big Childcare

Lansvale East Public School worked for approximately three years to obtain a before and after school care. With your support and completion of numerous surveys we were able to acquire a much needed resource for our school to support our families. To maintain the support, we are reaching out to all our families that would benefit from this and during the school holidays with vacation care to sign up and make use of the wonderful facility set up in the hall. Please come to the office for an information pack or contact Big Childcare directly on: 0428 776 507 or lansvaleeast@bigchildcare.com

Have a great week.



K-1-2DT NEWS



Buddy System

This term in K-1-2DT, we have decided to buddy up with 5-6K! Every student has a buddy who can help them when needed on the playground.

Every week, 5-6K will be visiting our class to help their buddy during handwriting lessons.

K-1-2DT have enjoyed having 5-6K in the classroom as they have been great role models.

Education Week

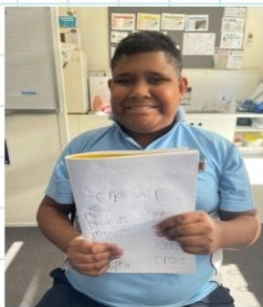
Lansvale East Public School celebrated Education Week on the 4th of August. All students had the amazing opportunity to join a webinar with Australian Paralympian, Monique Murphy. They learnt about resilience and empathy, and how to overcome challenges.

We also celebrated Science Day where all students became scientists doing a variety of fun, hands on science experiments!





4-5T



ENGLISH

IN SOUNDWAVES, 4-5T HAVE BEEN WORKING TO INDEPENDENTLY BRAINSTORM AND SEGEMENT WORDS WITH THE PHONEME AND GRAPHEME OF THE WEEK.

GEOGRAPHY

IN GEOGRAPHY, 4-5T ARE LEARNING ABOUT ENVIRONMENTS AND CULTURES. STUDENTS ARE LEARNING TO RESEARCH ABOUT AUSTRALIA'S LAND, ANIMALS, PLANTS AND PEOPLES.



CAPA - DANCE

EVERY FRIDAY, 4-5T AND 4-5E ARE JOINING TOGETHER TO PARTICIPATE IN DANCE LESSONS. STUDENTS HAVE LEARNT THE HEEL AND TOE POLKA AND ARE NOW WORKING WITH FOOTSTEPS ON A DANCE TOGETHER.





2022 K-6 Athletics Carnival

Thursday, 11 August 2022

Dear Parents and Caregivers,

Lansvale East Public School will be holding our Athletics Carnival Wednesday, 24 August 2022. We will be holding the event at school. All students are required to participate in their age specific events. The events will run from 9:20am – 1:30pm with regular lunch and recess breaks.

Families are invited to attend, please bring a chair or blanket and a hat. If attending, please do not take photos of students unless they are your own child.

Students need to wear their sports uniform, appropriate running shoes and hat, and bring a bottle of water.

9:20am-11:00am – Running Races

11:50am – 1:30am – Athletics Events

Should there be a reason to postpone on the day due to the weather a final decision will be made by 8:30am. Please call the school office on 9728 1278 after this time if in doubt.

If there is any medical reason that your child is unable to participate in their age events, please send a note to your child's class teacher.

If your child has asthma, can you please fill out the slip below and return it to the office. Students with asthma will wear a badge on the day to be easily identified.

Mr S. Diep
Rel. Assistant Principal
Miss A. Droulias
Sports Co-ordinator

Ms E. Ortega
Principal



2022 K-6 Athletics Carnival

My child _____ of class _____ has mild/moderate/severe asthma.

Medical Requirements:

Parent/Carer (print name)

Parent/Carer (Signature)

Date

**IF YOUR CHILD DOES NOT HAVE ASTHMA OR A MEDICAL CONDITION YOU DO NOT NEED TO
BRING THE PERMISSION NOTE**

LANSVALE EAST PUBLIC SCHOOL
RIVERSIDE ROAD LANSVALE NSW 2166
TEL: 9728 1278 FAX: 9728 2339
EMAIL: lansvalee-p.school@det.nsw.edu.au WEB: www.lansvalee-p.school@det.nsw.edu.au

Lansvale East Public School

21 Riverside Rd, Lansvale East NSW 2166

Phone: (02) 9728 1278 Email: lansvalee-p.school@det.nsw.edu.au

Website: <http://www.lansvalee-p.schools.nsw.edu.au/>



Forces in Action Kindergarten - Stage 1 Incursion 31st August 2022

Thursday 18 August 2022

Dear Parent/Caregiver,

Early Stage 1 and Stage 1 have been given the opportunity to engage in an incursion supporting their learning within the Science Curriculum. Students will participate in a range of educational activities including gyroscopes and many other activities related to magnetic forces, buoyancy and air resistance. The activities will be conducted through a 90 minute workshop where students will:

- discuss forces in the familiar context of land, air and sea vehicles.
- examine the effects of friction on the movement of toy vehicles, and consider factors that must be controlled in order to perform a fair test.
- explore the movement of gyroscopes, and use a variety of gyroscopes including precision, light up and rings.
- predict the result of a simple experiment on air resistance, then test that prediction.
- observe a fun demonstration of how fast-moving air creates a force and propels an object forward.
- explore magnet force with magnets of varying strengths.
- predict, then test in groups whether an object will float or sink. Observe the difference in floating and sinking in fresh and saltwater.

The key concepts of the incursion will cover the following syllabus outcomes:

- Observes the way objects move and relates changes in motion to push and pull forces (STe-5PW-ST)
- Observes, questions and collects data to communicate ideas (STe-1WS-S)
- Investigates how forces and energy are used in products (ST1-9PW-ST)
- Observes, questions and collects data to communicate and compare ideas (ST1-1WS-S)

When: Wednesday 31st August 2022

What to wear: Full school sports uniform with enclosed shoes.

Cost: \$20.00 (Payable by Monday 29th August)

Staff members with emergency care and CPR training are accompanying the students. A risk assessment of this activity has been undertaken and all necessary actions have been approved by the Principal. Students who are of concern because of recent, unsafe behaviours at school, may be excluded from this excursion. Parents will be notified if staff are considering excluding any particular student from attending.

Miss D. Tang & Miss M. Agostini
Excursion Organisers/Classroom Teachers

Ms E. Ortega
Principal

-----Please detach and return by **Monday 29th August** -----



Consent Form Forces in Action Incursion

I give consent for to my child _____ (student name) from class _____ to attend the Forces in Action Incursion on Wednesday 31 August 2022.

I have enclosed \$20.00 cash ☐

Payment online receipt number _____

My child has the following additional needs (Please specify):

Parent / Caregiver Signature: _____

Date: _____

PERMISSION NOTE MUST BE RETURNED TO THE OFFICE BY Monday 29th August 2022.

LANSVALE EAST PUBLIC SCHOOL
RIVERSIDE ROAD LANSVALE NSW 2166
TEL: 9728 1278 FAX: 9728 2339

EMAIL: lansvalee-p.school@det.nsw.edu.au WEB: www.lansvalee-p.school@det.nsw.edu.au



Community Walk to Chipping Norton 2022

18 August 2022

Dear Parent/Caregiver,

5-6K students have been given the amazing opportunity to attend a Community Walk to Chipping Norton Lake. On **7 September 2022**, students will participate in a range of engaging educational activities including the viewing of our local flora, fauna and painting using a canvas linking to Creative Arts and Geography – Factors that Shape Places outcomes they are learning this Term.

When: 7 September 2022

Students to depart school from: 9:30PM and return by 2:30PM.

What to bring: Small backpack with hat, bottle, lunch and recess. Please write your child's name on their bag. (Please do not bring money as we will not be purchasing food or items)

What to wear: Full school sports uniform with school hat.

Cost: \$0.00 (FREE, all costs will be covered)

Staff members with emergency care and CPR training are accompanying the students. A risk assessment of this activity has been undertaken and all necessary actions have been approved by the Principal. Students who are of concern because of recent, unsafe behaviours at school, may be excluded from this excursion. Parents will be notified if staff are considering excluding any particular student from attending.

Mr. S Diep
R. Assistant Principal Stage 2 & 3
Miss. A Droulias
5-6K Classroom Teacher

Ms E.Ortega
Principal

----- Please detach -----



Community Walk at Chipping Norton Lake

I consent for my child _____ (Student name) from Class 5-6K to attend the Community Walk Excursion on _____ Date.

My child has the following additional needs (Please specify):

Parent / Caregiver Signature: _____ Date: _____

PERMISSION NOTE MUST BE RETURNED BY TUESDAY 30 AUGUST 2022.

LANSVALE EAST PUBLIC SCHOOL
RIVERSIDE ROAD LANSVALE NSW 2166
TEL: 9728 1278 FAX: 9728 2339

EMAIL: lansvalee-p.school@det.nsw.edu.au WEB: www.lansvalee-p.school@det.nsw.edu.au



Pyjama Day

18 August 2022

Dear Parents and Carers,

The Year 6 students will be running a '**Pyjama Day**' on **6 September 2022** to help raise funds for the Year 6 Farewell. The SRC encourages everyone to come to school with their pyjamas. For a gold coin donation, students are permitted to come to school in their warm pyjamas.

The Year 6 Students will also be selling ice blocks and snow cones on this day during lunch and recess. Ice blocks will cost \$1 each and snow cones will cost \$2.50 each. All funds raised will go towards the Year 6 Farewell.

Please remember that students need to wear appropriate sun safe warm clothing, including footwear (enclosed shoes) and a hat. **No slogans are allowed on the clothing items.**

Mr Diep
R. Assistant Principal Stage 2 & 3

Ms E. Ortega
Principal

LANSVALE EAST PUBLIC SCHOOL
RIVERSIDE ROAD LANSVALE NSW 2166
TEL: 9728 1278 FAX: 9728 2339

EMAIL: lansvalee-p.school@det.nsw.edu.au WEB: www.lansvalee-p.school@det.nsw.edu.au

Healthy Family Bulletin

Tips to shop healthy and save money

With the cost of living rising, it can feel like a real challenge to maintain a healthy and balanced trolley at the shops without breaking the bank. The good news is there are a lot of handy tricks to cut costs while still purchasing products from the five core food groups recommended for a healthy diet (vegetables, fruit, grains and cereals, meat/meat alternatives and dairy/dairy alternatives). The Cancer Council has put together some creative tips to shop healthy and save money including buying in season, making healthy swaps, planning your meals and more. For the full article, [CLICK HERE](#)



Physical Activity



Being active helps us stay healthy. Check out these tips to get kids active:

- Toddlers can walk instead of using a stroller.
- Walk, ride a bike or scooter to school (or park and walk).
- Choose toys that help kids move.
- Limit screen time each day and choose active play instead.
- Encourage kids to try a range of sports.
- Show your kids you like being active too.
- Outdoor play is best - keep indoors activities for when it's hot or raining.



For more information, click [here](#).



Lansvale East Public School

21 Riverside Rd, Lansvale East NSW 2166

Phone: (02) 9728 1278 Email: lansvalee-p.school@det.nsw.edu.au

Website: <http://www.lansvalee-p.schools.nsw.edu.au/>

Healthy Family Bulletin

Screen time



raisingchildren.net.au
the australian parenting website

Family technology plan: what is it?

A family technology plan is a set of rules that helps everyone in your family balance and manage technology use.

It might include guidelines about where and when you use technology and what you use it for.

Your family technology plan will depend on your family situation, and it will probably change as your children get older and your family needs change.

Find more information [here](#).

Breastfeeding

Returning to work does not mean that you can no longer breastfeed your baby.

Continuing to breastfeed can be something special for you and your baby to share, as you both get used to a new routine. For more information on preparing your return to work and expressing breastmilk, click [here](#).

Go to the Australian Breastfeeding Association [website](#) for more details.



Breastfeeding
and returning
to work



Lansvale East Public School

21 Riverside Rd, Lansvale East NSW 2166

Phone: (02) 9728 1278 Email: lansvalee-p.school@det.nsw.edu.au

Website: <http://www.lansvalee-p.schools.nsw.edu.au/>

Healthy Family Bulletin



Not sure what to do if your child gets sick this winter?

KNOW THE FACTS THIS WINTER



Most respiratory illnesses can be managed safely at home. Plenty of fluids, rest and gentle pain relief will help keep your child comfortable while they recover.

- If your child isn't getting better or you are still concerned, contact your GP.
- If your GP is unavailable, you can call HealthDirect 24/7 for expert advice on 1800 022 222.
- If your child experiences serious symptoms like difficulty breathing, call Triple Zero (000) immediately.



- For more details, click [here](#).

COVID-19 reinfection period reduced from 12 weeks to four weeks

Had COVID-19? Change to testing and self-isolation advice



LEARN MORE



People who have previously had COVID-19 are asked to test for COVID-19 after four weeks since their isolation ended if they have symptoms and to follow the relevant health advice if they test positive.

People who test positive again will be reported and managed as new cases.

If it has been more than four weeks since you had COVID-19 and completed your self-isolation, you can become a household or close contact.

Anyone who becomes a household or close contact must follow the [NSW Health Household and Close Contact Guidelines](#).

There have been no changes to when you should have your next COVID-19 vaccination after infection, this is still 3 months.



Lansvale East Public School

21 Riverside Rd, Lansvale East NSW 2166

Phone: (02) 9728 1278 Email: lansvalee-p.school@det.nsw.edu.au

Website: <http://www.lansvalee-p.schools.nsw.edu.au/>

Live Life Well @ School

What's Happening

August 2022

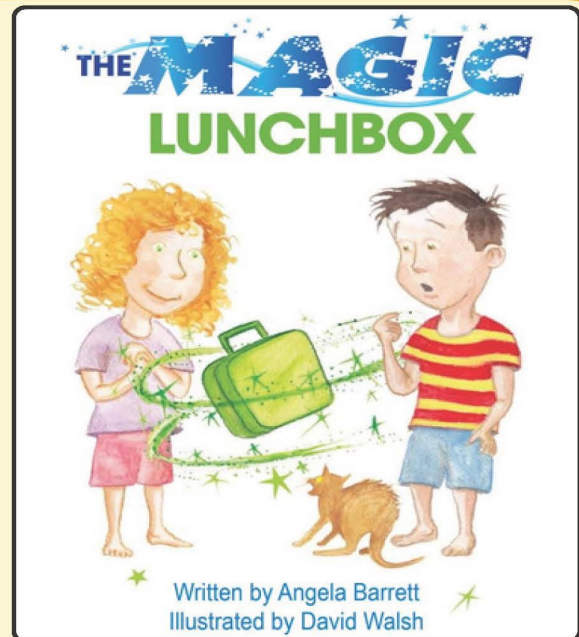
Children's Book Week: 20-26 August

Schools and libraries spend a week celebrating books and Australian children's authors and illustrators during this time.

The Magic Lunchbox is a captivating, fun story about packing a healthy lunchbox. It supports children of this age group to understand 'everyday' healthy food choices and "the magic made, when you put good food inside".



Check out the audio book [here](#).



Healthy Bones Action Week: 23-29 August



People are encouraged to think about their bone health during this week. Primary school is a crucial time for Aussie kids to build strong bones for life and ensure their daily routine includes the three steps to maintaining good bone health. Find resources for each stage [here](#).



Lansvale East Public School

21 Riverside Rd, Lansvale East NSW 2166

Phone: (02) 9728 1278 Email: lansvalee-p.school@det.nsw.edu.au

Website: <http://www.lansvalee-p.schools.nsw.edu.au/>

Fruit & Veg Month: 29 August - 23 September

This month is an event for NSW primary schools.

The celebration is managed by the Healthy Kids Association and funded by NSW Health. The aim is to encourage children and their families to eat more fruit and vegetables.

Growing, exploring and sharing local fruit and vegetables is important for our health. The 2022 theme is Building Fruit & Veg Communities! Registration for primary schools is free!



Schools will also receive resources including: lessons, family resources and recipe ideas as well as student competition ideas. Schools will also receive printed classroom posters and stickers.

Fruit & Veg Month will be held during the last four weeks of Term 3.

For more details on Fruit & Veg Month and to register, go to: www.healthykids.com.au/teachers/fruit-veg-month/

FMS of the Month - overarm throwing



The fundamental movement skill of the month is OVERARM THROWING. The overarm throw is a manipulative skill frequently used in sports such as cricket, softball and baseball. Check out the skill components to ensure that you can assist 'detect and correct' your students.

Skill components

1. Eyes focused on target area throughout the throw.
2. Stands side-on to target area.
3. Throwing arm moves in a downward and backward arc.
4. Steps towards target area with foot opposite throwing arm.
5. Hips then shoulders rotate forward.
6. Throwing arm follows through, down and across the body.



Lansvale East Public School

21 Riverside Rd, Lansvale East NSW 2166

Phone: (02) 9728 1278 Email: lansvalee-p.school@det.nsw.edu.au

Website: <http://www.lansvalee-p.schools.nsw.edu.au/>

Road safety

Safety Town is an interactive road safety education resource for NSW teachers, students and families. It provides a variety of interactive learning activities for students from Kindergarten to Year 6. Teachers are provided with comprehensive teaching notes to support the use of the interactive activities, and support learning as part of PDHPE, English and Mathematics.

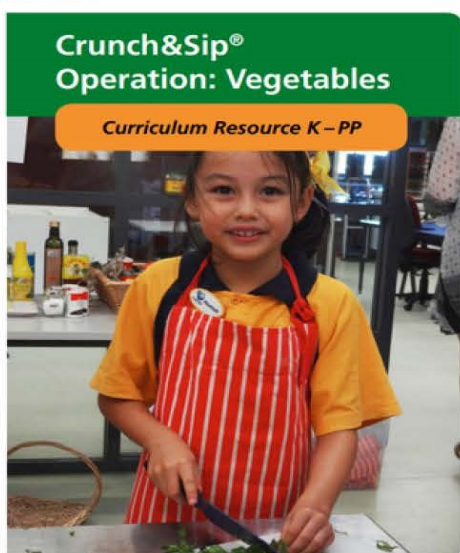


The program is funded by the Centre for Road Safety and Transport for NSW. It is a partnership with the Association of Independent Schools, Catholic Education Commission, Department of Education as well as the Kids and Traffic Early Childhood Road Safety Education Program. The partnership supports the teaching of road safety to students by classroom teachers.

MORE INFO



Crunch & Sip



- ? Did you know that *Crunch & Sip* has teacher resources for classroom activities? Curriculum resources are organised into stages.
- You can download resources relevant to your stage from the [website](http://www.crunchandsip.com.au).

Keep smiling

Dental Health Week is from 1 to 7 August. One of the key messages this year is to 'Eat a healthy, balanced diet and limit added sugar intake'.

To know how much sugar is in the foods and drinks you purchase, it is best to read the Nutrition Information Panel located on the food label to help you to make healthy choices.



Understanding sugar

Nutrition Information		
Serving size: 100g		
	Quantity per serving	Quantity per 100g
Energy	600 kJ	600 kJ
Protein	4.2 g	2.8 g
Fat, total	7.4 g	4.9 g
- saturated	4.5 g	3.0 g
Carbohydrate, total	18.6 g	12.4 g
- sugars	18.6 g	12.4 g
Sodium	90 mg	60 mg
Ingredients: Whole milk, concentrated cane molasses, sugar, banana (10%), strawberry (10%), grapes (10%), peach (10%), pineapple (10%), gelatin, sodium citrate (E339) (10%)		

Use this column when comparing products

How much sugar to look for:

15g or less - okay

10g or less - better

5g or less - best

Where does sugar sit in the list?

The closer to the top of the list of ingredients, the more sugar present.



Stage 3 teachers can find maths lessons about 'Understanding the Nutrition Information Panel' [here](http://www.crunchandsip.com.au).

Get in touch at SWSLHD-LiveLifeWell@health.nsw.gov.au

Lansvale East Public School

21 Riverside Rd, Lansvale East NSW 2166

Phone: (02) 9728 1278 Email: lansvalee-p.school@det.nsw.edu.au

Website: <http://www.lansvalee-p.schools.nsw.edu.au/>



UNIFORM ORDER FORM

Please indicate below the size and quantity of the items required and calculate the total.

Payments can be made by any of the following methods:

- Parent Online Payment (POP instructions on the back of this form)
- Correct cash in an envelope

Please send your completed order form to school with your child, alternatively please e-mail the form to

Lansvalee-p.school@det.nsw.edu.au

ITEM	COST	SIZE	QUANTITY	TOTAL
		4 6 8 10 12 14 16 M L		
School Dress	\$45:00			
Skort	\$20:00			
Short Sleeve Polo	\$25:00			
Long Sleeve Polo	\$30:00			
Shorts (Boys)	\$20:00			
Jacket	\$30:00			
Sports Shorts	\$20:00			
Sports Shirt	\$25:00			
Tracksuit	\$70:00			
Tracksuit Jacket	\$40:00			
Tracksuit Pants	\$30:00			
Hat/Cap	\$20:00			
Excursion Bag	\$15:00			
School Bag	\$35:00			
Library Bag	\$25:00			
			TOTAL	\$

Child's Name _____ Class _____ Date _____

Parent/Carer Name _____ Signature _____ Phone _____

Payment Method ☐ POP Payment ☐ Cash ☐ Credit Card

Visa ☐ Mastercard ☐ Card Number _____ / _____ / _____ / _____

Expiry _____ / _____ CCV _____

LANSVALE EAST PUBLIC SCHOOL
RIVERSIDE ROAD LANSVALE NSW 2166
TEL: 9728 1278 FAX: 9728 2339
EMAIL: lansvalee-p.school@det.nsw.edu.au WEB: www.lansvalee-p.school@det.nsw.edu.au

Lansvale East Public School

21 Riverside Rd, Lansvale East NSW 2166

Phone: (02) 9728 1278 Email: lansvalee-p.school@det.nsw.edu.au

Website: <http://www.lansvalee-p.schools.nsw.edu.au/>



PARENT ONLINE PAYMENTS

Using Westpac QuickWeb

Dear Parents,

Online payments are accessed through the home page of the school's website:

www.lansvalee-p.school@det.nsw.edu.au

The school website will have an option on the menu bar "Make a Payment".

When you click on this you will be taken straight to the Westpac QuickWeb page.

Payers will complete the necessary details, some of which are mandatory before confirming the payment details and completing the payment. A receipt can be printed from the payment page.

The payment screens are:

- Entering payment details
- Entering credit card details
- Confirmation of payment details and
- Online payment receipt

Payments can be made by Visa or MasterCard credit or debit card only. The school does not see any details of your card.

Please ensure you enter the child's correct name, class and details of what you are paying for. These details are necessary so that the payment is credited to the correct child.

All payments made before 6.00pm each day will be received at the school the next day. Payment after 6.00pm will not be received by the school for two days.

LANSVALE EAST PUBLIC SCHOOL
RIVERSIDE ROAD LANSVALE NSW 2166
TEL: 9728 1278 FAX: 9728 2339
EMAIL: lansvalee-p.school@det.nsw.edu.au WEB: www.lansvalee-p.school@det.nsw.edu.au

Lansvale East Public School

21 Riverside Rd, Lansvale East NSW 2166

Phone: (02) 9728 1278 **Email:** lansvalee-p.school@det.nsw.edu.au

Website: <http://www.lansvalee-p.schools.nsw.edu.au/>

School Community Charter

 **Collaborative. Respectful. Communication.**

The following School Community Charter outlines the responsibilities of parents, carers, educators and school staff in NSW public schools to ensure our learning environments are collaborative, supportive and cohesive.

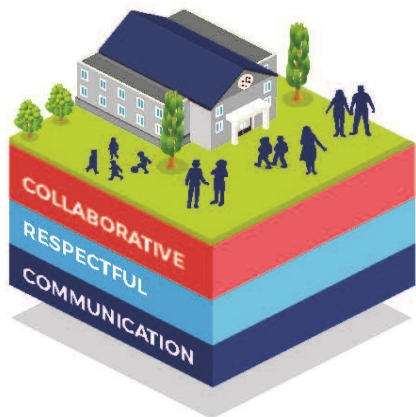
We treat
each other
with
respect

What our schools provide

NSW public schools work to create positive environments for students, staff and the entire school community that support student learning. We strive to ensure that every student is known, valued and cared for.

The best education happens when parents and schools work together.

The School Community Charter aligns with the NSW Department of Education Strategic Plan 2018 – 2022.



Positive environments

It is important that our NSW public schools are positive environments and that parents and carers are kept informed of students' progress and school announcements.

Parents and carers can expect:

- To be welcomed into our schools to work in partnership to promote student learning.
- Communication from school staff will be timely, polite and informative.
- Professional relationships with school staff are based on transparency, honesty and mutual respect.
- To be treated fairly. Tolerance and understanding are promoted as we respect diversity.

We
prioritise
the wellbeing
of all students
and staff

**Unsafe
behaviour**
is not acceptable
in our schools

We work
together
with the
school

Ensuring respectful learning environments for all members of NSW Public Schools communities.

© NSW Department of Education



We create
collaborative
learning
environments

We
all play
our part

We work
in partnership
to promote
student
learning

Communicating with our schools

Our staff will find a time to talk to you when they can give you their full attention. Please remember that while our staff are in class or dealing with other matters, they may not be available to answer your questions immediately.

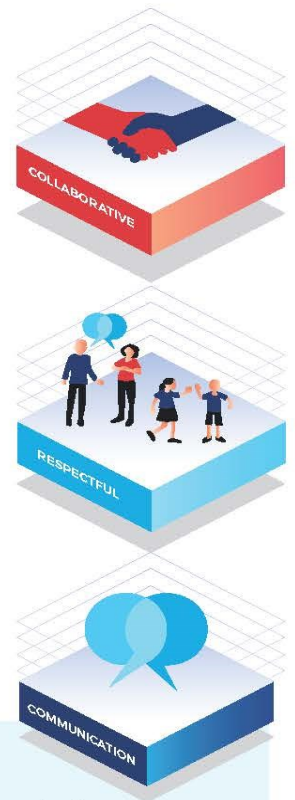
Our schools and communities will make sure that written communication is appropriate, fair and easy to read. We encourage you to use email and social media appropriately to connect with your school and stay up-to-date with up-coming events in the school community.

Our guide for parents, carers and students provides useful information about the complaints process:
education.nsw.gov.au/about-us/rights-and-accountability/complaints-compliments-and-suggestions/guide-for-parents-carers-and-students

Respectful communication is a right

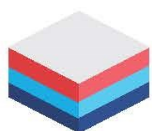
In all workplaces people have the right to feel respected. Unacceptable and offensive behaviour has no place in our school communities.

To ensure the wellbeing of students, staff and the community in our schools, steps will be taken to address unacceptable behaviour. This may include restricting contact with the school community or, in more serious cases, referral to NSW Police.



Unacceptable behaviour may include but is not limited to:

- Aggressive or intimidating actions, such as violence, threatening gestures or physical proximity.
- Aggressive or intimidating language, including the use of obscenities, making sexist, racist or derogatory comments or using a rude tone.
- Treating members of the school community differently due to aspects such as their religion or disability.
- Inappropriate and time wasting communication.



Collaborative.
Respectful.
Communication.

School Community Charter

education.nsw.gov.au

Lansvale East Public School

21 Riverside Rd, Lansvale East NSW 2166

Phone: (02) 9728 1278 **Email:** lansvalee-p.school@det.nsw.edu.au

Website: <http://www.lansvalee-p.schools.nsw.edu.au/>