



LEPS Community News

- From the Principal's desk
- K-3A & 5-Z News
- 1-3C News
- 4-5E News
- Message from School Counsellor Mrs Pyke
- Notes sent home
- Community News
- Uniform Price List

Dates to remember...

Monday 5 September	Athletics Zone
Tuesday 6 September	Pyjama Day Year 6 Fundraiser
Wednesday 7 September	5-6K Community Walk Chipping Norton Lake
Thursday 8 September (from 9:15am)	Whole School Assembly Father's and Carers Morning Tea

From the Principal's Desk

Dear Parents and Carers,

Our week 7 saw our students at LEPS attend their stage excursion or incursion for the term. We thank everyone for their organisation and our wonderful parent helpers in making the days a success.

STAY HOME IF YOU ARE SICK

If your chil/ren are unwell please keep them at home. When children are unwell at school you or your nominated emergency contact will need to collect them immediately. Please make sure your contact details are up to date.

Check out the link below.

<https://www.health.nsw.gov.au/infectious/influenza/Pages/default.aspx>



Attendance

Days missed = years lost

A day here and there doesn't seem like much, but...



K-3A AND 5-7

OUR FUN LEARNING IN TERM 3

ENGLISH

This Term in English we have been looking at how to use our sight words in sentences. Our writing has improved and we are having so much fun exploring how many ways we can use our sight words in different sentences.

MATHEMATICS

We have learnt how to explore the area of regular and irregular shapes. We have used the Interactive White board to draw and colour the area of the shape.



FINE MOTOR

As a class we are developing our fine motor skills. This means we engage in small activities that support us in our cutting skills and how to hold a pencil. Our activities are so much fun.

INTEGRATION

This term we have had a lot of opportunities to integrate into our buddy class and explore concepts in PDHPE, Library, Buddy Reading and our amazing CAPA rotations for Dance and Creative Arts. Our favourite is of course dance and buddy reading.



Join us for our Whole School Assembly followed by our Father's and Carers morning Tea.



WHOLE SCHOOL ASSEMBLY

Thursday 8th September
2022, School Hall at 9:15am

**Fathers Day
Morning Tea**
Provided after
assembly

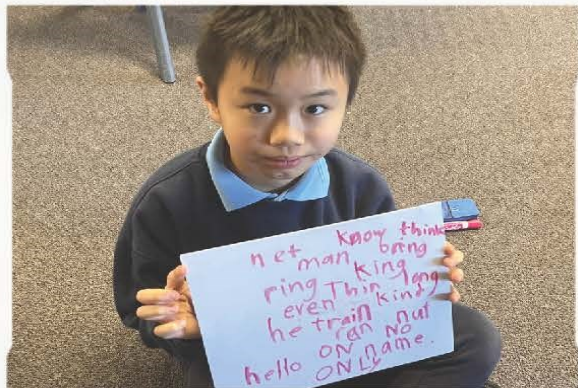


WE WOULD LIKE TO INVITE FAMILIES AND FRIENDS OF STUDENTS AT LANSVALE EAST PUBLIC SCHOOL TO ATTEND OUR WHOLE SCHOOL ASSEMBLY.

PERFORMANCES:

- 2-DT AND 1-3C
- SCHOOL CHOIR





ENGLISH

In soundwaves, students in 1-3C have started independently brainstorming words with the grapheme and phoneme of the week. Students are also learning to take turns and share voice space.



EXCURSIONS & INCURSIONS

The year 3 students in 1-3C got to go on an excursion to Sydney Olympic Park to learn about the lifecycle of living things. While the students in years 1 & 2 attended an incursion to learn about air resistance, force and friction. Students were able to participate and take part in hands-on experiments & activities.



4-5 E

Week 6- Book Week

**This week we
dressed up as
book
characters
and performed
with 4-5T the
story of
Tiddalick the
Frog.**



Lansvale East Public School

21 Riverside Rd, Lansvale East NSW 2166

Phone: (02) 9728 1278 **Email:** lansvalee-p.school@det.nsw.edu.au

Website: <http://www.lansvalee-p.schools.nsw.edu.au/>

Remember Pyjama Day on Tuesday 6 September to help year 6 with their Fundraiser for their end of year farewell dinner.



18 August 2022

Pyjama Day

Dear Parents and Carers,

The Year 6 students will be running a **'Pyjama Day'** on **6 September 2022** to help raise funds for the Year 6 Farewell. The SRC encourages everyone to come to school with their pyjamas. For a gold coin donation, students are permitted to come to school in their warm pyjamas.

The Year 6 Students will also be selling ice blocks and snow cones on this day during lunch and recess. Ice blocks will cost \$1 each and snow cones will cost \$2.50 each. All funds raised will go towards the Year 6 Farewell.

Please remember that students need to wear appropriate sun safe warm clothing, including footwear (enclosed shoes) and a hat. **No slogans are allowed on the clothing items.**

Mr Diep
R. Assistant Principal Stage 2 & 3

Ms E. Ortega
Principal

LANSVALE EAST PUBLIC SCHOOL
RIVERSIDE ROAD LANSVALE NSW 2166
TEL: 9728 1278 FAX: 9728 2339
EMAIL: lansvalee-p.school@det.nsw.edu.au WEB: www.lansvalee-p.school@det.nsw.edu.au



Learning and bonding through board games



Families can lead busy lives but spending time together is important in building close relationships. Playing board games can be a fun way to do this. Board games also provide opportunities for children to learn and also build their social and emotional skills.

Board games provide many opportunities for early learning such as

- Identifying colours
- Counting spaces
- Hand eye coordination
- Dexterity – moving pieces around the board
- Matching
- Keeping score
- Reading
- Waiting your turn

For older children there may be opportunities to

- Plan
- Organise
- Problem solve
- Make decisions

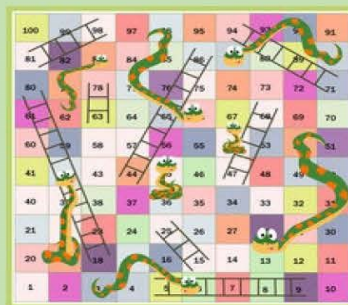
There can also be opportunities to work as a team, develop language skills and sharpen focus.

There will be times when things don't go the child's way and games can provide a great opportunity to promote resilience, through learning to cope with the disappointment of losing.

Simple board and card games can be cheap to buy and can provide hours of fun!

Mrs Py're

School counsellor





Community Walk to Chipping Norton Lake 2022

18 August 2022

Dear Parent/Caregiver,

5-6K students have been given the amazing opportunity to attend a Community Walk to Chipping Norton Lake. On **7 September 2022**, students will participate in a range of engaging educational activities including the viewing of our local flora, fauna and painting using a canvas linking to Creative Arts and Geography – Factors that Shape Places outcomes they are learning this Term.

When: 7 September 2022

Students to depart school from: 9:30PM **and return by** 2:30PM.

What to bring: Small backpack with hat, bottle, lunch and recess. Please write your child's name on their bag. (Please do not bring money as we will not be purchasing food or items)

What to wear: Full school sports uniform with school hat.

Cost: \$0.00 (FREE, all costs will be covered)

Staff members with emergency care and CPR training are accompanying the students. A risk assessment of this activity has been undertaken and all necessary actions have been approved by the Principal. Students who are of concern because of recent, unsafe behaviours at school, may be excluded from this excursion. Parents will be notified if staff are considering excluding any particular student from attending.

Mr. S Diep
R. Assistant Principal Stage 2 & 3
Miss. A Droulias
5-6K Classroom Teacher

Ms E. Ortega
Principal

----- Please detach -----



Community Walk at Chipping Norton Lake

I consent for my child _____ (Student name) from Class 5-6K to attend the Community Walk Excursion on _____ Date.

My child has the following additional needs (Please specify):

Parent / Caregiver Signature: _____ Date: _____

PERMISSION NOTE MUST BE RETURNED BY TUESDAY 30 AUGUST 2022.

LANSVALE EAST PUBLIC SCHOOL
RIVERSIDE ROAD LANSVALE NSW 2166
TEL: 9728 1278 FAX: 9728 2339
EMAIL: lansvalee-p.school@det.nsw.edu.au WEB: www.lansvalee-p.school@det.nsw.edu.au



Expression of Interest: Canberra Overnight Excursion 2022

Thursday 1 September 2022

Dear Parents and Carers,

In HSIE this year, students from Years , 4, 5 and 6 will be learning about A Diverse And Connected World and The Earth's Environment. To enhance this learning experience, we have arranged for an exciting two night/three day camp to Canberra. The excursion will take place on **Monday 31st October 2022 - Wednesday 2nd November 2022** Overnight accommodation will be at the **Gold Creek Tourist Resort**. There are only **50 places** available for this excursion and priority will be granted to students who return their initial permission note and deposit/payment.

This is an extremely valuable educational experience for our children that will allow them to visit Parliament House to build on their knowledge and to see parliament in action. They will also be visiting a number of other attractions in Canberra, which will include: the Australian War Memorial; Questacon, GeoScience Australia, Reptile Zoo and Mount Ainslie Lookout.

This note is to inform you of the cost of the excursion and to gain initial permission for your child to attend. A more detailed itinerary will be forwarded early next term.

The cost of the excursion is \$370; however, The Parliament Civics Education Rebate (PACER) Program will be subsidising \$30 per student to assist families and students in attending civics and citizenship education programs and Lansvale East Public School will be subsidising \$40 per student. Therefore, the total cost per student for the overnight excursion is **\$300** which includes travel by coach to Canberra, entry to all the attractions, overnight accommodation, snow gear/parka hire and all meals, except for breakfast and lunch on the first day.

If your child is interested in attending the excursion to Canberra this year, it is important that you return your note along with a **\$150 deposit** to the office by Thursday 22 September 2022. **Places are limited and will be allocated to students as they return their note and deposit. Only students who have returned their note by 22 September 2022 will be included.**

Payment can be made in the following ways:

Option 1

- ☐ Two **online or cash** instalments with a non-refundable deposit. These payments will be due as follows:
 - \$150 deposit (**non-refundable**) by Thursday 22 September 2022
 - \$150 payment by Monday 24 October 2022

Option 2

- Full \$300 **online or cash payment** by Monday 24 October 2022

PLEASE NOTE NO LATE PAYMENTS WILL BE ACCEPTED WITHOUT PRIOR APPROVAL

Schools take strong action in response to behaviour that is detrimental to self or others or the achievement of high quality teaching and learning. Attendance on this camp is dependent upon good behaviour at school.

If you have any questions regarding this excursion please contact the office or Mr Diep.

Mr S. Diep
Assistant Principal

Ms E. Ortega
Principal

LANSVALE EAST PUBLIC SCHOOL
RIVERSIDE ROAD LANSVALE NSW 2166
TEL: 9728 1278 FAX: 9728 2339

EMAIL: lansvalee-p.school@det.nsw.edu.au WEB: www.lansvalee-p.school@det.nsw.edu.au



Canberra Overnight Excursion

I give permission for my child _____ of class _____ to attend the Canberra and Snow Overnight Excursion, organised by Macquarie Educational Tours on **Monday 31 October 2022 – Wednesday 2 November 2022**. I understand that travel will be by coach and that children will be staying overnight in supervised accommodation on the **Monday 31 October 2022 and Tuesday 1 November 2022 at the Gold Creek Tourist Resort.**

Payment will be by (please tick):

Option 1:

Two instalments (cash or online payment) 1st instalment due by Thursday 22 September 2022

☐ CASH enclosed \$ _____

☐ Online Payment Receipt Number: _____

Option 2:

Full payment (online or cash) Permission note returned by Thursday 22 September 2022, payment must be finalised by Monday 24 October 2022.

☐ CASH enclosed \$ _____

☐ Online Payment Receipt Number: _____

Additional Medical Information _____

Parent / Caregiver
(Signature)

Parent / Caregiver
(Print Name)

Date

**PLEASE NOTE THIS PERMISSION NOTE MUST BE RECEIVED NO
LATER THAN THURSDAY 22 SEPTEMBER 2022**

LANSVALE EAST PUBLIC SCHOOL
RIVERSIDE ROAD LANSVALE NSW 2166
TEL: 9728 1278 FAX: 9728 2339
EMAIL: lansvalee-p.school@det.nsw.edu.au WEB: www.lansvalee-p.school@det.nsw.edu.au



UNIFORM ORDER FORM

Please indicate below the size and quantity of the items required and calculate the total.

Payments can be made by any of the following methods:

- Parent Online Payment (POP instructions on the back of this form)
- Correct cash in an envelope

Please send your completed order form to school with your child, alternatively please e-mail the form to

Lansvalee-p.school@det.nsw.edu.au

ITEM	COST	SIZE	QUANTITY	TOTAL
		4 6 8 10 12 14 16 M L		
School Dress	\$45:00			
Skort	\$20:00			
Short Sleeve Polo	\$25:00			
Long Sleeve Polo	\$30:00			
Shorts (Boys)	\$20:00			
Jacket	\$30:00			
Sports Shorts	\$20:00			
Sports Shirt	\$25:00			
Tracksuit	\$70:00			
Tracksuit Jacket	\$40:00			
Tracksuit Pants	\$30:00			
Hat/Cap	\$20:00			
Excursion Bag	\$15:00			
School Bag	\$35:00			
Library Bag	\$25:00			
			TOTAL	\$

Child's Name _____ Class _____ Date _____

Parent/Carer Name _____ Signature _____ Phone _____

Payment Method ☐ POP Payment ☐ Cash ☐ Credit Card

Visa ☐ Mastercard ☐ Card Number _____ / _____ / _____ / _____

Expiry _____ / _____ CCV _____

LANSVALE EAST PUBLIC SCHOOL
RIVERSIDE ROAD LANSVALE NSW 2166
TEL: 9728 1278 FAX: 9728 2339
EMAIL: lansvalee-p.school@det.nsw.edu.au WEB: www.lansvalee-p.school@det.nsw.edu.au

Lansvale East Public School

21 Riverside Rd, Lansvale East NSW 2166

Phone: (02) 9728 1278 Email: lansvalee-p.school@det.nsw.edu.au

Website: <http://www.lansvalee-p.schools.nsw.edu.au/>



PARENT ONLINE PAYMENTS

Using Westpac QuickWeb

Dear Parents,

Online payments are accessed through the home page of the school's website:

www.lansvalee-p.school@det.nsw.edu.au

The school website will have an option on the menu bar "Make a Payment".

When you click on this you will be taken straight to the Westpac QuickWeb page.

Payers will complete the necessary details, some of which are mandatory before confirming the payment details and completing the payment. A receipt can be printed from the payment page.

The payment screens are:

- Entering payment details
- Entering credit card details
- Confirmation of payment details and
- Online payment receipt

Payments can be made by Visa or MasterCard credit or debit card only. The school does not see any details of your card.

Please ensure you enter the child's correct name, class and details of what you are paying for. These details are necessary so that the payment is credited to the correct child.

All payments made before 6.00pm each day will be received at the school the next day. Payment after 6.00pm will not be received by the school for two days.

LANSVALE EAST PUBLIC SCHOOL
RIVERSIDE ROAD LANSVALE NSW 2166
TEL: 9728 1278 FAX: 9728 2339
EMAIL: lansvalee-p.school@det.nsw.edu.au WEB: www.lansvalee-p.school@det.nsw.edu.au

Lansvale East Public School

21 Riverside Rd, Lansvale East NSW 2166

Phone: (02) 9728 1278 **Email:** lansvalee-p.school@det.nsw.edu.au

Website: <http://www.lansvalee-p.schools.nsw.edu.au/>

School Community Charter

 **Collaborative. Respectful. Communication.**

The following School Community Charter outlines the responsibilities of parents, carers, educators and school staff in NSW public schools to ensure our learning environments are collaborative, supportive and cohesive.

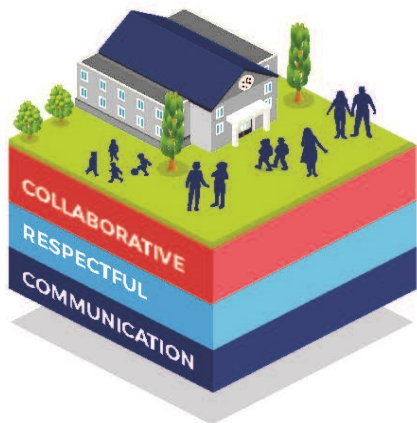
We treat
each other
with
respect

What our schools provide

NSW public schools work to create positive environments for students, staff and the entire school community that support student learning. We strive to ensure that every student is known, valued and cared for.

The best education
happens when parents and
schools work together.

The School Community Charter aligns with the NSW Department of Education Strategic Plan 2018 – 2022.



Positive environments

It is important that our NSW public schools are positive environments and that parents and carers are kept informed of students' progress and school announcements.

Parents and carers can expect:

- To be welcomed into our schools to work in partnership to promote student learning.
- Communication from school staff will be timely, polite and informative.
- Professional relationships with school staff are based on transparency, honesty and mutual respect.
- To be treated fairly. Tolerance and understanding are promoted as we respect diversity.

We
prioritise
the wellbeing
of all students
and staff

**Unsafe
behaviour**
is not acceptable
in our schools

We work
together
with the
school

**Ensuring respectful learning environments for all
members of NSW Public Schools communities.**

© NSW Department of Education



We create
collaborative
learning
environments

We
all play
our part

We work
in partnership
to promote
student
learning

Communicating with our schools

Our staff will find a time to talk to you when they can give you their full attention. Please remember that while our staff are in class or dealing with other matters, they may not be available to answer your questions immediately.

Our schools and communities will make sure that written communication is appropriate, fair and easy to read. We encourage you to use email and social media appropriately to connect with your school and stay up-to-date with up-coming events in the school community.

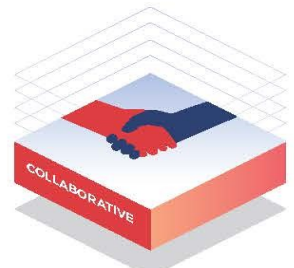
Our guide for parents, carers and students provides useful information about the complaints process:

education.nsw.gov.au/about-us/rights-and-accountability/complaints-compliments-and-suggestions/guide-for-parents-carers-and-students

Respectful communication is a right

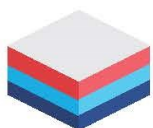
In all workplaces people have the right to feel respected. Unacceptable and offensive behaviour has no place in our school communities.

To ensure the wellbeing of students, staff and the community in our schools, steps will be taken to address unacceptable behaviour. This may include restricting contact with the school community or, in more serious cases, referral to NSW Police.



Unacceptable behaviour may include but is not limited to:

- Aggressive or intimidating actions, such as violence, threatening gestures or physical proximity.
- Aggressive or intimidating language, including the use of obscenities, making sexist, racist or derogatory comments or using a rude tone.
- Treating members of the school community differently due to aspects such as their religion or disability.
- Inappropriate and time wasting communication.



Collaborative.
Respectful.
Communication.

School Community Charter

education.nsw.gov.au

Lansvale East Public School

21 Riverside Rd, Lansvale East NSW 2166

Phone: (02) 9728 1278 **Email:** lansvalee-p.school@det.nsw.edu.au

Website: <http://www.lansvalee-p.schools.nsw.edu.au/>