



LEPS Community News

- From the Principal's desk
- K-1-2 DT News
- 2-4 P News
- 3-4 T News
- PBL News
- Notes sent home
- Community News
- Uniform Price List

From the Principal's Desk

The last two week has been very busy with celebrating our wonderful SASS staff and Father's, Carers Day with our morning tea.



SAS STAFF RECOGNITION WEEK – 5 September – 9 September

The week from 5—9 September was a special one for our School Administrative and Support Staff (SAS Staff) as we recognise the amazing work they all do as part of National SASS Recognition Week and each and every day.

SAS staff include:

- **Admin Manager** – Mrs Ibrahim

- **Admin Officers** – Mrs De Silva, Mrs Huynh, Ms Baez

- **School Learning Support Officers** – Mrs Loprieto, Miss Sanchez, Mr Al Saedi, Ms Sindhu, Mrs Talaia, Ms Tung, Ms Jabakhanji, Miss Abbas

- **General Assistants** – Mr Bushby, Mr Pete and Miss Rebecca

We extend our gratitude to the wonderful parents and carers that assist in our canteen throughout the week in supporting our school, students and families; Mrs Ranya Alhamod, Mrs Ngoc vi Dao, Mrs Thi Thuy An Nguyen and Mrs Simoons.

We thank the parents and carers that attended our assembly and stayed for our morning tea with our Community Liaison Officers: Mrs Huynh and Mr Al Saedi. We look forward to many more opportunities to engage in discussions to support our school goals.

Please remember that Thursday 22 September is a Public Holiday. Staff and students return Friday for the last day of school.

Thank you and have a great week.

Wednesday 21 September 2022	PBL Green Event Gala Day
Thursday 22 September 2022	Public Holiday - National Day of Mourning of Queen Elizabeth II
Friday 23 September 2022	End of Term 3

K-1-2DT NEWS



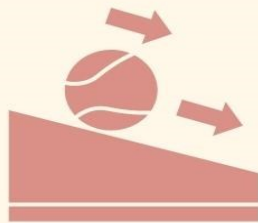
Forces in Action

K-1-2DT had a blast learning about forces in action through conducting experiments about friction, buoyancy, and gravity. We also explored how push and pull forces are used in everyday activities by designing our own arcade games and toys.



Integration with K-3A

In maths, K-1-2DT and K-3A explored whether different 3D objects could roll, slide, or do both. We discovered that cups, bowls, and coins could roll on its curved side and slide on the flat side!



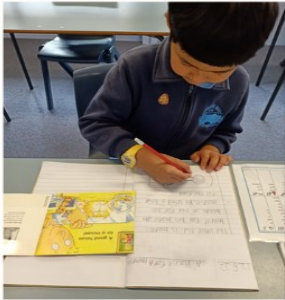


2-4P Great Learning!



In 2-4P, students are engaging in fun, interactive and hands-on learning activities. Students have explored a different phoneme and grapheme each week. All our key learning areas have been linked to the focus phoneme or grapheme. This week the focus letter was 'e' and 'ee'.

English



Students
writing
about
bees.

Creative Arts/ Science



'E for Earth'

ICT



Maths



Students counting,
identifying and
regrouping numbers
using objects.





3-4T



Classroom News



ENGLISH

In English, we have been looking at different Dreamtime Stories and we are working towards creating our own stories.

CAPA

Every Friday, 3-4T and 2-4P have been integrating to engage in Creative Arts and Dance. During Dance, 3-4T have been integrating with 2-4P and have been practicing our dance for the concert next Term.

EXCURSION TO SYDNEY OLYMPIC PARK IN WEEK 7





PBL NEWS

Be responsible Be respectful Be resilient

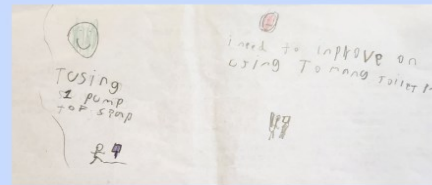
PBL FOCUS

Week 8 & 9

Responsible use of toilets.

For students to understand and demonstrate responsible behaviour when using the toilets and other bathroom facilities.

Students from K-1-2DT reflecting on what they do responsibly in the toilets and what they could improve on.



Students from 2-4P are learning to be responsible when using the toilet.

They go with a buddy and wait outside until their friend has finished.



PBL Gotcha awards

Congratulations to Jayden, Lilianne, AJ, Nouman, Jonathan and Gabriel for receiving the GOTCHA awards.



Lansvale East Public School

21 Riverside Rd, Lansvale East NSW 2166

Phone: (02) 9728 1278 Email: lansvalee-p.school@det.nsw.edu.au

Website: <http://www.lansvalee-p.schools.nsw.edu.au/>



LEPS PBL Gotcha Awards

The *Positive Behaviour for Learning* (PBL) 'Gotcha Awards' are presented to students who follow the PBL Playground Rules in being **Responsible**, **Respectful** and **Resilient**.

The Gotcha Award Recipients for **Term 3 Week 6**, 2022 are:

Award Recipients	For being Responsible	For being Respectful	For being Resilient
	Tupou Tupou (3-4T)	Kitikitonai Moala (K-3A)	Bernard Luu (1-3C)
	Zaynab Al-Tameme (4-5E)	Nolan Ho (K-1-2DT)	Phoenix Arena (1-3C)

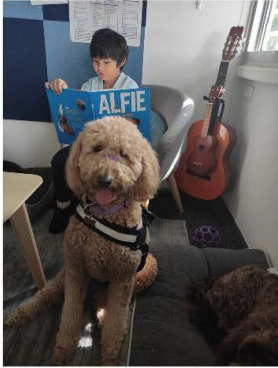
The Gotcha Award Recipients for **Term 3 Week 8**, 2022 are:

Award Recipients	For being Responsible	For being Respectful	For being Resilient
	Jayden Tran (4-5E)	Lilianne Alnimry (5-6K)	A J Boonyanit (2-4P)
	Nouman Nizamani (5-6S)	Jonathan Philips (4-5T)	Gabriel Tu U (3-4T)



LEPS WELLBEING SCHOOL SUPPORT DOGS

VISITING CLASSROOMS



Sade and Lenny
enjoy reading in
2-4P



Sade loves reading
time in **3-4T** with
Amelia and Sajjad .



Popping into **1-3C, 4-5T** and
K-3A to say hello and get a
belly rub.



Ziggy the big boss in
training, supervising
5-6K doing their
work.



What are the benefits of Wellbeing School Support dogs?

- Lower people's blood pressure and stress levels.
- Increase levels of dopamine and serotonin.
- Improve physical well-being.
- Decrease anxiety.
- Dramatically increase positive mood.
- Ease social isolation and help children learn social skills.
- Help young readers gain confidence.



PBL Green Event

Thursday 8 September 2022

Dear Parents / Caregiver,

Positive Behaviour for Learning (PBL) provides students and staff at Lansvale East Public School with a set of rules - '**Be Responsible**', '**Be Respectful**' and '**Be Resilient**', which underpin a positive and proactive system for defining, teaching and supporting appropriate student behaviours. PBL develops a positive, safe and supportive school climate which maximises student learning and growth.

The PBL Team has organised a Green Event Gala Day on **Wednesday 21 September 2022** (Term 3 Week 10) for students who have been following the PBL school rules and expectations in Term 3.

The PBL Green Event will be held in the middle school session from 11:30am to 1:30pm. Students will participate in a series of activities, after which they will be provided with green jelly cups, green cordial and green food on a platter, that will include green apples, green grapes, green pears, cucumber, green avocado and tortillas (subject to availability).

In addition, snow cones will be sold in the canteen for \$2.50 each as part of Year 6 Fundraising.

Congratulations to the wonderful students of Lansvale East Public School who have been invited to the PBL Green Event for following the school rules.

Location: Onsite Lansvale East Public School
When: Wednesday 21 September 2022
What to wear: Mufti day (Students are encouraged to wear green)

Staff members with emergency care and CPR training are accompanying the students. A risk assessment of this activity has been undertaken and all necessary actions have been approved by the Principal. Students who are of concern because of recent, unsafe behaviours at school, may be excluded from this excursion. Parents will be notified if staff are considering excluding any particular student from attending.

Mrs S. Pinto
PBL Coordinator

Ms A. Droulias Ms N. Tran
PBL Committee

Ms E. Ortega
Principal

If your child has additional needs, please return below no later than Friday 16 September 2022

X

PBL Green Event

Wednesday 21 September 2022

As food will be served at the end of the Green Event activities, please specify if your child has any additional needs:

Parent / Caregiver
(Signature)

Parent / Caregiver
(Print Name)

Date

LANSVALE EAST PUBLIC SCHOOL
RIVERSIDE ROAD LANSVALE NSW 2166
TEL: 9728 1278 FAX: 9728 2339

EMAIL: lansvalee-p.school@det.nsw.edu.au WEB: www.lansvalee-p.school@det.nsw.edu.au



Lansvale East Public School

Communication Between Home and School Procedure

1. Objective

A parent and community guide for seeking information and expressing concerns. To provide a guide for parents/carers who wish to seek information and/or express concerns about school related matters whilst on school grounds. Our school understands that from time to time, parents/carers or other members of the school community may need to approach the school in order to:

- discuss the progress or welfare of their own child;
- express concern about actions of other students;
- enquire about school procedure or practice;
- express concern about actions of staff; and/or
- express concern about the actions of a parent/community member.

It is therefore necessary to have procedures that will help solve problems as soon as possible, so that a safe and harmonious school environment is maintained. The best results usually flow from working together.

2. Guidelines

These guidelines aim to:

- provide a guide so that concerns are dealt with in a transparent and fair manner;
- ensure that the rights of students, teaching staff and parents are respected and upheld;
- support sensitivity and confidentiality, and
- help reach an outcome which is acceptable to all persons involved.

Our school understands that concerns may cause frustration. However, it is important to organise a time to talk with school staff in an unhurried, calm and confidential atmosphere.

3. Enactment of 'Inclosed Lands Protection Act 1901

Principals (or an authorised representative of the principal) has the legal authority to deal with people who enter onto, or remain on school property, and behave in a way which would be considered offensive or threatening in the mind of any person(s) who are present on school grounds at the time. In this instance, the principal (or an authorised representative of the principal) may:

- direct the person to immediately leave the grounds;
- call the police to remove the person should he/she refuse;
- issue a warning or withdraw future permission (by letter) for the person to enter the grounds without permission of the principal, and/or
- seek further legal avenues.

4. Other Guidelines

- Parents must direct all school-related matters to the school office, relevant class teacher or principal, and under no circumstances are they to approach a child or contact other parents directly about such issues. It is the school's responsibility to investigate and address student welfare issues following Departmental guidelines.
- Meetings should be requested via the school office. To support the immediacy of responding to a parent concern, the school will acknowledge the receipt of the request and provide meeting options/preferences for the parent, taking into account the timetabled teaching day constraints for staff members and time needed to investigate parent/student concerns. All efforts will be made to schedule a productive meeting (or follow up phone call) within 48 hours.

5. Quick Tips (Reference Table)

Consider the following table as a reference guide when dealing with common school related concerns.

Concern	Who to Contact
Student welfare, school procedures, academic, curriculum, excursion, health care or financial queries (Note: these must relate to your own child only)	Class teacher or executive staff member, via the school office
Feedback on the school's strategic directions, organisational budget, implementation of Departmental procedures and annual school assessment processes	Principal, via the school office
P&C fundraiser projects or business items	Principal (via the school office) or P&C President
Counsellor assistance or additional learning support queries (i.e. E/ALD, support learning assistance)	School office – who will arrange for the appropriate staff member to speak with you, or contact you at the next available opportunity
Specific school procedures or practices	Principal, via the school office
Actions of a parent/community member	Principal, via the school office
Actions of other students	Class teacher or executive staff member, via the school office





UNIFORM ORDER FORM

Please indicate below the size and quantity of the items required and calculate the total.

Payments can be made by any of the following methods:

- Parent Online Payment (POP instructions on the back of this form)
- Correct cash in an envelope

Please send your completed order form to school with your child, alternatively please e-mail the form to

Lansvalee-p.school@det.nsw.edu.au

ITEM	COST	SIZE	QUANTITY	TOTAL
		4 6 8 10 12 14 16 M L		
School Dress	\$45:00			
Skort	\$20:00			
Short Sleeve Polo	\$25:00			
Long Sleeve Polo	\$30:00			
Shorts (Boys)	\$20:00			
Jacket	\$30:00			
Sports Shorts	\$20:00			
Sports Shirt	\$25:00			
Tracksuit	\$70:00			
Tracksuit Jacket	\$40:00			
Tracksuit Pants	\$30:00			
Hat/Cap	\$20:00			
Excursion Bag	\$15:00			
School Bag	\$35:00			
Library Bag	\$25:00			
			TOTAL	\$

Child's Name _____ Class _____ Date _____

Parent/Carer Name _____ Signature _____ Phone _____

Payment Method ☐ POP Payment ☐ Cash ☐ Credit Card

Visa ☐ Mastercard ☐ Card Number _____ / _____ / _____ / _____

Expiry _____ / _____ CCV _____

LANSVALE EAST PUBLIC SCHOOL
RIVERSIDE ROAD LANSVALE NSW 2166
TEL: 9728 1278 FAX: 9728 2339
EMAIL: lansvalee-p.school@det.nsw.edu.au WEB: www.lansvalee-p.school@det.nsw.edu.au

Lansvale East Public School

21 Riverside Rd, Lansvale East NSW 2166

Phone: (02) 9728 1278 Email: lansvalee-p.school@det.nsw.edu.au

Website: <http://www.lansvalee-p.school@det.nsw.edu.au>



PARENT ONLINE PAYMENTS

Using Westpac QuickWeb

Dear Parents,

Online payments are accessed through the home page of the school's website:

www.lansvalee-p.school@det.nsw.edu.au

The school website will have an option on the menu bar "Make a Payment".

When you click on this you will be taken straight to the Westpac QuickWeb page.

Payers will complete the necessary details, some of which are mandatory before confirming the payment details and completing the payment. A receipt can be printed from the payment page.

The payment screens are:

- Entering payment details
- Entering credit card details
- Confirmation of payment details and
- Online payment receipt

Payments can be made by Visa or MasterCard credit or debit card only. The school does not see any details of your card.

Please ensure you enter the child's correct name, class and details of what you are paying for. These details are necessary so that the payment is credited to the correct child.

All payments made before 6.00pm each day will be received at the school the next day. Payment after 6.00pm will not be received by the school for two days.

LANSVALE EAST PUBLIC SCHOOL
RIVERSIDE ROAD LANSVALE NSW 2166
TEL: 9728 1278 FAX: 9728 2339
EMAIL: lansvalee-p.school@det.nsw.edu.au WEB: www.lansvalee-p.school@det.nsw.edu.au

Lansvale East Public School

21 Riverside Rd, Lansvale East NSW 2166

Phone: (02) 9728 1278 **Email:** lansvalee-p.school@det.nsw.edu.au

Website: <http://www.lansvalee-p.schools.nsw.edu.au/>



We create
collaborative
learning
environments

We
all play
our part

We work
in partnership
to promote
student
learning

Communicating with our schools

Our staff will find a time to talk to you when they can give you their full attention. Please remember that while our staff are in class or dealing with other matters, they may not be available to answer your questions immediately.

Our schools and communities will make sure that written communication is appropriate, fair and easy to read. We encourage you to use email and social media appropriately to connect with your school and stay up-to-date with up-coming events in the school community.

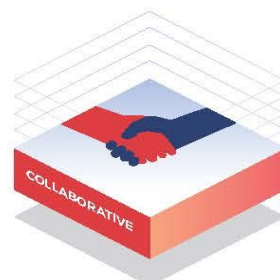
Our guide for parents, carers and students provides useful information about the complaints process:

education.nsw.gov.au/about-us/rights-and-accountability/complaints-compliments-and-suggestions/guide-for-parents-carers-and-students

Respectful communication is a right

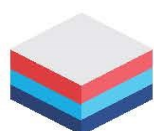
In all workplaces people have the right to feel respected. Unacceptable and offensive behaviour has no place in our school communities.

To ensure the wellbeing of students, staff and the community in our schools, steps will be taken to address unacceptable behaviour. This may include restricting contact with the school community or, in more serious cases, referral to NSW Police.



Unacceptable behaviour may include but is not limited to:

- Aggressive or intimidating actions, such as violence, threatening gestures or physical proximity.
- Aggressive or intimidating language, including the use of obscenities, making sexist, racist or derogatory comments or using a rude tone.
- Treating members of the school community differently due to aspects such as their religion or disability.
- Inappropriate and time wasting communication.



Collaborative.
Respectful.
Communication.

School Community Charter

education.nsw.gov.au

Lansvale East Public School

21 Riverside Rd, Lansvale East NSW 2166

Phone: (02) 9728 1278 **Email:** lansvalee-p.school@det.nsw.edu.au

Website: <http://www.lansvalee-p.schools.nsw.edu.au/>

School Community Charter

 **Collaborative. Respectful. Communication.**

The following School Community Charter outlines the responsibilities of parents, carers, educators and school staff in NSW public schools to ensure our learning environments are collaborative, supportive and cohesive.

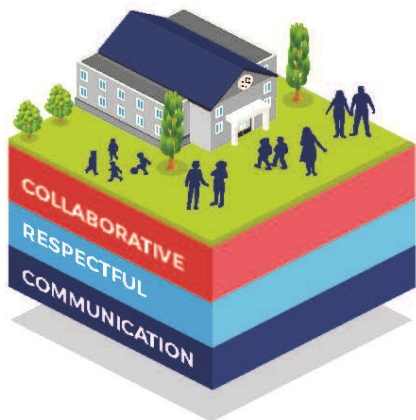
We treat
each other
with
respect

What our schools provide

NSW public schools work to create positive environments for students, staff and the entire school community that support student learning. We strive to ensure that every student is known, valued and cared for.

The best education happens when parents and schools work together.

The School Community Charter aligns with the NSW Department of Education Strategic Plan 2018 – 2022.



Positive environments

It is important that our NSW public schools are positive environments and that parents and carers are kept informed of students' progress and school announcements.

Parents and carers can expect:

- To be welcomed into our schools to work in partnership to promote student learning.
- Communication from school staff will be timely, polite and informative.
- Professional relationships with school staff are based on transparency, honesty and mutual respect.
- To be treated fairly. Tolerance and understanding are promoted as we respect diversity.

We
prioritise
the wellbeing
of all students
and staff

**Unsafe
behaviour**
is not acceptable
in our schools

We work
together
with the
school

Ensuring respectful learning environments for all members of NSW Public Schools communities.

© NSW Department of Education

Why attendance matters



When your child misses school they miss important opportunities to:



Learn



Make friends



Build skills through fun

Days missed = years lost

A day here and there doesn't seem like much, but...

When your child misses just...

they miss weeks per year

and years over their school life

1 day per **fortnight**
 = **4** weeks  = Over **1** year missed

1 day per **week**
 = **8** weeks  = Over **2.5** years missed

education.nsw.gov.au



Lansvale East Public School

21 Riverside Rd, Lansvale East NSW 2166

Phone: (02) 9728 1278 Email: lansvalee-p.school@det.nsw.edu.au

Website: <http://www.lansvalee-p.schools.nsw.edu.au/>

PCYC School Holiday Activities now open

BOOK NOW



IS LIFE CHANGING



Lansvale East Public School

21 Riverside Rd, Lansvale East NSW 2166

Phone: (02) 9728 1278 **Email:** lansvalee-p.school@det.nsw.edu.au

Website: <http://www.lansvalee-p.schools.nsw.edu.au/>

Spring School Holiday activities at PCYC Fairfield Cabramatta

COST: *\$40/day, 3 for \$100

AGES: Primary school aged

TIME: 8:30 am to 3:00 pm

BOOK NOW



ADDITIONAL INFO: *Laser tag \$45/day (cannot be part of 3/\$100)
PCYC membership required, we accept Creative Kids Vouchers

Mon 26th	Volleyball, ultimate hide and seek, clay sculpting
Tues 27th	Fort building, obstacle ninja, water colour painting
Wed 28th	Laser tag* (NEW ACTIVITY!), ball sports, balloon stress balls
Thur 29th	Musical chairs, red light green light, dodgeball, chalk mural
Fri 30th	Hula hoop competition, basketball, slime making
Mon 3rd	PUBLIC HOLIDAY
Tues 4th	Ultimate hide and seek, mini-Olympics, salt painting
Wed 5th	Laser tag *(NEW ACTIVITY!), dodgeball, origami
Thur 6th	Wacky tennis, parkour, finger painting
Fri 7th	Bull rush, tower building, smoothie masters, water colour painting

CONTACT US:

Please drop in to reception, call (02) 9727 8908, or email fairfieldcabramatta@pcycnsw.org.au
All information can be found at www.pcycnsw.org.au/fairfield-cabramatta/school-holidays



IS LIFE CHANGING



Lansvale East Public School

21 Riverside Rd, Lansvale East NSW 2166

Phone: (02) 9728 1278 Email: lansvalee-p.school@det.nsw.edu.au

Website: <http://www.lansvalee-p.schools.nsw.edu.au/>