



- ◆ From the Principal's desk
- ◆ 3-T News
- ◆ 4-E News
- ◆ 4-6T News
- ◆ PBL News
- ◆ Wellbeing Support Dogs News
- ◆ Community Updates
- ◆ Notes sent home

### Upcoming events

**Cross Country**  
**Monday 27 March**

**Easter Hat Parade**  
**Tuesday 28 March**

**Austism Awareness & Acceptance Week**  
**Wednesday 29**  
**March to Tuesday 4**  
**April**

**Western Sydney University in-School visit 30 March**

# LEPS Community News

## From the Principal's Desk

Dear Parents and Carers,



We had an incredible week celebrating Harmony Week. Congratulations to our students and staff on the organisation of the assembly and performances. The students did an amazing job and we were so excited to see so many parents and carers join the event.



On Friday our students and staff celebrated Ride to School Day. Many of our students had the opportunity to participate with the support of our local area police force. We thank our students, staff and families for their support.

The coming weeks will see many more activities for us to celebrate with our students; Cross Country and the Easter Hat Parade. We look forward to seeing our families join in the fun.



### STAY HOME IF YOU ARE SICK

If children are unwell at school, you or your nominated emergency contact will need to collect them immediately. Please make sure your contact details are up to date. Check out the link below.

<https://www.health.nsw.gov.au/infectious/influenza/Pages/default.aspx>



# 3T NEWS

Term 1

## CAPA

In 3T students have been participating in Futboltec and learning basic soccer skills. Students have been showing resilience by never giving up no matter how difficult the skills are, and are always trying harder each week. Keep up the great work!



## 3-6 Incursion

In Week 7, students went on a community walk to Strong Park. On the walk, students learnt about our local flora, fauna and painted what they saw along the walk.



**Lansvale East Public School**

21 Riverside Rd, Lansvale East NSW 2166

Phone: (02) 9728 1278 Email: [lansvalee-p.school@det.nsw.edu.au](mailto:lansvalee-p.school@det.nsw.edu.au)

Website: <http://www.lansvalee-p.schools.nsw.edu.au/>

# By 4E

## Our memories from Term 1, 2023.

Scarlett- This term I enjoyed our class book about a builder called Bob by Emily Rodda.  
I also learnt her real name is Jennifer.  
Ahmad- This term I liked spending time with new friends.  
Sophie- This term I enjoyed painting different things for Art.  
Rupkotha- This term I liked playing writing a creative letter.  
Leo- This term I have liked learning more about the main ideas reading.  
Amelia- This term I have enjoyed learning in maths.  
Sajjad- This term I enjoyed learning about 2D shapes for the walking excursion.  
Adrian- This term I enjoyed learning things while on the walking excursion.  
Gabriel- This term I have learnt my spelling words in my book.  
David- This term I enjoyed learning about acute, obtuse and right angles.  
Braxton- This term I enjoyed playing soccer for PSSA.  
Daellius- This term I enjoyed learning about angles for Maths.  
Alyssa- This term I enjoyed learning about angles for Maths.



# 4-6T CLASSROOM NEWS



## This term In 4-6T Science

In Science, 4-6T have been learning about the survival of living things. Students have been discovering the 4 necessities of human beings: air, water, shelter and food.

4-6T planned, drafted and built their own mini model of a natural shelter.



## Maths



4-6T enjoy working together as a class to solve whole number activities.

## Typing club



4-6T have been practising their typing skills on computers.



# PBL AT SCHOOL

Lansvale East Public School - Be Responsible Be Respectful Be Resilient

## PBL Focus Weeks 9 & 10 (Term 1, 2023)

Our PBL focus is 'Keeping hands and feet to yourself' and expected behaviour when at School and in proximity to other students and teachers.

Students will understand and demonstrate how to respect the personal space of others, and in particular, keeping hands and feet to themselves



## Our PBL lessons are based on data collected. Term 1, Weeks 7 & 8 (2023).

Morning	1	
Afternoon	1	1
Middle	1	
Recess	3	1
Lunch	1	3
Parent pick up	1	3

Most of the major incidents from K-6 have occurred during recess. Most of the minor incidents have occurred during lunch and parent pick up time.

Morning	9	5
Middle	16	4
Afternoon	4	1
Lunch	9	3
Recess	14	2
Before school	2	
Parent pick up	4	

Most of the major behaviours in the support unit have occurred in the middle session, followed by recess break. 9 incidents have occurred in the morning and at lunch. An equal number of incidents have been reported in the afternoon and during parent pick up.

# LEPS WELLBEING SCHOOL SUPPORT DOGS

VISITING CLASSROOMS

**Sade** loves to help the students in **Math groups**, very smart dog!!



**Lenny** just got on time for do some reading in **K-4P class!**



**Sade** supporting **K-4T class** with their daily work.



**Ziggy** in training wanted to say hello to **K-D class** and **5-6D class**.



Hello again **K-4T class**  
**Lenny** enjoys spend learning time with his friends.



**Lenny** was looking for his friends. He found them doing some sports





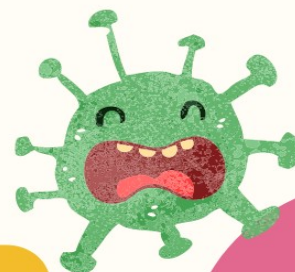
Dear Parents & Carers



It'll be runny nose season soon!

Cold and flu season are fast approaching!  
We go through many, many boxes  
of tissues in our classrooms.

If you can donate any boxes of tissues it would be  
greatly appreciated!.



**Thank you for helping us  
stay healthy!**





# SCHOOL HOLIDAY FUN

## FAMILY MOVIE TIME

Children and their families are invited to join us for movies on the big screen these school holidays.

Registration required.

### Whitlam Library Cabramatta

Friday 14 April 11.30am-1pm

Wednesday 19 April 11.30am-1pm



## BUNNINGS CRAFT FUN

Join us for a fun craft activity these school holidays courtesy of Bunnings Bonnyrigg, Smithfield and Villawood. Places will be held for 5 minutes after the scheduled start time.

For ages 5+.

Registration required.

### Bonnyrigg Library

Wednesday 12 April 10.30-11.30am

### Whitlam Library Cabramatta

Wednesday 12 April 10.30-11.30am

### Fairfield Library

Friday 14 April 10.30-11.30am

### Wetherill Park Library

Friday 14 April 10.30-11.30am

### Smithfield Community Library

Monday 17 April 10.30-11.30am



9725 0333  
[www.fairfieldcity.nsw.gov.au/library](http://www.fairfieldcity.nsw.gov.au/library)  
[libraryenquiries@fairfieldcity.nsw.gov.au](mailto:libraryenquiries@fairfieldcity.nsw.gov.au)

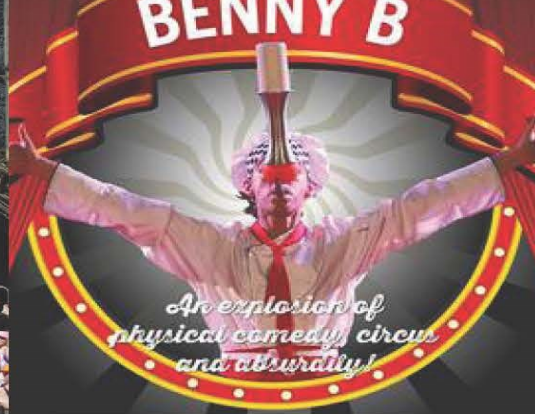
**FAIRFIELD CITY**  
OPEN LIBRARIES

**Lansvale East Public School**

21 Riverside Rd, Lansvale East NSW 2166

Phone: (02) 9728 1278 Email: [lansvalee-p.school@det.nsw.edu.au](mailto:lansvalee-p.school@det.nsw.edu.au)

Website: <http://www.lansvalee-p.schools.nsw.edu.au/>



## BENNY B- DER CHEF

This school holidays, comic circus performer Benny B will be serving up a feast of entertainment at Fairfield City Open Libraries. From traditional kitchen games to bizarre stunt recipes, be prepared to witness the heat from this explosive show that combines physical comedy circus and absurdism. With 'Kinder Schnitzel' on the menu, this is definitely a show for the whole family.

Registration required.

### Bonnyrigg Library

Tuesday 11 April 2-3pm

### Whitlam Library Cabramatta

Tuesday 11 April 10.30-11.30am

### Fairfield Library

Wednesday 19 April 2-3pm

### Wetherill Park Library

Wednesday 19 April 10.30-11.30am



## About Benny B

With over 10 years professional experience, Ben Bryant is one of Australia's most creative and innovative comic circus performers. His ability to connect with any audience, regardless of age or language, has seen him perform as a feature artist in 27 countries around the world. Benny B proves that comedy is in fact the true universal language.



9725 0333



[www.fairfieldcity.nsw.gov.au/library](http://www.fairfieldcity.nsw.gov.au/library)



[libraryenquiries@fairfieldcity.nsw.gov.au](mailto:libraryenquiries@fairfieldcity.nsw.gov.au)



**FAIRFIELD CITY**  
OPEN LIBRARIES

**Lansvale East Public School**

21 Riverside Rd, Lansvale East NSW 2166

Phone: (02) 9728 1278 Email: [lansvalee-p.school@det.nsw.edu.au](mailto:lansvalee-p.school@det.nsw.edu.au)

Website: <http://www.lansvalee-p.schools.nsw.edu.au/>



# READ ALOUD CORNER

Reading aloud is an engaging yet simple activity that can build life-long interest and success in reading.

Read Aloud Corner is a program that encourages children to practice the skills of storytelling by improving their comprehension, vocabulary, fluency and expression. Come along and get cosy in our corner as we read and discuss popular children's fiction and picture book titles together.

For ages 6-12 years.  
Registration required.

## **Whitlam Library Cabramatta**

Every Wednesday of the school term 4-5pm

## **Wetherill Park Library**

Every Thursday of the school term 4-5pm



@FCOpenLibraries

[www.fairfieldcity.nsw.gov.au/library](http://www.fairfieldcity.nsw.gov.au/library)



**Lansvale East Public School**

**21 Riverside Rd, Lansvale East NSW 2166**

**Phone:** (02) 9728 1278 **Email:** [lansvalee-p.school@det.nsw.edu.au](mailto:lansvalee-p.school@det.nsw.edu.au)

**Website:** <http://www.lansvalee-p.schools.nsw.edu.au/>



**Please note:** Traditional or Composite group and the presentation format are chosen by your school. Sibling photos, if available, can also be ordered online and must be ordered prior to your photo day. A late fee will apply for photos purchased after ordering has closed.

## how to order

### order online

Online payment options include Visa, Mastercard and PayPal. Alternatively, you can choose to pay over 10 weeks using LatitudePay.

#### STEP 1

Go to [www.advancedlife.com.au](http://www.advancedlife.com.au) on your computer, phone or tablet.

#### STEP 2

Enter your school code:

**WXB 5JD 8V7**

in the 'order and download' box. This will take you to your school's secure online ordering site.



#### STEP 3

Click on 'Order Photos' and complete your details and procedures. During this process you can place orders for additional children at your school and sibling photos, if available.



### cash/envelope ordering

Your school prefers orders to be placed online. However, if you are unable to order online, please complete your order using the order envelope provided.

#### STEP 1

Complete a separate order envelope for each individual child's package/s ordered. If ordering for more than one child, payment should be enclosed in the envelope of the eldest child and this should be indicated on the envelope of the other child/children (the envelope that does not have cash enclosed).

#### STEP 2

Enclose exact cash payment in one envelope for the package/s you are ordering. Payment for more than one child should be in the eldest child's envelope and marked at the bottom of the envelope in the space provided.

#### STEP 3

Return your completed envelope/s, with correct cash payment, to our photographers on the day.

**Please note:** You must enclose exact correct payment, as change is not available. Credit card payments can only be made online and we no longer accept cheques. There is a separate envelope for sibling photo orders, should your school choose to offer sibling photos.

**School photographs will be returned to your school 4-6 weeks after the day of photography**

#### IMPORTANT - "not for publication" students

If you have instructed your school that your child's image is "not for publication" (sometimes called "do not publish" or "not for media release" instructions), the school will ensure that your child is not presented to our photographers on photo day and school photographs will not be available for purchase. If you wish to change your instruction, then you must notify your school, so they change their records and identify your child as able to be photographed for school photography purposes. All students presented to our photographers by your school on photo day will be photographed, their images will appear in school photography packages with their fellow students and these packages will be available.

Contact us: [www.advancedlife.com.au/contact](http://www.advancedlife.com.au/contact)

**advancedlife**  
school photography & print specialists



Thursday 16 March 2023

## **Easter Hat Parade and Family Picnic** **2023**

Dear Parents and Carers,

On **Tuesday 28 March 2023**, Lansvale East Public School will be having an Easter Hat Parade to celebrate the closing of a successful term and to showcase the wonderful hats they have made at school or at home. All parents and families are invited to come and celebrate with our students, see their amazing work and stay for a family picnic lunch. Families will be able to purchase a sausage sizzle on the day for **\$2.50**.

Parents and families are to enter via Riverside Rd gate and sign in at the front office.

Children are able to come in mufti clothes for the day; however, they must wear appropriate sun safe clothing including footwear (enclosed shoes) and a hat. **No slogans are allowed on the clothing items.**

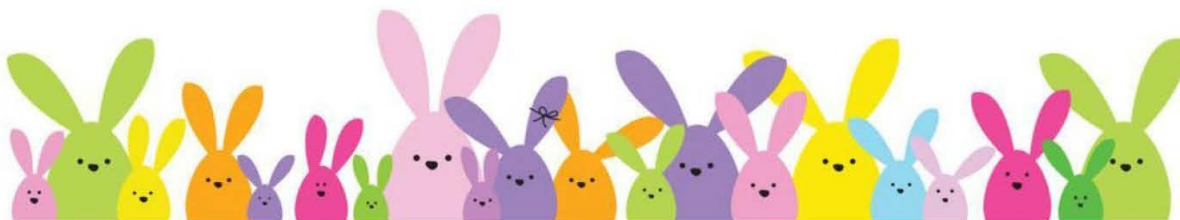
### **Day Schedule**

<b>9:30 – 10:30am</b>	<b>Easter Hat Parade</b> – students showcase their creative hats under the cola.
<b>10:30 – 11:00am</b>	<b>Open Classrooms</b> – families invited into their child's classroom to see the different things they have been learning about.
<b>11:00 – 11:40am</b>	<b>Family Picnic</b> – bring along a blanket and food to sit and spend time altogether. <b><u>No food is to be shared with children that are not their own in case of allergies.</u></b>

***After the family picnic, parents and carers are to leave school grounds via Riverside Rd and students will return to their classrooms and participate in fun Easter activities.***

Miss Droulias, Mrs Kingsnorth, Mrs Pinto,  
Miss Odgers, Ms Talaia, Ms Angeleski  
Event organisers

Ms E.Ortega  
Principal



LANSVALE EAST PUBLIC SCHOOL  
RIVERSIDE ROAD LANSVALE NSW 2166  
TEL: 9728 1278 FAX: 9728 2339  
EMAIL: [lansvalee-p.school@det.nsw.edu.au](mailto:lansvalee-p.school@det.nsw.edu.au) WEB: [www.lansvalee-p.school@det.nsw.edu.au](http://www.lansvalee-p.school@det.nsw.edu.au)



Thursday 23 March 2023

## **PBL Green Event – Colour Run/ Crazy Hair Day**

Dear Parents and Caregivers,

Positive Behaviour for Learning (PBL) provides students and staff at Lansvale East Public School with a set of rules - 'Be Responsible', 'Be Respectful' and 'Be Resilient', which underpin a positive and proactive system for defining, teaching and supporting appropriate student behaviours. PBL develops a positive, safe and supportive school climate which maximises student learning and growth.

The PBL Team have organised a Green Event – Colour Run on **Thursday 6 April 2023** for students who have been following the PBL school rules and expectations in Term 1. ***Students who have received 5 or more reflections per term for the same behaviour will not be able to attend the green event.*** Students will participate in a Colour Run Race. Students participating in the fun run can purchase coloured powder for \$1 per cup.

In addition, Lansvale East Public School will be having a Crazy Hair Day to fundraise for the Year 6 end of year farewell dinner. Students are encouraged to come to school with crazy hair and bring a gold coin donation. Snow cones will also be available to purchase during lunch and recess breaks for \$2.50.

<b>Location/Time:</b>	onsite, Lansvale East Public School - 1:00pm - 2:00pm
<b>What to wear:</b>	green mufti (students must wear closed shoes)
<b>What to bring:</b>	a change of clothes, shoes, underwear and socks in a bag labelled to be changed into after the event
<b>Cost:</b>	\$1 per colour cup (Fun Run) Gold coin donation (Crazy Hair Day Fundraiser) \$2.50 (snow cones)

### **Questions:**

***Is the powder safe?***

Yes, the powder is toxic free and made out of organic corn-starch.

***Can I wash the powder off from the clothes?***

In most cases the powders will be completely gone after one wash; however, it is recommended not to wear your best clothes for this event.

**Please return this form by Monday 3 April 2023 to the classroom teacher.**

PBL Committee

Ms E. Ortega  
Principal

&< \_\_\_\_\_

## **PBL Green Event – Colour Run/ Crazy Hair Day**

I give permission for my child \_\_\_\_\_ of class \_\_\_\_\_ to participate in the PBL Green Event – Colour Run.

\_\_\_\_\_  
Parent/Carer (print name)

\_\_\_\_\_  
Parent/Carer (Signature)

\_\_\_\_\_  
Date

**PERMISSION NOTE MUST BE RETURNED BY MONDAY 3 APRIL 2023 TO THE CLASSROOM TEACHER.**

LANSVALE EAST PUBLIC SCHOOL  
RIVERSIDE ROAD LANSVALE NSW 2166  
TEL: 9728 1278 FAX: 9728 2339

EMAIL: [lansvalee-p.school@det.nsw.edu.au](mailto:lansvalee-p.school@det.nsw.edu.au) WEB: [www.lansvalee-p.school@det.nsw.edu.au](http://www.lansvalee-p.school@det.nsw.edu.au)

# Why attendance matters

When your child misses school they miss important opportunities to:



Learn



Make friends



Build skills through fun



## Days missed = years lost

A day here and there doesn't seem like much, but...

When your child misses just...

they miss weeks per year

and years over their school life

**1** day per **fortnight**  
 = **4** weeks  = Over **1** year missed

**1** day per **week**  
 = **8** weeks  = Over **2.5** years missed

education.nsw.gov.au



Lansvale East Public School

21 Riverside Rd, Lansvale East NSW 2166

Phone: (02) 9728 1278 Email: [lansvalee-p.school@det.nsw.edu.au](mailto:lansvalee-p.school@det.nsw.edu.au)

Website: <http://www.lansvalee-p.schools.nsw.edu.au/>

# School Community Charter

 **Collaborative. Respectful. Communication.**

The following School Community Charter outlines the responsibilities of parents, carers, educators and school staff in NSW public schools to ensure our learning environments are collaborative, supportive and cohesive.

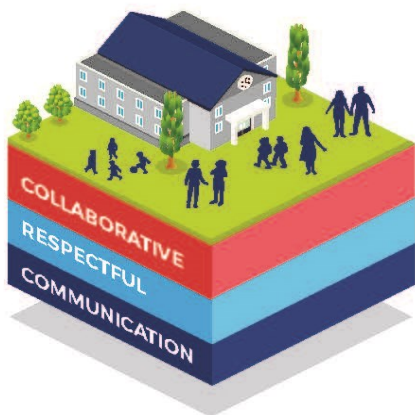
We treat  
each other  
with  
**respect**

## What our schools provide

NSW public schools work to create positive environments for students, staff and the entire school community that support student learning. We strive to ensure that every student is known, valued and cared for.

The best education happens when parents and schools work together.

The School Community Charter aligns with the NSW Department of Education Strategic Plan 2018 – 2022.



## Positive environments

It is important that our NSW public schools are positive environments and that parents and carers are kept informed of students' progress and school announcements.

Parents and carers can expect:

- To be welcomed into our schools to work in partnership to promote student learning.
- Communication from school staff will be timely, polite and informative.
- Professional relationships with school staff are based on transparency, honesty and mutual respect.
- To be treated fairly. Tolerance and understanding are promoted as we respect diversity.

We  
**prioritise**  
the wellbeing  
of all students  
and staff

**Unsafe  
behaviour**  
is not acceptable  
in our schools

We work  
**together**  
with the  
school

**Ensuring respectful learning environments for all members of NSW Public Schools communities.**

© NSW Department of Education



We create  
**collaborative**  
learning  
environments

We  
all play  
**our part**

We work  
**in partnership**  
to promote  
student  
learning

## Communicating with our schools

Our staff will find a time to talk to you when they can give you their full attention. Please remember that while our staff are in class or dealing with other matters, they may not be available to answer your questions immediately.

Our schools and communities will make sure that written communication is appropriate, fair and easy to read. We encourage you to use email and social media appropriately to connect with your school and stay up-to-date with up-coming events in the school community.

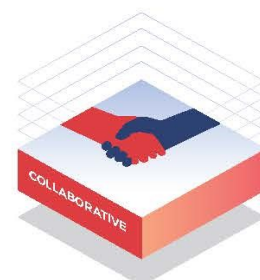
Our guide for parents, carers and students provides useful information about the complaints process:

[education.nsw.gov.au/about-us/rights-and-accountability/complaints-compliments-and-suggestions/guide-for-parents-carers-and-students](http://education.nsw.gov.au/about-us/rights-and-accountability/complaints-compliments-and-suggestions/guide-for-parents-carers-and-students)

## Respectful communication is a right

In all workplaces people have the right to feel respected. Unacceptable and offensive behaviour has no place in our school communities.

To ensure the wellbeing of students, staff and the community in our schools, steps will be taken to address unacceptable behaviour. This may include restricting contact with the school community or, in more serious cases, referral to NSW Police.



### Unacceptable behaviour may include but is not limited to:

- Aggressive or intimidating actions, such as violence, threatening gestures or physical proximity.
- Aggressive or intimidating language, including the use of obscenities, making sexist, racist or derogatory comments or using a rude tone.
- Treating members of the school community differently due to aspects such as their religion or disability.
- Inappropriate and time wasting communication.



**Collaborative.**  
**Respectful.**  
**Communication.**

School Community Charter

[education.nsw.gov.au](http://education.nsw.gov.au)

**Lansvale East Public School**

**21 Riverside Rd, Lansvale East NSW 2166**

**Phone:** (02) 9728 1278 **Email:** [lansvalee-p.school@det.nsw.edu.au](mailto:lansvalee-p.school@det.nsw.edu.au)

**Website:** <http://www.lansvalee-p.schools.nsw.edu.au/>



## UNIFORM ORDER FORM

Please indicate below the size and quantity of the items required and calculate the total.

Payments can be made by any of the following methods:

- Parent Online Payment (POP instructions on the back of this form)
- Correct cash in an envelope

Please send your completed order form to school with your child, alternatively please e-mail the form to

[Lansvalee-p.school@det.nsw.edu.au](mailto:Lansvalee-p.school@det.nsw.edu.au)

ITEM	COST	SIZE	QUANTITY	TOTAL
		4 6 8 10 12 14 16 M L		
School Dress	\$45:00			
Skort	\$20:00			
Short Sleeve Polo	\$25:00			
Long Sleeve Polo	\$30:00			
Shorts (Boys)	\$20:00			
Jacket	\$30:00			
Sports Shorts	\$20:00			
Sports Shirt	\$25:00			
Tracksuit	\$70:00			
Tracksuit Jacket	\$40:00			
Tracksuit Pants	\$30:00			
Hat/Cap	\$20:00			
Excursion Bag	\$15:00			
School Bag	\$35:00			
Library Bag	\$25:00			
			<b>TOTAL</b>	<b>\$</b>

Child's Name \_\_\_\_\_ Class \_\_\_\_\_ Date \_\_\_\_\_

Parent/Carer Name \_\_\_\_\_ Signature \_\_\_\_\_ Phone \_\_\_\_\_

Payment Method ☐ POP Payment ☐ Cash ☐ Credit Card

Visa ☐ Mastercard ☐ Card Number \_\_\_\_\_ / \_\_\_\_\_ / \_\_\_\_\_ / \_\_\_\_\_

Expiry \_\_\_\_\_ / \_\_\_\_\_ CCV \_\_\_\_\_

LANSVALE EAST PUBLIC SCHOOL  
RIVERSIDE ROAD LANSVALE NSW 2166  
TEL: 9728 1278 FAX: 9728 2339  
EMAIL: [lansvalee-p.school@det.nsw.edu.au](mailto:lansvalee-p.school@det.nsw.edu.au) WEB: [www.lansvalee-p.school@det.nsw.edu.au](http://www.lansvalee-p.school@det.nsw.edu.au)

**Lansvale East Public School**

**21 Riverside Rd, Lansvale East NSW 2166**

**Phone: (02) 9728 1278 Email: [lansvalee-p.school@det.nsw.edu.au](mailto:lansvalee-p.school@det.nsw.edu.au)**

**Website: <http://www.lansvalee-p.school@det.nsw.edu.au>**



## PARENT ONLINE PAYMENTS

Using Westpac QuickWeb

Dear Parents,

Online payments are accessed through the home page of the school's website:

[www.lansvalee-p.school@det.nsw.edu.au](http://www.lansvalee-p.school@det.nsw.edu.au)

The school website will have an option on the menu bar "Make a Payment".

When you click on this you will be taken straight to the Westpac QuickWeb page.

Payers will complete the necessary details, some of which are mandatory before confirming the payment details and completing the payment. A receipt can be printed from the payment page.

The payment screens are:

- Entering payment details
- Entering credit card details
- Confirmation of payment details and
- Online payment receipt

Payments can be made by Visa or MasterCard credit or debit card only. The school does not see any details of your card.

Please ensure you enter the child's correct name, class and details of what you are paying for. These details are necessary so that the payment is credited to the correct child.

All payments made before 6.00pm each day will be received at the school the next day. Payment after 6.00pm will not be received by the school for two days.

LANSVALE EAST PUBLIC SCHOOL  
RIVERSIDE ROAD LANSVALE NSW 2166  
TEL: 9728 1278 FAX: 9728 2339  
EMAIL: [lansvalee-p.school@det.nsw.edu.au](mailto:lansvalee-p.school@det.nsw.edu.au) WEB: [www.lansvalee-p.school@det.nsw.edu.au](http://www.lansvalee-p.school@det.nsw.edu.au)

**Lansvale East Public School**

**21 Riverside Rd, Lansvale East NSW 2166**

**Phone:** (02) 9728 1278 **Email:** [lansvalee-p.school@det.nsw.edu.au](mailto:lansvalee-p.school@det.nsw.edu.au)

**Website:** <http://www.lansvalee-p.schools.nsw.edu.au/>