

- ♦ From the Principal's desk
- ♦ Notes sent home

Upcoming events

**Gymnastics
Program**

Commences

Friday 28 April

SRE

Commences

Friday 5 May

**Mother's Day
Stall**

Thursday 11 May

Friday 12 May

**School Photo
Day**

**Wednesday
17 May**

LEPS Community News



Dear Parents and Carers,

Welcome back to term 2. It is wonderful to have our students back at school. I trust everyone has had a restful break and ready for an exciting term ahead.

There are lots of events happening this term and we ask our families to please pay attention to the notes that go home on a Thursday and also added to the school newsletters each fortnight for reminders. If you require any additional notes please contact the front office for this to be organised. We are also sending notes via emails, please contact the office if you need to update your email address.

Mother's Day Stall

Our Mother's Day stall will be held on Thursday the 11 May and Friday the 12 May. If there are any parent or carer volunteers would you please contact the office and let us know if you can assist with one hour or two between 9-11 am on Thursday or Friday.

School Photo Day

Our School Photo Day is on Wednesday, **17 May 2023**, if you would like to order school photos please return the photo envelope by Tuesday, 16 May 2023. **All envelopes must be sealed** with the correct money inside, **no change will be given**. Only the School Photographer will open the sealed photo envelopes. Alternatively, please follow the instructions on the envelope to order and pay online. School photos purchased online DO NOT require envelopes returned to school.

To ensure the photo day runs smoothly we encourage **ALL STUDENTS** to wear **the correct summer uniform**.

Boys – blue shirt, blue short and black shoes

Girls – blue shirt and blue skort OR summer dress with black shoes

If you have any questions please contact the front office.

A Mother's and Carer's breakfast is being organised by our staff for Thursday 11 May at 8:30 am in the hall. We hope to see you there.



Thursday, 27 April 2023

FitSchoolFitKids Gymnastics Program

Dear Parents and Caregivers,

In Term 2, we will be running the very successful gymnastics program run by qualified instructors from FitSchoolFitKids.

The Gymnastics lessons will run for 40 minutes each week over nine weeks, **commencing in Term 2 on Friday, 28 April and will conclude on Friday, 23 June.** The lessons will introduce and develop proficiency in a number of gymnastic skills, such as flexibility, strength, spatial awareness and balance.

The cost for students to participate in this program is **\$25.00**. This can be paid at the front office or via online payment.

These lessons are part of the Physical Education, Health and Personal Development syllabus and all children are expected to participate. Students will need to wear their full school sports uniform when participating in each session.

Please return this form with payment by Friday 19 May 2023.

If you require any further information, please contact the school office on 9728 1278.

Miss A Droulias
Sports Coordinator

Ms E Ortega
Principal

✂.....

FitSchoolFitKids Gymnastics Program

I give permission for my child _____ of class _____ to participate in the FitSchoolFitKids Gymnastics Programs.

☐ I have enclosed \$25.00 to cover the cost of the FitSchoolFitKids program.

☐ I have made an online payment. Online Payment Receipt no.: _____

Medical conditions/ Asthma Conditions:

Parent/Carer (print name)

Parent/Carer (Signature)

Date

PERMISSION NOTE MUST BE RETURNED TO CLASS TEACHERS BY FRIDAY 19 MAY 2023.

LANSVALE EAST PUBLIC SCHOOL
RIVERSIDE ROAD LANSVALE NSW 2166
TEL: 9728 1278 FAX: 9728 2339
EMAIL: lansvalee-p.school@det.nsw.edu.au WEB: www.lansvalee-p.school@det.nsw.edu.au



Thursday, 27 April 2023

SCHOOL PHOTO DAY – Wednesday, 17 May 2023

Our School Photo Day is on Wednesday, **17 May 2023**, if you would like to order school photos please return the photo envelope by Tuesday, 16 May 2023. **All envelopes must be sealed** with the correct money inside, **no change will be given**. Only the School Photographer will open the sealed photo envelopes. Alternatively, please follow the instructions on the envelope to order and pay online. School photos purchased online DO NOT require envelopes returned to school.

To ensure the photo day runs smoothly we encourage **ALL STUDENTS** to wear **the correct summer uniform**.

Boys – blue shirt, blue, short and black shoes

Girls – blue shirt and blue skirt OR summer dress with black shoes

Students that **are not purchasing photos** are **still required** to have their photo taken as a part of the class photo, unless Permission to Publish has not been received or the student does not have Permission to Publish.

Family photo envelopes will be available to collect from the school office.

Please don't hesitate to contact the school office on 9728 1278 if you have any questions.

Regards

Ms E. Ortega
Principal

LANSVALE EAST PUBLIC SCHOOL
RIVERSIDE ROAD LANSVALE NSW 2166
TEL: 9728 1278 FAX: 9728 2339
EMAIL: lansvalee-p.school@det.nsw.edu.au WEB: www.lansvalee-p.school@det.nsw.edu.au



Office Use Only	
ERN Update	
Date	

MEDICAL AND CONTACT DETAILS UPDATE

Thursday, 27 April 2023

It is important that we update all our student enrolment information and medical records. This ensures we have the most up-to-date details when caring for your child's health and relevant contact information in the event we need to contact parents and families.

Therefore, we ask that you fill in the following information and return it to the office **as soon as possible**.

Student Name:		Class:	
Parent/Carer 1		Parent/Carer 2	
Mobile/Work		Mobile/Work	
Street Address:			
Suburb:		Post Code	
Student's Medicare number		Number on card	
EMERGENCY CONTACTS			
Name (1):		Name (2):	
Phone		Phone:	

As an Asthma Friendly School, we annually update our asthma records and medication. Students who are diagnosed asthmatics are required to **supply medication which is in date** and an **up to date Asthma Plan** from their doctor.

Students with known allergies are also required to supply an **up to date ASCIA Action Plan** and **Epi-Pen** if required. Please be aware that there are updated ASCIA Action Plans for 2023, again, these documents are to be completed by your family doctor.

If your child has recently been diagnosed with a medical condition that we should be aware of, please provide details for us below including your child's condition and any care required;

Schools work with parents/carers, staff and students to provide effective support to students with asthma. Parents/carers need to inform the school if their child has asthma.

Students with asthma need ready access to their reliever medication when an attack occurs, the school must know the students who carry their own asthma reliever medication with them while at school and on all school related excursions. Parents/carers must complete a written request for the student to carry their own asthma reliever medication. A response letter will be provided to parents from the Principal confirming arrangements for the student and the information included in the student's health care plan if required.

Should you have any further queries or require any further information please do not hesitate to contact the office on 9727 1278.

Yours sincerely

Ms. E Ortega
Principal

LANSVALE EAST PUBLIC SCHOOL
RIVERSIDE ROAD LANSVALE NSW 2166
TEL: 9728 1278 FAX: 9728 2339

EMAIL: lansvalee-p.school@det.nsw.edu.au WEB: www.lansvalee-p.school@det.nsw.edu.au



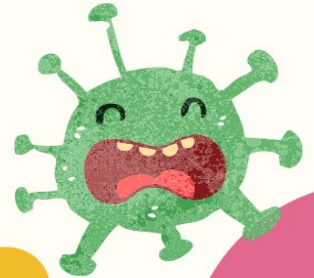
Dear Parents & Carers



It'll be runny nose season soon!

Cold and flu season are fast approaching!
We go through many, many boxes
of tissues in our classrooms.

If you can donate any boxes of tissues it would be
greatly appreciated!.



**Thank you for helping us
stay healthy!**



Why attendance matters

When your child misses school they miss important opportunities to:



Learn



Make friends



Build skills through fun

Days missed = years lost

A day here and there doesn't seem like much, but...

When your child misses just...

they miss weeks per year

and years over their school life

1 day per **fortnight**
 = **4** weeks  = Over **1** year missed

1 day per **week**
 = **8** weeks  = Over **2.5** years missed

education.nsw.gov.au



Lansvale East Public School

21 Riverside Rd, Lansvale East NSW 2166

Phone: (02) 9728 1278 Email: lansvalee-p.school@det.nsw.edu.au

Website: <http://www.lansvalee-p.schools.nsw.edu.au/>

School Community Charter

 **Collaborative. Respectful. Communication.**

The following School Community Charter outlines the responsibilities of parents, carers, educators and school staff in NSW public schools to ensure our learning environments are collaborative, supportive and cohesive.

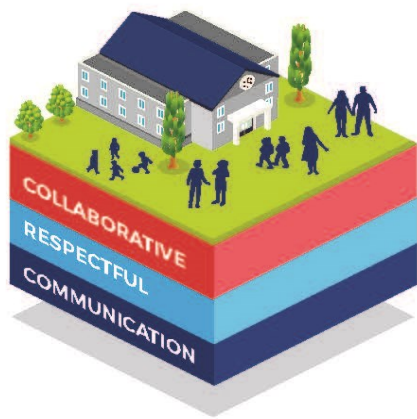
We treat
each other
with
respect

What our schools provide

NSW public schools work to create positive environments for students, staff and the entire school community that support student learning. We strive to ensure that every student is known, valued and cared for.

The best education happens when parents and schools work together.

The School Community Charter aligns with the NSW Department of Education Strategic Plan 2018 – 2022.



Positive environments

It is important that our NSW public schools are positive environments and that parents and carers are kept informed of students' progress and school announcements.

Parents and carers can expect:

- To be welcomed into our schools to work in partnership to promote student learning.
- Communication from school staff will be timely, polite and informative.
- Professional relationships with school staff are based on transparency, honesty and mutual respect.
- To be treated fairly. Tolerance and understanding are promoted as we respect diversity.

We
prioritise
the wellbeing
of all students
and staff

**Unsafe
behaviour**
is not acceptable
in our schools

We work
together
with the
school

Ensuring respectful learning environments for all members of NSW Public Schools communities.

© NSW Department of Education



We create
collaborative
learning
environments

We
all play
our part

We work
in partnership
to promote
student
learning

Communicating with our schools

Our staff will find a time to talk to you when they can give you their full attention. Please remember that while our staff are in class or dealing with other matters, they may not be available to answer your questions immediately.

Our schools and communities will make sure that written communication is appropriate, fair and easy to read. We encourage you to use email and social media appropriately to connect with your school and stay up-to-date with up-coming events in the school community.

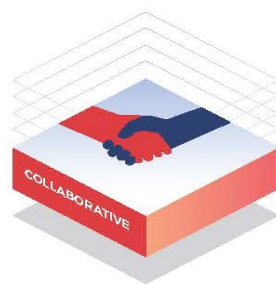
Our guide for parents, carers and students provides useful information about the complaints process:

education.nsw.gov.au/about-us/rights-and-accountability/complaints-compliments-and-suggestions/guide-for-parents-carers-and-students

Respectful communication is a right

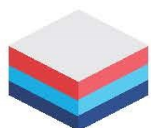
In all workplaces people have the right to feel respected. Unacceptable and offensive behaviour has no place in our school communities.

To ensure the wellbeing of students, staff and the community in our schools, steps will be taken to address unacceptable behaviour. This may include restricting contact with the school community or, in more serious cases, referral to NSW Police.



Unacceptable behaviour may include but is not limited to:

- Aggressive or intimidating actions, such as violence, threatening gestures or physical proximity.
- Aggressive or intimidating language, including the use of obscenities, making sexist, racist or derogatory comments or using a rude tone.
- Treating members of the school community differently due to aspects such as their religion or disability.
- Inappropriate and time wasting communication.



Collaborative.
Respectful.
Communication.

School Community Charter

education.nsw.gov.au



UNIFORM ORDER FORM

Please indicate below the size and quantity of the items required and calculate the total.

Payments can be made by any of the following methods:

- Parent Online Payment (POP instructions on the back of this form)
- Correct cash in an envelope

Please send your completed order form to school with your child, alternatively please e-mail the form to

Lansvalee-p.school@det.nsw.edu.au

ITEM	COST	SIZE	QUANTITY	TOTAL
		4 6 8 10 12 14 16 M L		
School Dress	\$45:00			
Skort	\$20:00			
Short Sleeve Polo	\$25:00			
Long Sleeve Polo	\$30:00			
Shorts (Boys)	\$20:00			
Jacket	\$30:00			
Sports Shorts	\$20:00			
Sports Shirt	\$25:00			
Tracksuit	\$70:00			
Tracksuit Jacket	\$40:00			
Tracksuit Pants	\$30:00			
Hat/Cap	\$20:00			
Excursion Bag	\$15:00			
School Bag	\$35:00			
Library Bag	\$25:00			
			TOTAL	\$

Child's Name _____ Class _____ Date _____

Parent/Carer Name _____ Signature _____ Phone _____

Payment Method ☐ POP Payment ☐ Cash ☐ Credit Card

Visa ☐ Mastercard ☐ Card Number _____ / _____ / _____ / _____

Expiry _____ / _____ CCV _____

LANSVALE EAST PUBLIC SCHOOL
RIVERSIDE ROAD LANSVALE NSW 2166
TEL: 9728 1278 FAX: 9728 2339
EMAIL: lansvalee-p.school@det.nsw.edu.au WEB: www.lansvalee-p.school@det.nsw.edu.au



PARENT ONLINE PAYMENTS

Using Westpac QuickWeb

Dear Parents,

Online payments are accessed through the home page of the school's website:

www.lansvalee-p.school@det.nsw.edu.au

The school website will have an option on the menu bar "Make a Payment".

When you click on this you will be taken straight to the Westpac QuickWeb page.

Payers will complete the necessary details, some of which are mandatory before confirming the payment details and completing the payment. A receipt can be printed from the payment page.

The payment screens are:

- Entering payment details
- Entering credit card details
- Confirmation of payment details and
- Online payment receipt

Payments can be made by Visa or MasterCard credit or debit card only. The school does not see any details of your card.

Please ensure you enter the child's correct name, class and details of what you are paying for. These details are necessary so that the payment is credited to the correct child.

All payments made before 6.00pm each day will be received at the school the next day. Payment after 6.00pm will not be received by the school for two days.

LANSVALE EAST PUBLIC SCHOOL
RIVERSIDE ROAD LANSVALE NSW 2166
TEL: 9728 1278 FAX: 9728 2339
EMAIL: lansvalee-p.school@det.nsw.edu.au WEB: www.lansvalee-p.school@det.nsw.edu.au