

- ♦ From the Principal's desk
- ♦ K-4T News
- ♦ 1-2D News
- ♦ PBL News
- ♦ Wellbeing Support Dogs
- ♦ Community News
- ♦ Notes sent home

### Upcoming events

**School Photo  
Day  
Wednesday  
17 May**

**National Walk  
Safely to School  
Day  
Friday 19 May**

**Outdoor  
Classroom Day  
Friday  
19 May**



Dear Parents and Carers,

Thank you to all our wonderful Mothers and Carers that do so much for our students and their families each and every day. We want to wish you a Wonderful Mother's Day and that you celebrate it with lots of love and happiness.

#### BEING COVID-SMART – TERM 2

Our COVID-smart measures continue to be in place to help reduce the risk of transmission for students and staff members and are vital in allowing us to keep our schools operational while prioritising student and staff wellbeing. These measures include:

- Staying home if unwell.
- Test for COVID-19 if showing any symptoms.
- Strongly encouraging masks to be worn by all students, staff and visitors, particularly when indoors, and if exposed to COVID-19.
- Maintaining natural ventilation with windows and doors open whenever possible, including when cooling/heating systems are in use.

#### ROAD SAFETY

It is important we all remember the safe road safety practices. Avoid leaving home late. To do this try to aim to get up ten minutes earlier. Everybody needs to be at a destination and our students need to arrive to school safe and happy each day. Plan your morning routine as a family and discuss the importance of being organised and ready to leave at the same time every morning to reduce the stress on everyone. This will ensure the drop off is a safe one for everyone. Please remember that drivers cannot drive into someone's driveway: park their vehicle to drop off or pick up and reverse out again – **this is a \$481 fine and 4 points off your licence.**

#### School information

Please call the front office if you have any questions. We are here to assist as much as possible.  
Stay Safe.



# K-4T NEWS



Students have been partaking in the FitSchoolFitKids Gymnastics Program. Every Friday students are introduced to a number of gymnastic skills, such as flexibility, strength, spatial awareness and balance.

K-4T has been looking at two-dimensional shapes for maths. Understanding 2D shapes is important because it helps us recognise and describe the shapes we see around us, and it helps us with math and other subjects.





# This term in 1-2D...



## Buddies with 5N

This term with our buddies, we are focusing on developing our reading skills. 5N have been modelling how to read fluently and have given 1-2D feedback to become more confident with our reading.

## Writing

We have started our new Writing unit this term – informative writing. Students have been writing about what they know about Australian animals, such as Koalas and Kangaroos. We can't wait to learn more interesting facts about different animals!





# PBL NEWS

Lansvale East Public School - Be Responsible Be Respectful Be Resilient

## PBL Focus Weeks 1 & 2 (Term 2, 2023)

Our PBL focus is  
Classroom Rules.

Students will understand  
and demonstrate  
expected behaviour within  
the classroom.

## PBL Focus Weeks 3 & 4 (Term 2, 2023)

Our PBL focus is  
Classroom and Playground  
rules.

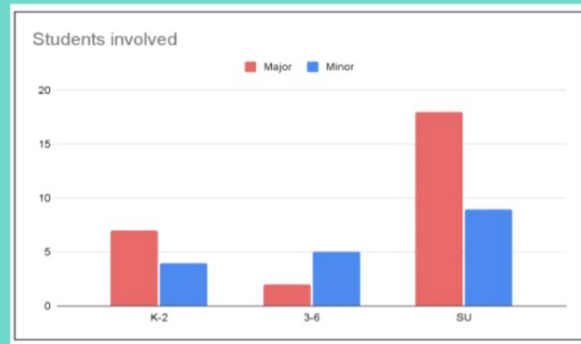
Students will understand  
and demonstrate expected  
behaviour in the classroom  
and in the playground.

Special emphasis on  
keeping your hands and  
feet to yourself and using  
nice words.



We are Responsible in  
the playground and  
wear our hat.

Our PBL lessons are based on  
data collected.  
Term 2, Weeks 1 & 2 (2023).



Most of the major incidents in K-6 are  
in the classroom followed by the main  
grass area.

Most of the minor incidents have  
occurred under the COLA.





# LEPS WELLBEING SCHOOL SUPPORT DOGS

## VISITING CLASSROOMS

**Ziggy** in training was visiting **K-D class** and he started to bond with his new friends.



**Lenny** loves to spend time helping Muqtada from **3-T class** with his daily work.

**Sade** supporting **Numeracy groups** with their work.



Nothing better than start the day reading with **Sade** in **4-6T Class**.



**Lenny** in **4-6N Class** listens carefully when **AJ** reads for him.





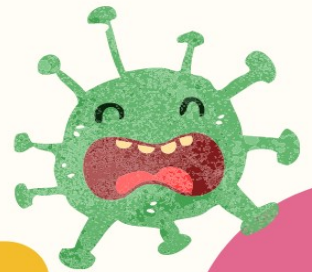
Dear Parents & Carers



It'll be runny nose season soon!

Cold and flu season are fast approaching!  
We go through many, many boxes  
of tissues in our classrooms.

If you can donate any boxes of tissues it would be  
greatly appreciated!.



Thank you for helping us  
stay healthy!







# Happy Mother's Day

Dear mothers, The staff of Lansvale East Public Pchool wish you a very Happy Mother's Day, We hope you enjoy this special and beautiful day, We all appreciate the great work you do with your families.

Thank you.  
LEPS Staff.







## Mother's Day Stall



**Lansvale East Public School**

**21 Riverside Rd, Lansvale East NSW 2166**

Phone: (02) 9728 1278 Email: [lansvalee-p.school@det.nsw.edu.au](mailto:lansvalee-p.school@det.nsw.edu.au)

Website: <http://www.lansvalee-p.schools.nsw.edu.au/>





## K-2 Field of Mars Excursion

Dear Parent/Caregiver,

Thursday 11<sup>th</sup> May 2023

**Please note: This excursion was postponed from last year. Families who have paid for this excursion in 2022 have remained on the paid list and will not need to return the consent form with payment.**

In Term 1, students from K-2 have been learning the Geography unit: *Features of Places*. To support students' understanding of the unit, we will be going on an excursion where students will participate in a bush walk through mangrove and eucalypt forests along the Buffalo Creek Reserve, in Hunters Hill.

During the excursion, students will use a variety of hands-on fieldwork tools to acquire sensory and immersive experiences such as invertebrate hunts, exploring the mangrove forest, crab hunting (tide permitting) and creating a memory map of their day's journey using natural materials.

**When:** Friday, 9<sup>th</sup> June 2023

**What to wear:** Full school sports uniform with school hat and closed, comfortable walking shoes.

**What to bring:** Small backpack with school hat, water bottle, lunch and recess. Please ensure your child's name is on his/her bag.

**Please do not bring money as we will not be making any purchases.**

**Cost:** \$30

**Departure:** Students need to **arrive at school no later than 8:30am** for an 8:45am departure.

**Return:** Approximately 3:00pm

*Staff members with emergency care and CPR training will be accompanying students. A risk assessment for this activity has been undertaken and all necessary actions have been approved by the Principal. **Students who are of concern because of recent unsafe behaviours at school, may be excluded from this excursion. Parents will be notified if staff are considering excluding any particular student from attending this excursion.***

Miss J. Dinh & Miss S. Thai  
Excursion Organisers/Classroom Teachers

Ms E.Ortega  
Principal



----- Please detach and **return to the classroom teacher by Monday 5th June 2023** -----



### Consent Form Field of Mars Excursion

I consent for my child \_\_\_\_\_ (Student name) from Class \_\_\_\_\_ to attend the **Field of Mars Excursion at Buffalo Creek Reserve on Friday 9<sup>th</sup> June 2023.**

I have included payment in cash: \$  Payment online receipt number: \_\_\_\_\_

My child has the following additional needs (Please specify):

\_\_\_\_\_

Parent / Caregiver Name: \_\_\_\_\_ (PLEASE PRINT)

Parent / Caregiver Mobile No.: \_\_\_\_\_

Parent / Caregiver Signature: \_\_\_\_\_ Date: \_\_\_\_\_

**PERMISSION NOTE MUST BE RETURNED TO CLASSROOM TEACHER BY MONDAY 5TH JUNE 2023**

LANSVALE EAST PUBLIC SCHOOL  
RIVERSIDE ROAD LANSVALE NSW 2166  
TEL: 9728 1278 FAX: 9728 2339  
EMAIL: [lansvalee-p.school@det.nsw.edu.au](mailto:lansvalee-p.school@det.nsw.edu.au) WEB: [www.lansvalee-p.school@det.nsw.edu.au](http://www.lansvalee-p.school@det.nsw.edu.au)



## Gandangara Local Aboriginal Land Council – In School Visit

11 May 2023

Dear Parent/Caregiver,

The 3-6 students have been given the amazing opportunity to experience an Aboriginal Historic Workshop, at Lansvale East Public School. On **Wednesday, 7 June 2023**, students will participate in a range of engaging educational activities including viewing cultural artwork and handling historic artifacts linking to Creative Arts and History outcomes they are learning this Term.

**When:** 7 June 2023

**Where:** The event will be at hosted on school grounds.

**What to wear:** Full school uniform.

**Cost:** \$15.00

The cost covers the cost from Gandangara Local Aboriginal Land Council and the teaching & learning resources used on the day.

**Staff members with emergency care and CPR training are accompanying the students. A risk assessment of this activity has been undertaken and all necessary actions have been approved by the Principal. Students who are of concern because of recent, unsafe behaviours at school, may be excluded from this excursion. Parents will be notified if staff are considering excluding any particular student from attending.**

Mr. S Ngo & Ms N Tran  
Classroom Teachers

Ms E. Ortega  
Principal

----- Please detach -----



### **Gandangara Local Aboriginal Land Council – In School Visit 2023**

I consent for my child \_\_\_\_\_ (Student name) from Class \_\_\_\_\_ to attend the Aboriginal Historic Workshop on the 7<sup>th</sup> of June, 2023.

My child has the following additional needs (Please specify):

---

---

---

Parent / Caregiver Signature: \_\_\_\_\_ Date: \_\_\_\_\_

**PERMISSION NOTE MUST BE RETURNED BY WEDNESDAY 31 MAY 2023 TO THE CLASSROOM TEACHER.**

LANSVALE EAST PUBLIC SCHOOL  
RIVERSIDE ROAD LANSVALE NSW 2166  
TEL: 9728 1278 FAX: 9728 2339

EMAIL: [lansvalee-p.school@det.nsw.edu.au](mailto:lansvalee-p.school@det.nsw.edu.au) WEB: [www.lansvalee-p.school@det.nsw.edu.au](http://www.lansvalee-p.school@det.nsw.edu.au)





Dear Parents/Caregivers,

Parent/Teacher/Student interviews will be held on Tuesday 27 June 2023 or Wednesday 28 June 2023 between 3:30pm and 6:30pm.

Interviews are strictly 15 minutes and spaces are limited. If you require more time with a particular teacher, please arrange a separate meeting by telephoning the school on 9728 1278

Go to [www.schoolinterviews.com.au](http://www.schoolinterviews.com.au) and enter the code **7cbhv**



Enter your details



Select the teachers you wish to see



Select the appointment times that suit your family best



When you click FINISH your selected bookings will be emailed to you immediately. If you do not receive your email, please check your junk-mail, or enter the event code again and check your email address spelling.

Update your details if the email address is incorrect.

DO NOT DELETE the email you receive. Keep it somewhere safe. You may need to refer back to it at a later date.

REMEMBER TO ADD YOUR APPOINTMENTS TO YOUR CALENDAR - reminders will not be sent home.

**Bookings must be finalised by Monday 26 June 2023 at 4pm**

If you need to view, cancel, change or print your bookings:

- Click on the link in the confirmation email you received after you made your bookings  
OR return to [www.schoolinterviews.com.au](http://www.schoolinterviews.com.au) and enter the code and the email address you used when making your bookings.

Ms. E Ortega  
Principal

LANSVALE EAST PUBLIC SCHOOL  
RIVERSIDE ROAD LANSVALE NSW 2166  
TEL: 9728 1278 FAX: 9728 2339  
EMAIL: [lansvalee-p.school@det.nsw.edu.au](mailto:lansvalee-p.school@det.nsw.edu.au) WEB: [www.lansvalee-p.school@det.nsw.edu.au](http://www.lansvalee-p.school@det.nsw.edu.au)

# Why attendance matters

When your child misses school they miss important opportunities to:



Learn



Make friends



Build skills through fun



## Days missed = years lost

A day here and there doesn't seem like much, but...

When your child misses just...

they miss weeks per year

and years over their school life

**1** day per **fortnight**  
M ~~W~~ T F  
M T W T F  
= **4** weeks  = Over **1** year missed

**1** day per **week**  
M ~~W~~ T F  
M T W ~~F~~  
= **8** weeks  = Over **2.5** years missed

education.nsw.gov.au



Lansvale East Public School

21 Riverside Rd, Lansvale East NSW 2166

Phone: (02) 9728 1278 Email: [lansvalee-p.school@det.nsw.edu.au](mailto:lansvalee-p.school@det.nsw.edu.au)

Website: <http://www.lansvalee-p.schools.nsw.edu.au/>



# School Community Charter

 **Collaborative. Respectful. Communication.**

The following School Community Charter outlines the responsibilities of parents, carers, educators and school staff in NSW public schools to ensure our learning environments are collaborative, supportive and cohesive.

## What our schools provide

NSW public schools work to create positive environments for students, staff and the entire school community that support student learning. We strive to ensure that every student is known, valued and cared for.

**The best education happens when parents and schools work together.**

The School Community Charter aligns with the NSW Department of Education Strategic Plan 2018 – 2022.



## Positive environments

It is important that our NSW public schools are positive environments and that parents and carers are kept informed of students' progress and school announcements.

Parents and carers can expect:

- To be welcomed into our schools to work in partnership to promote student learning.
- Communication from school staff will be timely, polite and informative.
- Professional relationships with school staff are based on transparency, honesty and mutual respect.
- To be treated fairly. Tolerance and understanding are promoted as we respect diversity.

We treat each other with **respect**

We **prioritise** the wellbeing of all students and staff

**Unsafe behaviour** is not acceptable in our schools

We work **together** with the school

**Ensuring respectful learning environments for all members of NSW Public Schools communities.**

© NSW Department of Education



We create  
**collaborative**  
learning  
environments

We  
all play  
**our part**

We work  
**in partnership**  
to promote  
student  
learning

## Communicating with our schools

Our staff will find a time to talk to you when they can give you their full attention. Please remember that while our staff are in class or dealing with other matters, they may not be available to answer your questions immediately.

Our schools and communities will make sure that written communication is appropriate, fair and easy to read. We encourage you to use email and social media appropriately to connect with your school and stay up-to-date with up-coming events in the school community.

Our guide for parents, carers and students provides useful information about the complaints process:

[education.nsw.gov.au/about-us/rights-and-accountability/complaints-compliments-and-suggestions/guide-for-parents-carers-and-students](http://education.nsw.gov.au/about-us/rights-and-accountability/complaints-compliments-and-suggestions/guide-for-parents-carers-and-students)

## Respectful communication is a right

In all workplaces people have the right to feel respected. Unacceptable and offensive behaviour has no place in our school communities.

To ensure the wellbeing of students, staff and the community in our schools, steps will be taken to address unacceptable behaviour. This may include restricting contact with the school community or, in more serious cases, referral to NSW Police.



### Unacceptable behaviour may include but is not limited to:

- Aggressive or intimidating actions, such as violence, threatening gestures or physical proximity.
- Aggressive or intimidating language, including the use of obscenities, making sexist, racist or derogatory comments or using a rude tone.
- Treating members of the school community differently due to aspects such as their religion or disability.
- Inappropriate and time wasting communication.



**Collaborative.  
Respectful.  
Communication.**

## School Community Charter

[education.nsw.gov.au](http://education.nsw.gov.au)





## UNIFORM ORDER FORM

Please indicate below the size and quantity of the items required and calculate the total.

Payments can be made by any of the following methods:

- Parent Online Payment (POP instructions on the back of this form)
- Correct cash in an envelope

Please send your completed order form to school with your child, alternatively please e-mail the form to

[Lansvalee-p.school@det.nsw.edu.au](mailto:Lansvalee-p.school@det.nsw.edu.au)

ITEM	COST	SIZE	QUANTITY	TOTAL
		4 6 8 10 12 14 16 M L		
School Dress	\$45:00			
Skort	\$20:00			
Short Sleeve Polo	\$25:00			
Long Sleeve Polo	\$30:00			
Shorts (Boys)	\$20:00			
Jacket	\$30:00			
Sports Shorts	\$20:00			
Sports Shirt	\$25:00			
Tracksuit	\$70:00			
Tracksuit Jacket	\$40:00			
Tracksuit Pants	\$30:00			
Hat/Cap	\$20:00			
Excursion Bag	\$15:00			
School Bag	\$35:00			
Library Bag	\$25:00			
			<b>TOTAL</b>	<b>\$</b>

Child's Name \_\_\_\_\_ Class \_\_\_\_\_ Date \_\_\_\_\_

Parent/Carer Name \_\_\_\_\_ Signature \_\_\_\_\_ Phone \_\_\_\_\_

Payment Method ☐ POP Payment ☐ Cash ☐ Credit Card

Visa ☐ Mastercard ☐ Card Number \_\_\_\_\_ / \_\_\_\_\_ / \_\_\_\_\_ / \_\_\_\_\_

Expiry \_\_\_\_\_ / \_\_\_\_\_ CCV \_\_\_\_\_

LANSVALE EAST PUBLIC SCHOOL  
RIVERSIDE ROAD LANSVALE NSW 2166  
TEL: 9728 1278 FAX: 9728 2339  
EMAIL: [lansvalee-p.school@det.nsw.edu.au](mailto:lansvalee-p.school@det.nsw.edu.au) WEB: [www.lansvalee-p.school@det.nsw.edu.au](http://www.lansvalee-p.school@det.nsw.edu.au)



## PARENT ONLINE PAYMENTS

Using Westpac QuickWeb

Dear Parents,

Online payments are accessed through the home page of the school's website:

[www.lansvalee-p.school@det.nsw.edu.au](http://www.lansvalee-p.school@det.nsw.edu.au)

The school website will have an option on the menu bar "Make a Payment".

When you click on this you will be taken straight to the Westpac QuickWeb page.

Payers will complete the necessary details, some of which are mandatory before confirming the payment details and completing the payment. A receipt can be printed from the payment page.

The payment screens are:

- Entering payment details
- Entering credit card details
- Confirmation of payment details and
- Online payment receipt

Payments can be made by Visa or MasterCard credit or debit card only. The school does not see any details of your card.

Please ensure you enter the child's correct name, class and details of what you are paying for. These details are necessary so that the payment is credited to the correct child.

All payments made before 6.00pm each day will be received at the school the next day. Payment after 6.00pm will not be received by the school for two days.

LANSVALE EAST PUBLIC SCHOOL  
RIVERSIDE ROAD LANSVALE NSW 2166  
TEL: 9728 1278 FAX: 9728 2339  
EMAIL: [lansvalee-p.school@det.nsw.edu.au](mailto:lansvalee-p.school@det.nsw.edu.au) WEB: [www.lansvalee-p.school@det.nsw.edu.au](http://www.lansvalee-p.school@det.nsw.edu.au)