

- ◆ From the Principal's desk
- ◆ K-4 P News
- ◆ 4 E News
- ◆ 4-6 A News
- ◆ PBL News
- ◆ Notes sent home
- ◆ Community News
- ◆ Uniform price list
- ◆ Dates to remember...

**Tuesday 27 June
&
Wednesday 28
June**

Parent/Teacher
Interview - from
3:30 pm—6:30pm

**Thursday
29 June**

Assembly &
Eid Celebration.
Morning tea in the
hall from 8:30 am
for parents/ carers.

**Thursday
29 June**

PBL Green Event
Amazing Race

**Friday
30 June**

Term 2 ends

23 June 2023 Week 9



Dear Parents and Carers,

We continue to remind our families that if your child is sick to please keep your child at home.

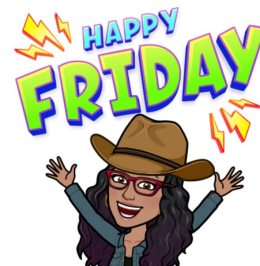
Lansvale East Public School has been advised that members of the school community have recently tested positive to COVID-19.

Students in Years 1 to 4 and staff who worked with this group of students may have had contact with a person who was infectious with COVID-19.

While testing and isolation is no longer mandatory for being exposed to someone with COVID-19 in school settings, NSW Health have provided advice on testing guidelines for our school communities following exposure to COVID-19 that should be considered when making decisions for your child and family if this situation arises at your school.

You are reminded that students and staff should not attend school if they are showing any symptoms of COVID-19 or other respiratory illnesses. These include fever, cough, sore throat, shortness of breath, runny nose, loss of smell/taste, muscle/joint pains, diarrhoea, nausea/vomiting, extreme tiredness, unexplained chest pain or conjunctivitis (eye infection).

If symptoms occur at any time, your child should not attend school and is encouraged to undertake a rapid antigen test. If your child tests positive, they should not attend school while displaying any symptoms. Students attending school are strongly encouraged to wear masks following a positive test or if they have been exposed to COVID-19. You are encouraged to register any positive test on the Service NSW or Service NSW app so that you can be linked to important health care support and advice and inform your school of the positive test result. Parents and carers are reminded to please ensure that you select your school's name when prompted when registering a positive test for your child. We thank you for your support.



Lansvale East Public School

21 Riverside Rd, Lansvale East NSW 2166

Phone: (02) 9728 1278 **Email:** lansvalee-p.school@det.nsw.edu.au

Website: <http://www.lansvalee-p.schools.nsw.edu.au/>

Parent and Carer Interviews

Please do not forget to book your interview time with your teacher online.

Go to www.schoolinterviews.com.au

and enter the code **7cbhv**

Enter your details.

Select the teachers you wish to see.

Select the appointment times that suit your family best.

When you click FINISH your selected bookings will be emailed to you immediately. If you do not receive your email, please check your junk-mail, or enter the event code again and check your email address spelling. Update your details if the email address is incorrect.

DO NOT DELETE the email you receive. Keep it somewhere safe. You may need to refer back to it at a later date.

REMEMBER TO ADD YOUR APPOINTMENTS TO YOUR CALENDAR - reminders will not be sent home.

Bookings must be finalised by Monday 26 June 2023 at 4pm

If you need to view, cancel, change or print your bookings:

Click on the link in the confirmation email you received after you made your bookings OR return to www.schoolinterviews.com.au and enter the code and the email address you used when making your bookings.

If you need any assistance please call the front office on 9728 1278.

COVID-SMART MEASURES UPDATE

Our COVID-smart measures continue to be in place to help reduce the risk of transmission for students and staff members and are vital in allowing us to keep our schools operational while prioritising student and staff wellbeing.

These measures include:

- Staying home if unwell and test for COVID-19 if showing any symptoms
 - Strongly encouraging masks to be worn by all students, staff and visitors, particularly when indoors, and if exposed to COVID-19
 - Maintaining natural ventilation with windows and doors open whenever possible, including when cooling/heating systems are in use
- Continuing to provide RATs and other hygiene products to schools free of charge.

Stay safe everyone.



K-4P's Success



In K-4 P, students are engaging in fun, interactive and hands-on learning activities. Students have explored a different phoneme and grapheme each week. All our key learning areas have been linked to the focus phoneme or grapheme.

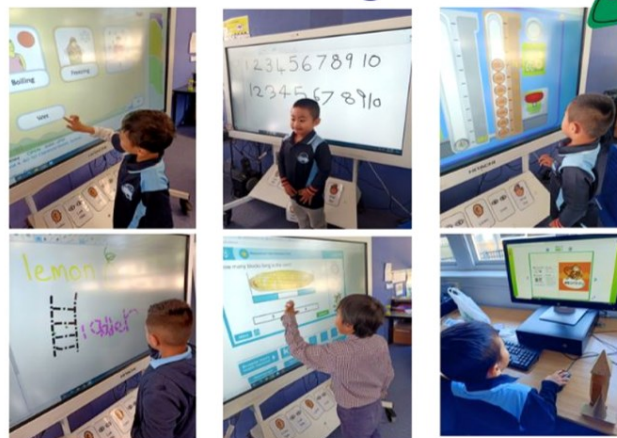
Riding scooters



Let's get creative!



Fun during ICT



Enjoying Gymnastics



4 E

This term we have been learning about types of angles, how identifying them in the classroom and how to draw them.

We have also been learning about perimeter, area and volume.



ANGLES



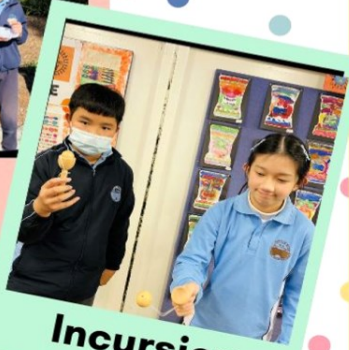
Some of the ways we learn in Mathematics!

4-6A

Amazing Achievements



Incursion



Incursion



Gymnastics



Science



Computers



Group Reading

Our Learning

This term in 4-6A we have explored many new concepts. In writing we have explored ways to stay engaged in and enjoy writing. In Mathematics, we continue to explore 2D and 3D shapes whilst also exploring the length of various objects.

Integration

4-6A have enjoyed integrating with 4E for our Assembly item, CAPA and Library. 4-6A look forward to integrating for both music and gymnastics as we get to learn and develop our social skills.



PBL NEWS

Lansvale East Public School - Be Responsible Be Respectful Be Resilient

Based on data collected the
PBL Focus for
Weeks 9 & 10 (Term 2, 2023) is:

Following rules and expectations during
transitions' with emphasis on listening to teacher
instructions and keeping your hands and feet to
yourself. Teachers to also reinforce looking
after school property.



4E are ready to listen
to their teacher and
start their learning
for the day.
We are Respectful.

In the morning and after each outdoor
transition 1-2D line up outside their
classroom. We are Responsible.



Handball under the COLA. We are
Resilient as we follow the rules of the
game and take turns.



Thursday 15 June 2023

2023 NAIDOC Week celebration

Dear Parents and Caregivers,

Lansvale East Public School will be celebrating NAIDOC week on Wednesday, 19th July 2023. Students have been given an amazing opportunity to participate in the Koori Konnection's workshop. Students will be participating in a range of activities such as: Bushfood cooking, Traditional art (face painting), dance and games.

When: 19th July 2023

Cost: \$0.00

Staff members with emergency care and CPR training are accompanying the students. A risk assessment of this activity has been undertaken and all necessary actions have been approved by the Principal. Students who are of concern because of recent, unsafe behaviours at school, may be excluded from this excursion. Parents will be notified if staff are considering excluding any particular student from attending.

Miss N. Tran and Ms M. Agostini
Aboriginal Education Committee

Ms E. Ortega
Principal

&< _____

2023 NAIDOC Week celebration

I consent for my child _____ (Student name) from Class _____ to participate in the following activities:

Bush Tucker cooking / eating	Yes / No
Traditional Face Painting	Yes / No

If your child has any allergies, please update your child's records in the office.

Parent/Carer (print name)

Parent/Carer (Signature)

Date

IF YOUR CHILD DOES NOT HAVE ASTHMA OR A MEDICAL CONDITION YOU DO NOT NEED TO BRING THE PERMISSION NOTE

LANSVALE EAST PUBLIC SCHOOL
RIVERSIDE ROAD LANSVALE NSW 2166
TEL: 9728 1278 FAX: 9728 2339
EMAIL: lansvalee-p.school@det.nsw.edu.au WEB: www.lansvalee-p.school@det.nsw.edu.au



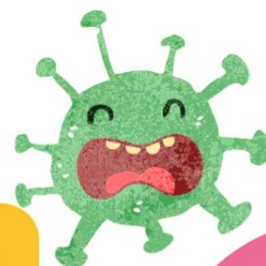
Dear Parents & Carers

It is cold and flu season!



We go through many, many boxes of tissues in our classrooms.

If you can donate any boxes of tissues it would be greatly appreciated!.



**Thank you for helping us
stay healthy!**



Why attendance matters

When your child misses school they miss important opportunities to:



Learn



Make friends



Build skills through fun



Days missed = years lost

A day here and there doesn't seem like much, but...

When your child misses just...

they miss weeks per year

and years over their school life

1 day per **fortnight**
 = **4** weeks  = Over **1** year missed

1 day per **week**
 = **8** weeks  = Over **2.5** years missed

education.nsw.gov.au



Lansvale East Public School

21 Riverside Rd, Lansvale East NSW 2166

Phone: (02) 9728 1278 Email: lansvalee-p.school@det.nsw.edu.au

Website: <http://www.lansvalee-p.schools.nsw.edu.au/>

School Community Charter

 **Collaborative. Respectful. Communication.**

The following School Community Charter outlines the responsibilities of parents, carers, educators and school staff in NSW public schools to ensure our learning environments are collaborative, supportive and cohesive.

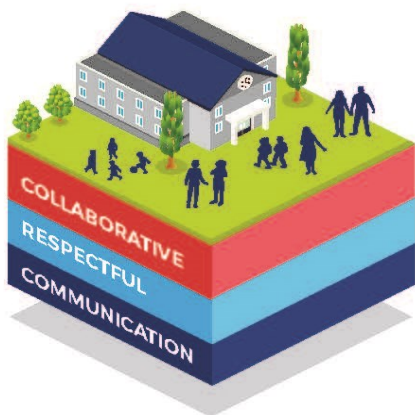
We treat
each other
with
respect

What our schools provide

NSW public schools work to create positive environments for students, staff and the entire school community that support student learning. We strive to ensure that every student is known, valued and cared for.

The best education happens when parents and schools work together.

The School Community Charter aligns with the NSW Department of Education Strategic Plan 2018 – 2022.



Positive environments

It is important that our NSW public schools are positive environments and that parents and carers are kept informed of students' progress and school announcements.

Parents and carers can expect:

- To be welcomed into our schools to work in partnership to promote student learning.
- Communication from school staff will be timely, polite and informative.
- Professional relationships with school staff are based on transparency, honesty and mutual respect.
- To be treated fairly. Tolerance and understanding are promoted as we respect diversity.

We
prioritise
the wellbeing
of all students
and staff

**Unsafe
behaviour**
is not acceptable
in our schools

We work
together
with the
school

Ensuring respectful learning environments for all members of NSW Public Schools communities.

© NSW Department of Education



We create
collaborative
learning
environments

We
all play
our part

We work
in partnership
to promote
student
learning

Communicating with our schools

Our staff will find a time to talk to you when they can give you their full attention. Please remember that while our staff are in class or dealing with other matters, they may not be available to answer your questions immediately.

Our schools and communities will make sure that written communication is appropriate, fair and easy to read. We encourage you to use email and social media appropriately to connect with your school and stay up-to-date with up-coming events in the school community.

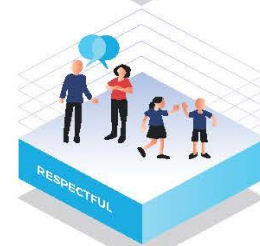
Our guide for parents, carers and students provides useful information about the complaints process:

education.nsw.gov.au/about-us/rights-and-accountability/complaints-compliments-and-suggestions/guide-for-parents-carers-and-students

Respectful communication is a right

In all workplaces people have the right to feel respected. Unacceptable and offensive behaviour has no place in our school communities.

To ensure the wellbeing of students, staff and the community in our schools, steps will be taken to address unacceptable behaviour. This may include restricting contact with the school community or, in more serious cases, referral to NSW Police.



Unacceptable behaviour may include but is not limited to:

- Aggressive or intimidating actions, such as violence, threatening gestures or physical proximity.
- Aggressive or intimidating language, including the use of obscenities, making sexist, racist or derogatory comments or using a rude tone.
- Treating members of the school community differently due to aspects such as their religion or disability.
- Inappropriate and time wasting communication.



Collaborative.
Respectful.
Communication.

School Community Charter

education.nsw.gov.au



UNIFORM ORDER FORM

Please indicate below the size and quantity of the items required and calculate the total.

Payments can be made by any of the following methods:

- Parent Online Payment (POP instructions on the back of this form)
- Correct cash in an envelope

Please send your completed order form to school with your child, alternatively please e-mail the form to

Lansvalee-p.school@det.nsw.edu.au

ITEM	COST	SIZE	QUANTITY	TOTAL
		4 6 8 10 12 14 16 M L		
School Dress	\$45:00			
Skort	\$20:00			
Short Sleeve Polo	\$25:00			
Long Sleeve Polo	\$30:00			
Shorts (Boys)	\$20:00			
Jacket	\$30:00			
Sports Shorts	\$20:00			
Sports Shirt	\$25:00			
Tracksuit	\$70:00			
Tracksuit Jacket	\$40:00			
Tracksuit Pants	\$30:00			
Hat/Cap	\$20:00			
Excursion Bag	\$15:00			
School Bag	\$35:00			
Library Bag	\$25:00			
			TOTAL	\$

Child's Name _____ Class _____ Date _____

Parent/Carer Name _____ Signature _____ Phone _____

Payment Method ☐ POP Payment ☐ Cash ☐ Credit Card

Visa ☐ Mastercard ☐ Card Number _____ / _____ / _____ / _____

Expiry _____ / _____ CCV _____

LANSVALE EAST PUBLIC SCHOOL
RIVERSIDE ROAD LANSVALE NSW 2166
TEL: 9728 1278 FAX: 9728 2339
EMAIL: lansvalee-p.school@det.nsw.edu.au WEB: www.lansvalee-p.school@det.nsw.edu.au

Lansvale East Public School

21 Riverside Rd, Lansvale East NSW 2166

Phone: (02) 9728 1278 Email: lansvalee-p.school@det.nsw.edu.au

Website: <http://www.lansvalee-p.schools.nsw.edu.au/>



PARENT ONLINE PAYMENTS

Using Westpac QuickWeb

Dear Parents,

Online payments are accessed through the home page of the school's website:

www.lansvalee-p.school@det.nsw.edu.au

The school website will have an option on the menu bar "Make a Payment".

When you click on this you will be taken straight to the Westpac QuickWeb page.

Payers will complete the necessary details, some of which are mandatory before confirming the payment details and completing the payment. A receipt can be printed from the payment page.

The payment screens are:

- Entering payment details
- Entering credit card details
- Confirmation of payment details and
- Online payment receipt

Payments can be made by Visa or MasterCard credit or debit card only. The school does not see any details of your card.

Please ensure you enter the child's correct name, class and details of what you are paying for. These details are necessary so that the payment is credited to the correct child.

All payments made before 6.00pm each day will be received at the school the next day. Payment after 6.00pm will not be received by the school for two days.

LANSVALE EAST PUBLIC SCHOOL
RIVERSIDE ROAD LANSVALE NSW 2166
TEL: 9728 1278 FAX: 9728 2339
EMAIL: lansvalee-p.school@det.nsw.edu.au WEB: www.lansvalee-p.school@det.nsw.edu.au